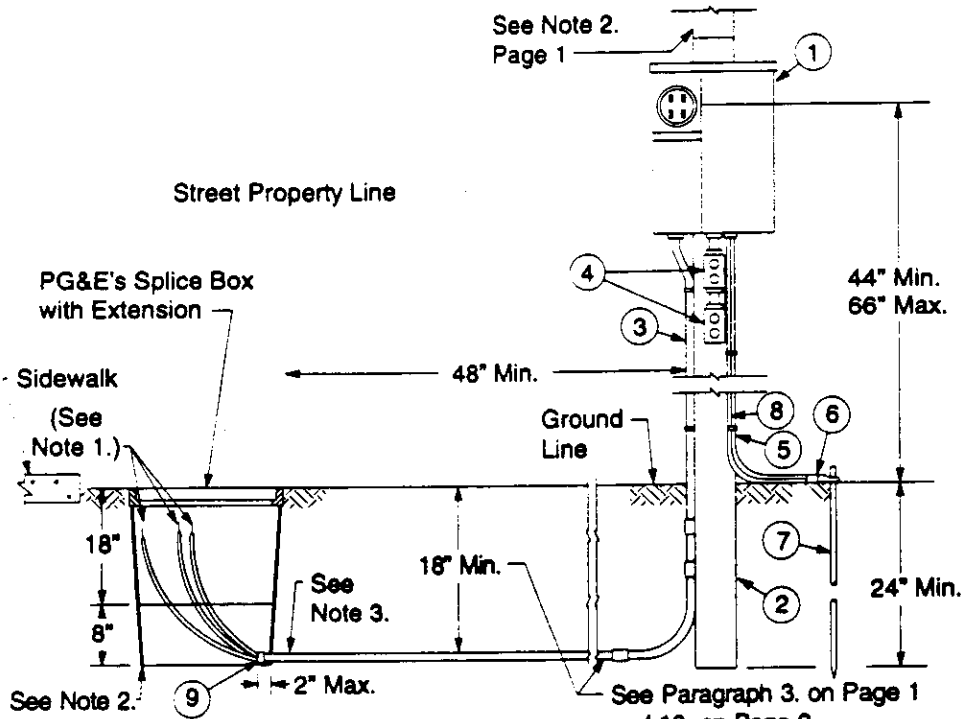




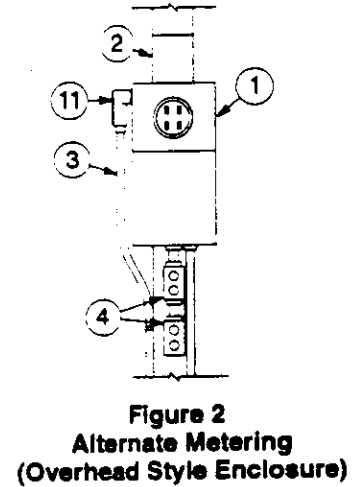
Service Post Installation

Notes:

1. The customer's cables will be connected by PG&E. Customer is to contact PG&E when he is ready to extend conduit and cable into the splice box. Only PG&E personnel are allowed to insert cables into the splice box. Customer's cables are to extend a minimum of 24" into the splice box.
2. PG&E secondary splice box is normally located adjacent to the sidewalk. Consult PG&E for exact location. If a splice box is not present PG&E will install an appropriate splice box at the customer's expense.
3. Conduit is to enter splice box through knockout positions only.



**Figure 1
Service Post Metering
Preferred Installation**



**Figure 2
Alternate Metering
(Overhead Style Enclosure)**

Table 1 Materials to be Furnished and Installed by the Customer

Item	Description
1	Service termination enclosure, combination meter socket panel
2	Post, minimum dimension 4" x 6" x 7'-0" long (see Paragraph 7.B. on Page 1)
3	Conduit, rigid steel, galv., or Schedule 80 PVC 1-1/2" minimum I.D. for #2 or 1/0 aluminum service cable
4	Weatherproof outlets
5	Conduit, rigid steel, galv., with pipe strap (for bare ground wire, omit if armor clad wire used)
6	Hub and clamp, grounding, to suit Item 5
7	Ground Rod (see Paragraph 9., Page 1)
8	Ground wire, copper, bare or armor clad (size in accordance with applicable electrical codes and local requirements)
9	Conduit bushing or bell end as required
10	Service termination enclosure, 8" x 12" x 4", rain-tight, circle AW No. R-9007A or equivalent (see Note 2., Page 4)
11	Conduit fitting, threaded with cover and gasket, size to suit Item 3