

# Agenda

## Potential Mid-Peninsula High Speed Train Station Redwood City

- Open House 7:00 – 7:30
- Presentation 7:30 – 8:00
- Questions/Community input 8:00 – 9:00
- Adjourn

# Community Workshop 2

## Potential Mid-Peninsula High Speed Train Station Redwood City

Peninsula Rail Program  
November 3, 2010



# Agenda

## Workshop 2 Focus

*Presentation, Q & A and community input on the opportunities and impacts a potential HST station in downtown Redwood City*

## Agenda

- Recap 1<sup>st</sup> Workshop on October 28
- Presentation
  - Benefits, program, ridership & downtown “footprint”
- Questions/Answers
- Community Feedback

# Recap October 13 Workshop

## Focus

*Present and answer questions on the potential opportunities and impacts of a Mid-Peninsula HST Station in Redwood City*

## Agenda

- Benefits
- Location Considerations
- Station Program
- Preliminary "Footprint"
- Questions and Answers

# Recap October 13 Workshop

## Questions/Answers

1. Redwood City is a potential HST station city
2. HST stations can attract shopping downtown
3. Obstacles to cross platform transfers, but under study
4. ROW property/noise impacts in Dec. Draft EIR
5. Below grade alternative is under consideration
6. Market pays to build structured parking with City support
7. Initial train schedule 5–7 at peak hour 6:00am–10:00pm
8. Aerial stations can have at grade cross ROW connectivity

## Potential Benefits of a HST Station to Redwood City

- Statewide accessibility
- Identity/destination
- Attracts investment/enhances real estate value
- Supports transit accessibility and multi-modal connectivity

# HST Station Design

## Station Access

- Multi-Modal & Urban

## Parking

- Market Rate Parking
- 3,000 spaces in 3 miles

## Station Services 67,000 SF

- Passenger Service
- Baggage and Security
- Mezzanine Concourse
- Station Operations

## Platforms

- up to 16 cars
- Length 1,410 feet



*Rimini, Italy*

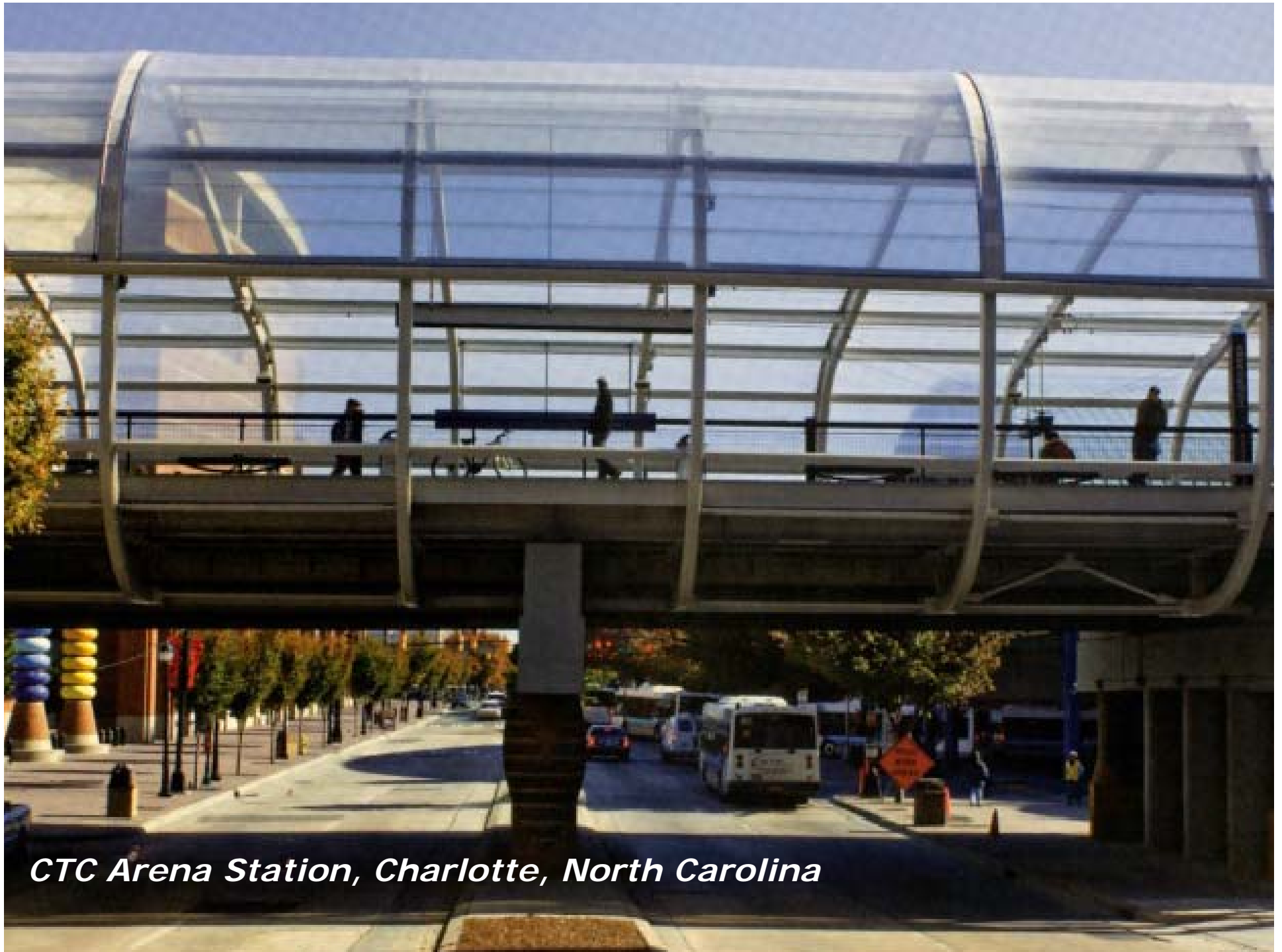
November 3, 2010

# Station Examples

- See real world examples
- Scale & function
- Not a proposed design
- European, Asian and United States

*Beatrixkwartier,  
Netherlands*





*CTC Arena Station, Charlotte, North Carolina*

*Rotenburg, Germany*





*Rotherham  
South Yorkshire,  
United Kingdom*

*Hsinchu Station,  
Taiwan*





*Frankfurt, Germany*

# Year 2035 HST Station Access

Mode	Persons Departing	Persons Arriving	Daily Vehicle Trips
28% Auto Drop Off	2,200	2,200	4,400
31% Auto Park	2,400	2,400	2,400
9% Rental Car	720	720	800
9% Taxi	680	680	800
10% Transit/ Shuttle	800	800	40
13% Walk / Bike	1,000	1,000	0
<b>Totals</b>	<b>7,800</b>	<b>7,800</b>	<b>8,440</b>

**2035 Traffic Increase**  
750 AM and PM peak hour vehicle trips

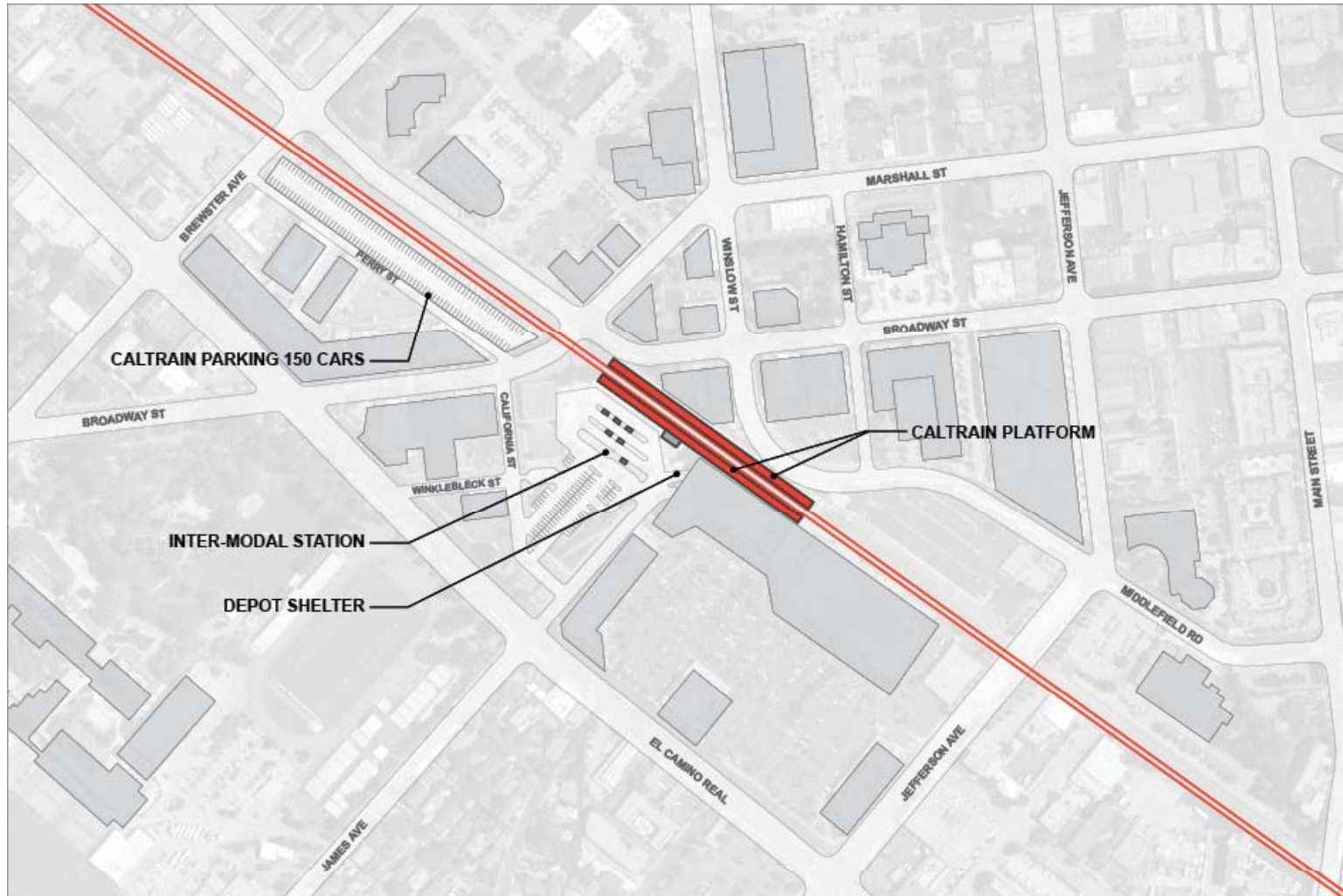
## Station Access Peak Hour

Mode	Vehicles at Peak Hour	Queue Space
Drop/off and Pick/up	187 cars	15 spaces
Taxi	64 cars	5 spaces

# Preliminary Station Footprint Concepts

- Superimpose program on site
  - Building, parking, platforms
- Not a design
- Conservative EIR assumptions
- With and without a HST station

# EXISTING ALIGNMENT



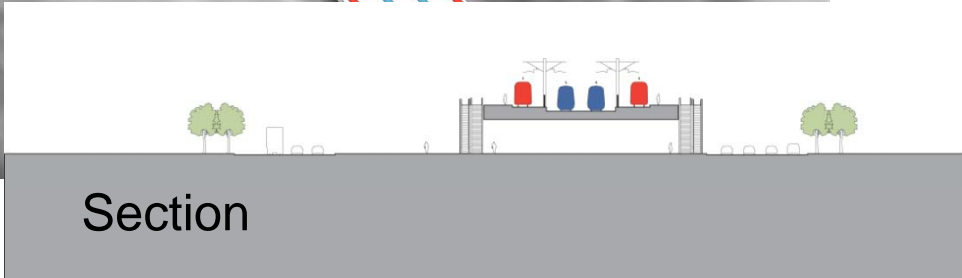
# EXISTING CALTRAIN STATION

*Aerial View over Google Map*



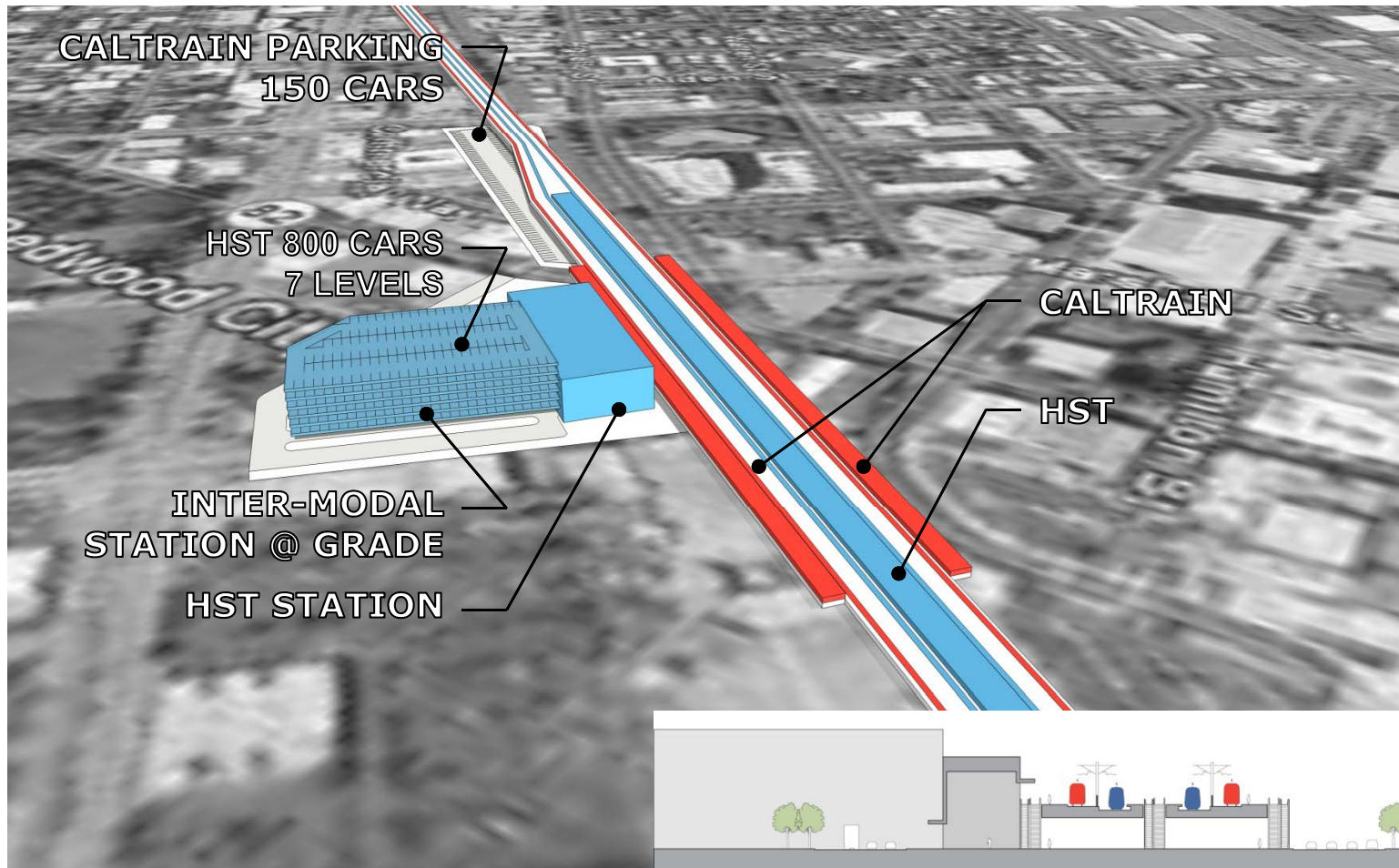
# CALTRAIN STATION WITHOUT A HST STATION

*High Speed Rail and Caltrain Aerial Alignment*



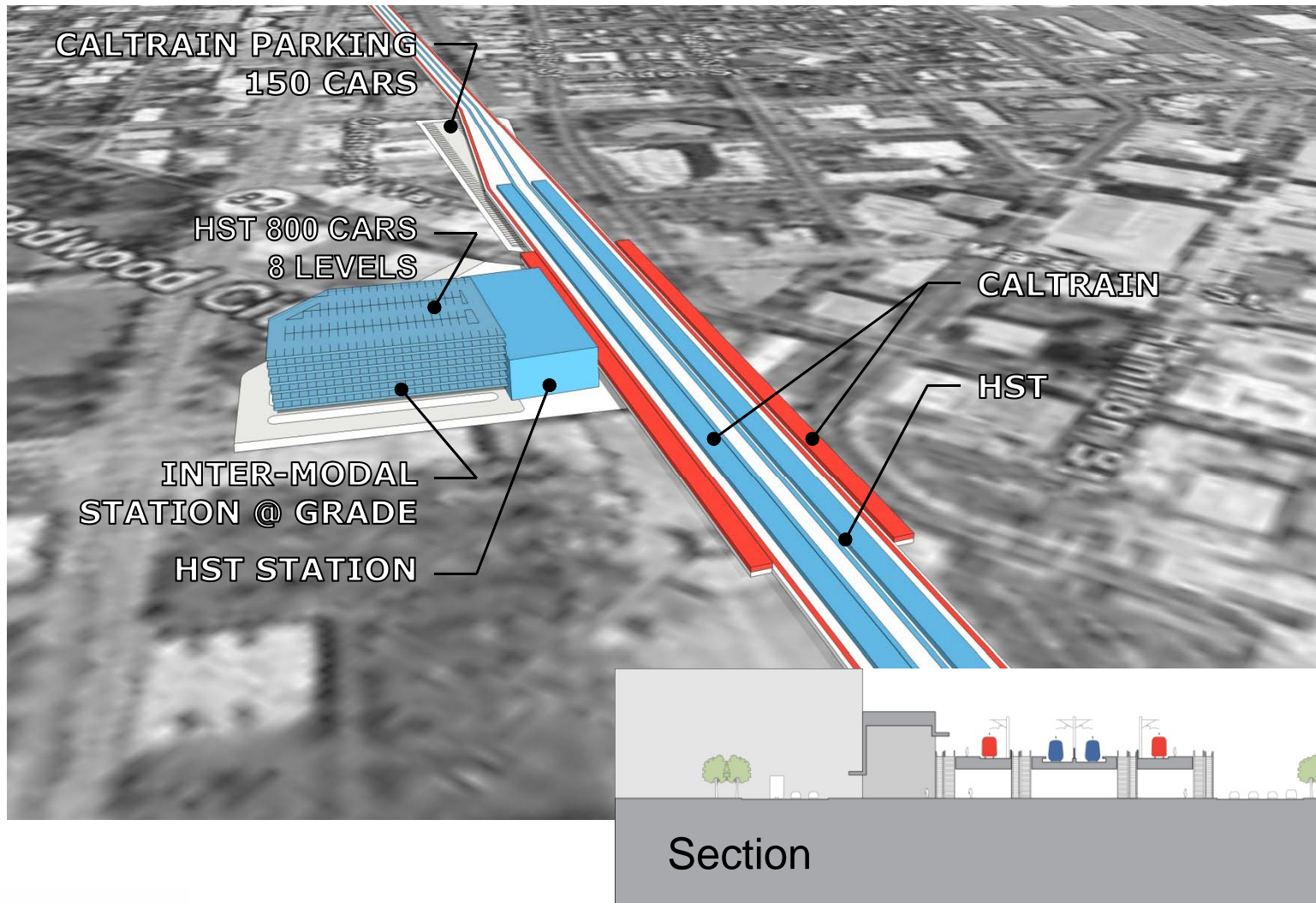
# HST STATION WITH CENTER PLATFORM

*Shared-Use High Speed Rail and Caltrain Aerial Alignment*

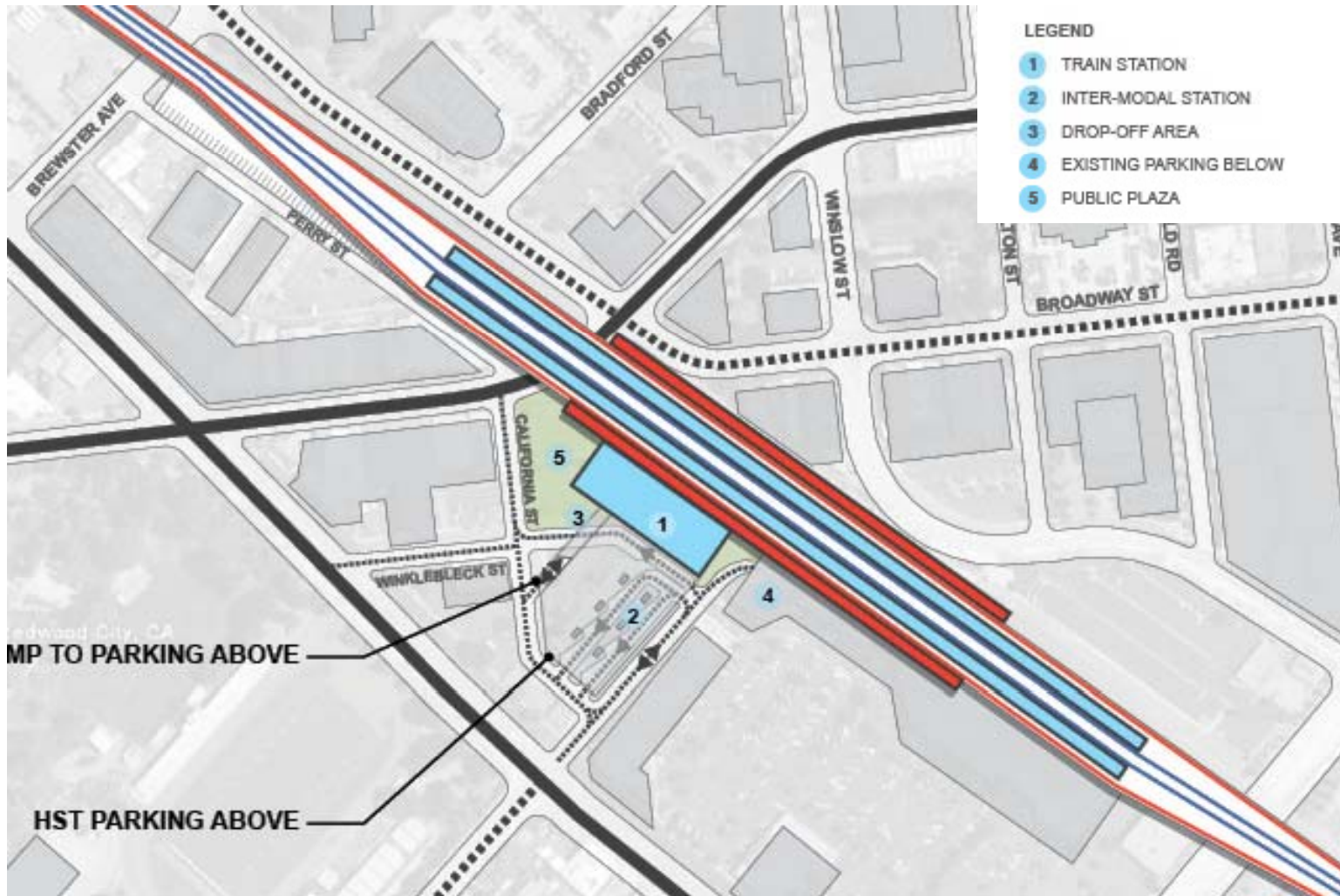


# HST STATION WITH SIDE PLATFORMS

*Shared-Use High Speed Rail and Caltrain Aerial Alignment*



# ACCESS DIAGRAM



# Questions and Answers

# Community Input

- What opportunities and benefits do you see a HST station brings to downtown Redwood City?
- What concerns/impacts do you see with a downtown HST station?

POTENTIAL BENEFITS	POTENTIAL IMPACTS
Statewide accessibility	Parking and traffic
Identity/destination	Downtown livability
Attracts investment/development	Growth inducing
Supports transit access and multi-modal connectivity	Construction activity

# *Next Steps for Project*

- **Draft EIR -- December 2010**

Preliminary HST Station Footprint EIR/S

- Roadways and critical intersections
- Transit, pedestrian/bicycle
- Parking
- Plans/policies

# *For More Information*

## **California High-Speed Rail Authority**

- [www.cahighspeedrail.ca.gov](http://www.cahighspeedrail.ca.gov)

## **Peninsula Rail Program**

- [www.caltrain.com/peninsularailprogram](http://www.caltrain.com/peninsularailprogram)
- [prp@caltrain.com](mailto:prp@caltrain.com)
- Bruce Fukuji, Outreach and Community Engagement -- [fukujib@samtrans.com](mailto:fukujib@samtrans.com)

## **San Francisco to San Jose**

- Terry Lightfoot, Public Involvement Manager -- [tlightfoot@hntb.com](mailto:tlightfoot@hntb.com)

## **City of Redwood City**

- [www.redwoodcity.org/HSR.html](http://www.redwoodcity.org/HSR.html)