

REPORT

To the Honorable Mayor and City Council
From the City Manager

December 13, 2004

Subject

Agreement to Provide Sanitary Sewer Connection and Service to the Edgewood Sewer Maintenance District

Recommendation

Approve and authorize execution of the Agreement between the Edgewood Sewer Maintenance District and the City of Redwood City Concerning Operation, Maintenance, and Treatment of Sewage.

Background

The Edgewood Sewer Maintenance District (the "District") was formed by the San Mateo County Board of Supervisor on January 19, 2004. The District consists of two approved subdivisions, with seventeen proposed single family dwellings, and one existing single family dwelling, with no future growth anticipated. The District is located in the unincorporated San Mateo County, between the City of Redwood City and the City of San Carlos and it does not belong in any other existing special sewer district in the area. A map of the district can be found in Exhibit "A", attached.

Attempts were made by the developer to incorporate the area into the nearby Emerald Lake Heights Sewer District. This attempt did not meet with the San Mateo Local Agency Formation Commission's (LAFCo) scrutiny, because the addition of these areas will increase the sphere of influence of the existing district. Therefore, a new district needed to be formed.

The County does not have any sewer collection system to serve this specific area, and it does not have any authority to purchase treatment capacity from South Bayside System Authority (SBSA) for this District. However, because the District is situated in the County, the County will maintain and operate the District.

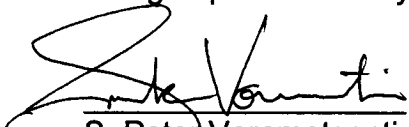
The developer is now asking the City to provide the District with treatment capacity, and for rights to use the City's collection system to transport their discharge to the SBSA. In exchange for this privilege, the developer will agree to pay an up front capital recovery charges of \$20,610.00. The customary Treatment Capacity and Capital Facility fees of \$715.50 and \$960.00, per connection, respectively, will also be charged along with monthly sewer charges collected once the connections are made.

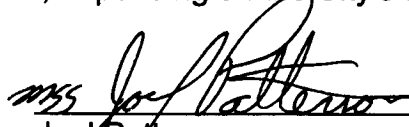
Alternative

Do not authorize the execution of this agreement and force the District (developer) to seek other means of sanitary service.

Fiscal Impacts

Funds in the amount of \$20,610.00 will be paid by the District to the City for capital recovery, and will go into the Sewer Capital Improvement Funds. As each building permit is issued, a Wastewater Treatment Capacity Fee of \$715.50 and a Sewer System Capital Facilities Fee amount of \$960.00 will be collected for the purchase of capacity from SBSA. After connection is made, the District will be billed a flat sewer charge updated each year, depending on the City's sewerage treatment expenditures.

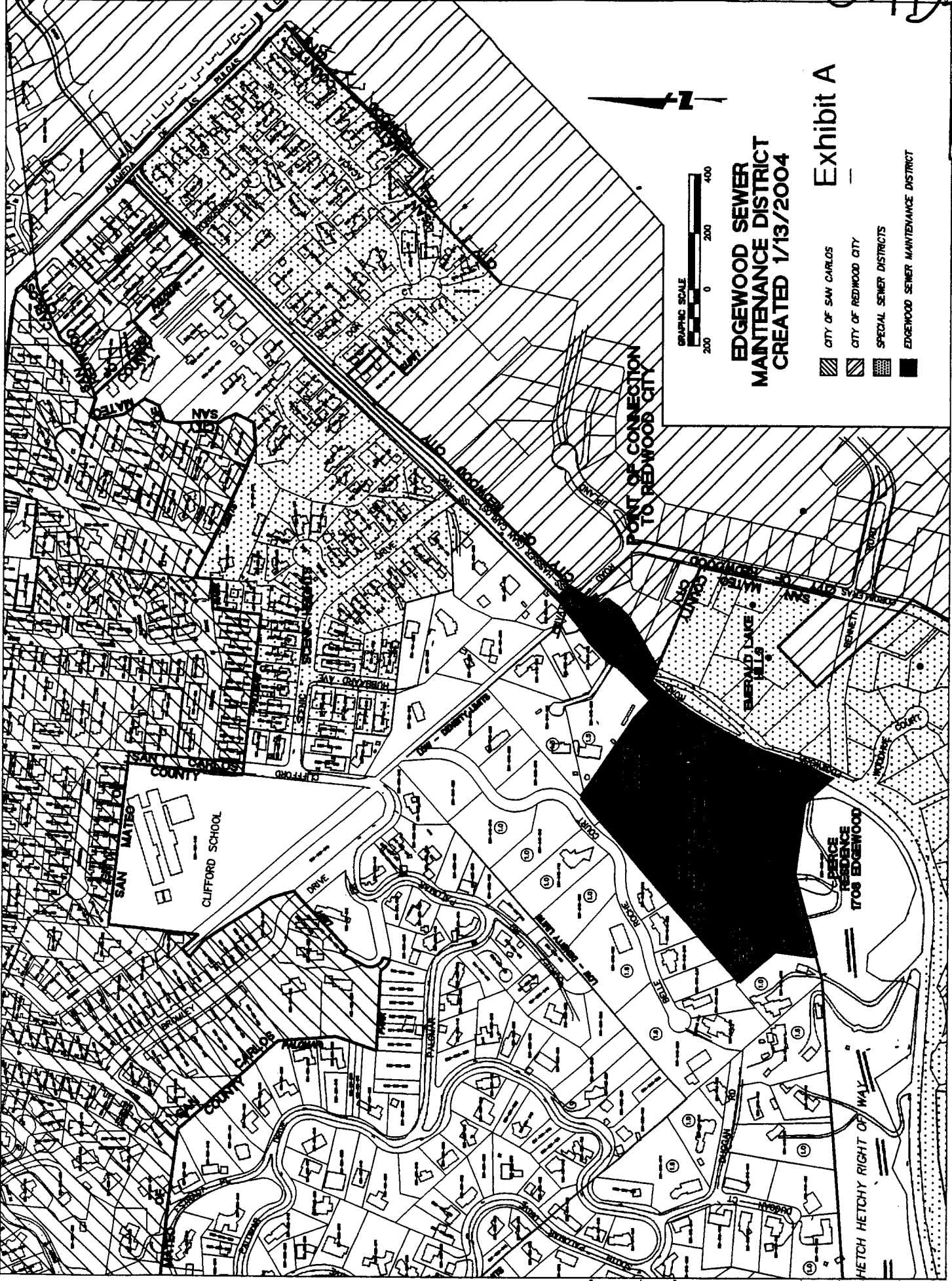

S. Peter Vorametsanti
Senior Civil Engineer


Joel Patterson
Community Development Services Director


Ed Everett
City Manager





SPV:ss

S:\library\reports\Sewer agreement for Edgewood District



**EDGEWOOD SEWER
MAINTENANCE DISTRICT
CREATED 1/13/2004**

Exhibit A

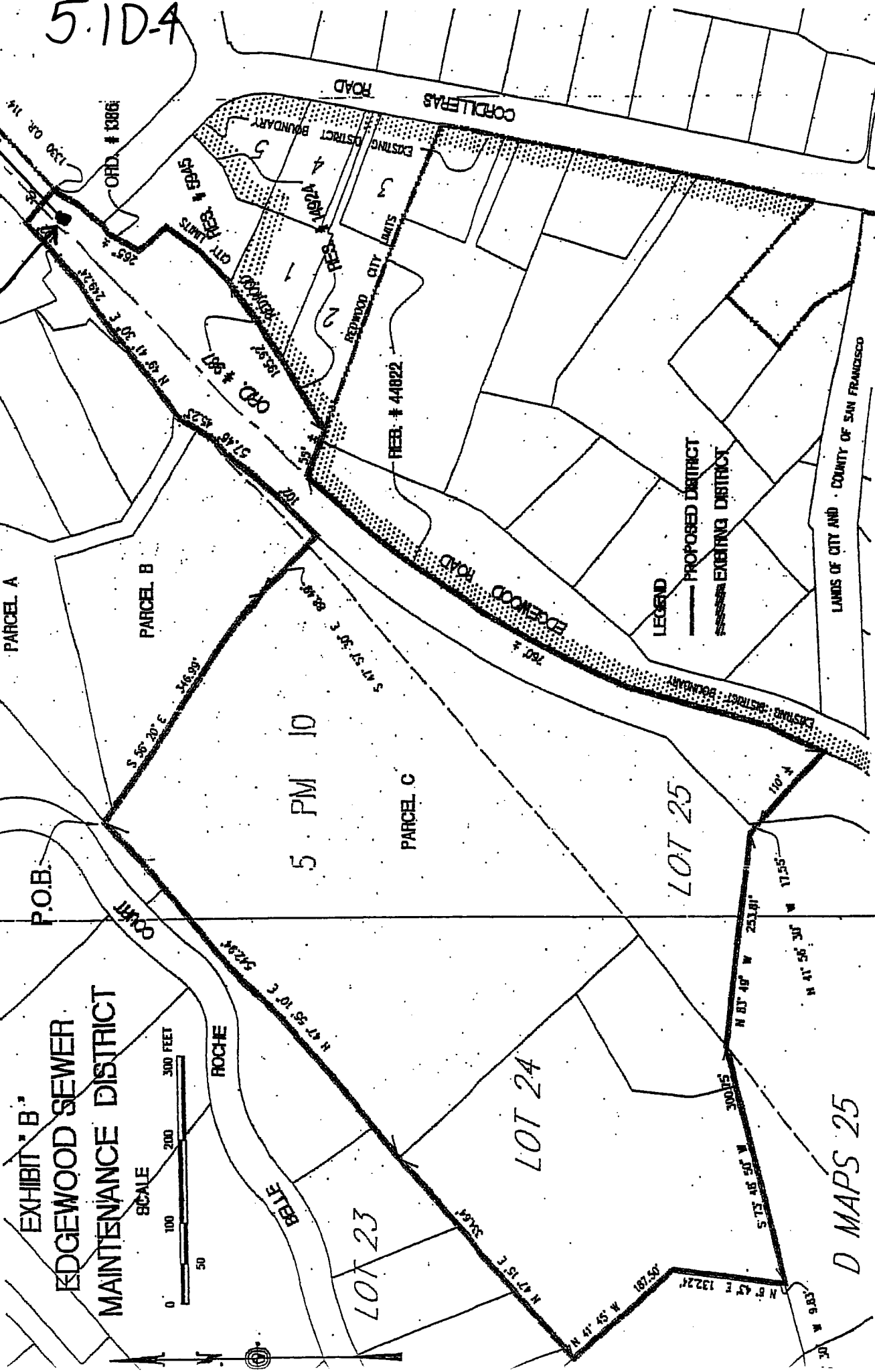
-  CITY OF SAN CARLOS
-  CITY OF REDWOOD CITY
-  SPECIAL SEWER DISTRICTS
-  EDGEWOOD SEWER MAINTENANCE DISTRICT

POINT OF CONNECTION
TO REDWOOD CITY



5.1D-4

DISCHARGE LOCATION TO CITY'S FACILITIES



PARCEL A

PARCEL B

PARCEL C

5 PM 10

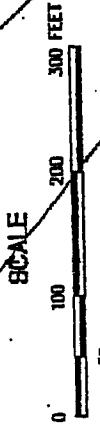
LOT 25

LOT 24

LOT 23

D MAPS 25

EXHIBIT "B"
EDGEWOOD SEWER
MAINTENANCE DISTRICT



LEGEND

— PROPOSED DISTRICT
 — EXISTING DISTRICT

LANDS OF CITY AND COUNTY OF SAN FRANCISCO

P.O.B.

COURT

ROCHE

BELLE

CORDELLERAS ROAD

CORDELLERAS ROAD

EDGEWOOD ROAD

ORD. # 13866

CIT. LOTS # 8945

ORD. # 987

HEB. # 44822

30015

30015

30015

30015

30015

30015

30015

30015

30015

30015

30015

30015

30015

30015

30015

30015

30015

30015

30015

30015

30015

30015

30015

30015

30015

30015

30015

30015

30015

30015

30015

30015

30015

30015

30015

30015

30015

30015

30015

30015

30015

30015

30015

30015

30015

30015

30015

30015

30015

30015

30015

30015

30015

30015

30015

30015

30015

30015

30015

30015

30015

30015

30015

30015

30015

30015

30015

30015

30015

30015

30015

30015

30015

30015

30015

30015

30015

30015

30015

30015

30015

30015

30015

30015

30015

30015

30015

30015

30015

30015

30015

30015

30015

30015

30015

30015

30015

30015

30015

30015

30015

30015

30015

30015

30015

30015

30015

30015

30015

30015

30015

30015

30015

30015

30015

30015

30015

30015

30015

30015

30015

30015

30015

30015

30015

30015

30015

30015

30015

30015

30015

30015

30015

30015

30015

30015

30015

30015

30015

30015

30015

30015

30015

30015

30015

30015

30015

30015

30015

30015

30015

30015

30015

30015

30015

30015

30015

30015

30015

30015

30015

30015

30015

30015

30015

30015

30015

30015

30015

30015

30015

30015

30015

30015

30015

30015

30015

30015

30015

30015

30015

30015

30015

30015

30015

30015

30015

30015

30015

30015

30015

30015

30015

30015

30015

30015

30015

30015

30015

30015

30015

30015

30015

30015

30015