

REPORT

To the Honorable Mayor and City Council
From the City Manager

November 14, 2005

Subject

Parcel Map No. 2005-02 for 3506 Glenwood Avenue

Recommendation

Approve Parcel Map No. 2005-02, and accept the dedication of a Public Service Easement.

Background

TCC Glenwood Development, LLC is the developer of Record of said real property located at 3506 Glenwood Avenue, Redwood City, California.

On September 22, 2004, the Subdivision Committee approved the Tentative Map for the subject property to subdivide the parcel into two lots. The Owners offer a public service easement. The easement will run parallel to the street frontage; it is five feet wide (5 ft.), and will be used for utility boxes and similar items that cannot fit within the sidewalk area.

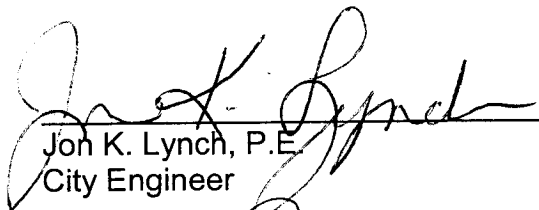
The Owners' engineer, MacLeod and Associates, has completed the parcel map in accordance with the Subdivision Map Act, Redwood City Ordinances, and to the satisfaction of Engineering & Construction.

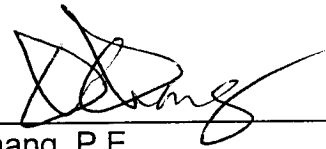
Alternative

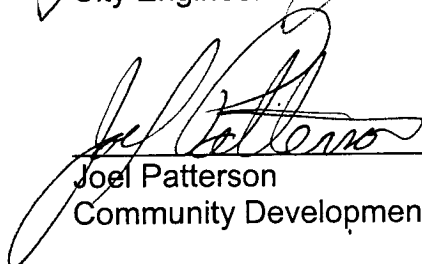
Do not approve the Parcel Map and the dedication of a public service easement, which would be contrary to public policy.

Fiscal Impacts

There are no fiscal impacts to the City by this action.

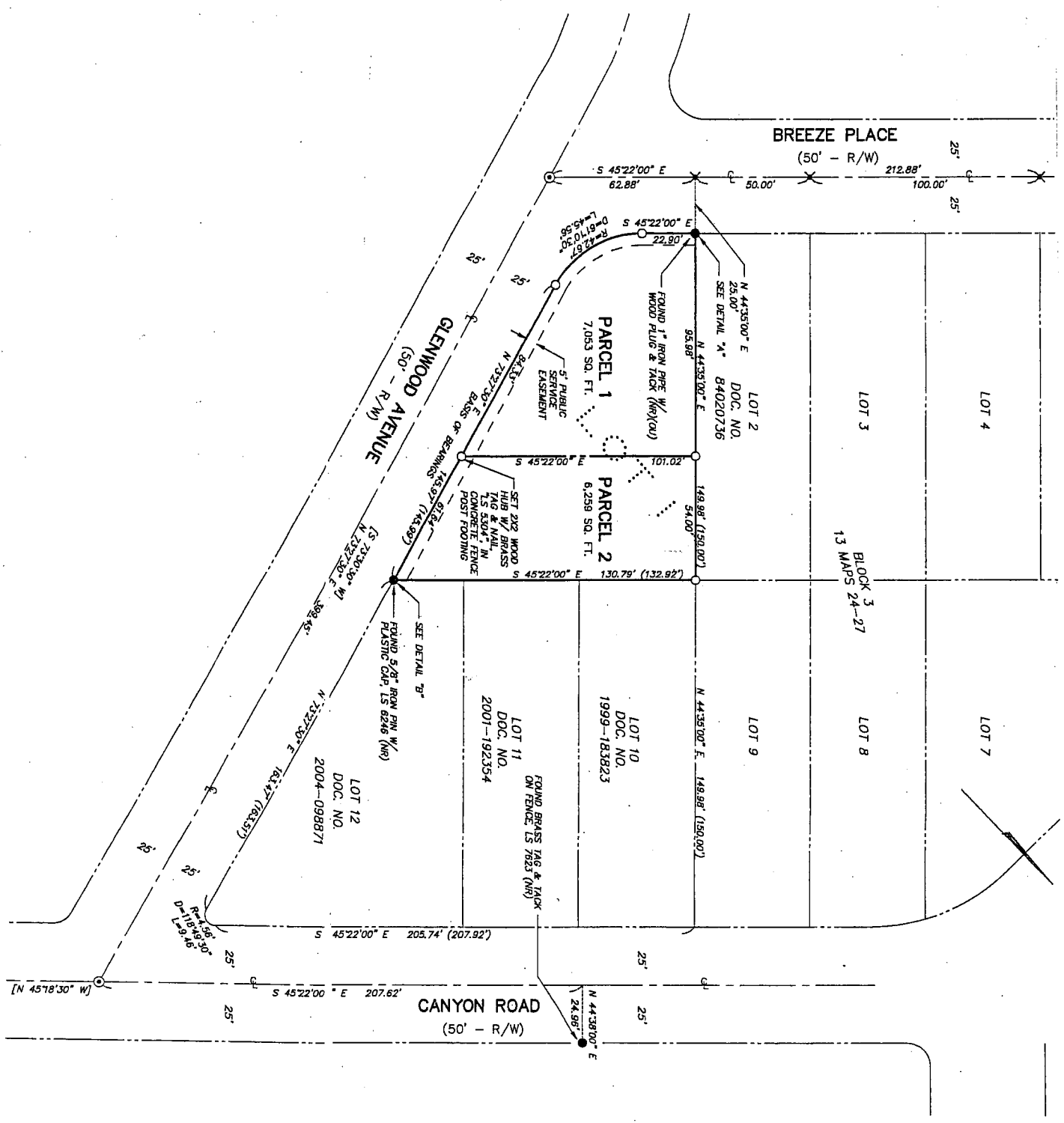

Jon K. Lynch, P.E.
City Engineer


Chu Chang, P.E.
Manager, Engineering & Construction


Joel Patterson
Community Development Services Director


Ed Everett
City Manager

6.1D-2



PARCEL MAP NO. 2005-02