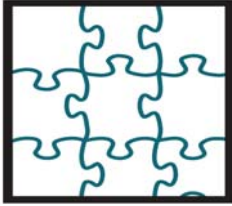


Appendix B



AGENDA

Redwood City's New General Plan

Wednesday, January 30, 2008

6:30 p.m. Refreshments/Open House

7:00 p.m. Presentation/Workshop Begins

Redwood City Council Chambers, 1017 Middlefield Road

Open House **6:30-7:00 p.m.**

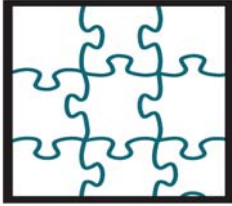
Visit with the New General Plan team and offer your thoughts on improving Redwood City's future.

Presentation/Workshop **Starts at 7:00 p.m.**

- Welcome (7:00 – 7:05).....Mayor Rosanne Foust
- Introductions and Meeting Overview (7:05–7:10).....Jill Ekas, Planning Department
- Recap of Project Progress (7:10 –7:20).....Tom Passanisi, Planning Department
- Public Input Session: Your thoughts and comments(7:20–8:20).....Julie Ortiz, CirclePoint
- Clarifying questions and comments (8:20–8:45).....Council and Planning Commission
- Next Steps (8:45 – 8:50).....Laura Stetson, Hogle-Ireland
- Concluding Remarks (8:50 – 9:00).....Mayor Foust
- Continuation of Open House in Lobby (9:00 – 9:20).....General Plan Team

For additional information on Redwood City's New General Plan and to sign-up for the project e-mail list or mailing list:

Visit... www.redwoodcity.org/generalplan
Call... Planning Division at (650) 780-7234
E-mail... generalplan@redwoodcity.org



What is a General Plan?

A general plan establishes policies, goals, and programs for the long-term physical development of our community. It's really a "blueprint for the future" of how our City will look and feel in future years as it sets parameters for managing growth and change. Every City in California is required to have a general plan comprised of seven required topics or "elements," including:

- **Land Use** – Location of housing, commerce, industry, and open space.
- **Circulation** – Transportation -- streets, roads, transit, bicycles, pedestrians; infrastructure.
- **Housing** – Existing and projected housing needs with programs and policies to provide housing for all economic groups.
- **Conservation** – Natural resources, soil, water, and wildlife.
- **Open Space** – Parks and open space preservation and acquisition.
- **Noise** – Identification of noise sources and programs to mitigate noise problems.
- **Safety** – Protection from seismic, geologic, flood, wildfire, and other hazards.

In addition to these seven required elements, cities may include optional elements that address issues of local importance. Redwood City's General Plan includes elements addressing historic and cultural resources and human services.

What has Redwood City done to date?

Redwood City started a General Plan update process in 2004. This effort was built upon many outreach meetings in the neighborhoods as well as with interested parties. This work led to the development of several draft elements.

"A Fresh Start"

During the same period, the City's work on the Downtown Precise Plan and other efforts made it clear that the 1990 General Plan needed a more thorough overhaul. The planning environment for developed communities on the San Francisco

Peninsula has become much more complex. Cities must balance their individual preferences with regional roles and responsibilities, all in a context of limited resources (water, roadways, schools, and so on). The New General Plan will look at fundamental issues more comprehensively and set the City on a course for sustainable growth and change.

The New General Plan process will provide everyone in Redwood City chances to participate and help put together a healthy and sustainable future for our City. The New General Plan is expected to be complete by the end of summer 2009.

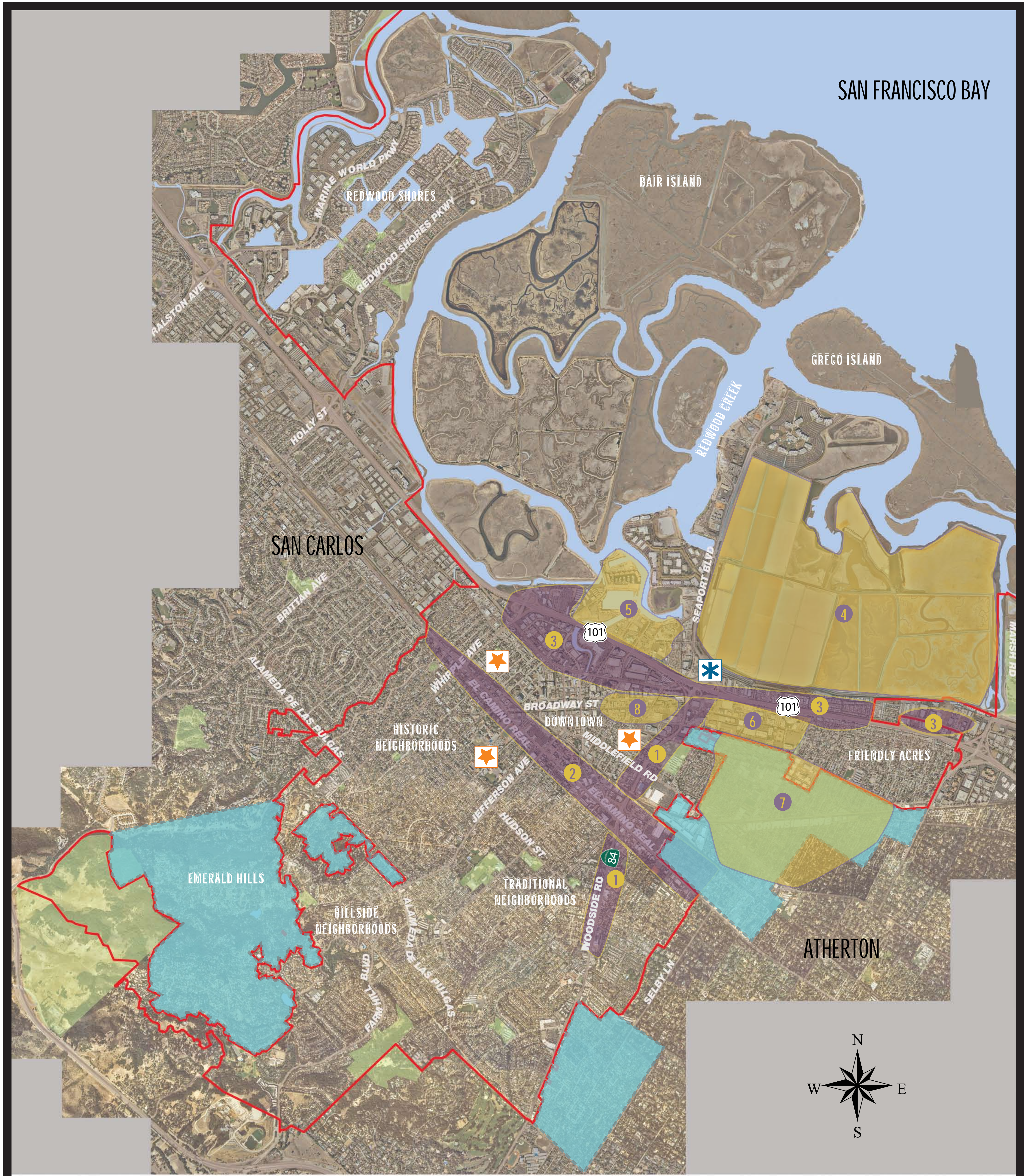
Guiding Principles for the New General Plan

The City proposes that the New General Plan reflect a number of Guiding Principles, listed below.

- *Plan for sustainability within our finite resources including but not limited to open space, water, energy, and air quality*
- *Ensure that change harmonizes with existing development to preserve our historic and neighborhood character*
- *Strengthen economic vitality to provide jobs, services, revenues and opportunities*
- *Preserve and generate awareness of our cultural, educational, economic, and recreational diversity and historic heritage*
- *Partner with and embrace our neighborhoods to improve the health, safety, and well being for all in our community*
- *Continue to make community participation an important part of achieving a greater city*
- *Work to develop attractive, convenient transportation alternatives to the automobile, including a unique transportation hub and ferry system*
- *Design for active pedestrian and bicycle-friendly streets and public spaces*



PROPOSED FOCUS AREAS FOR NEW GENERAL PLAN



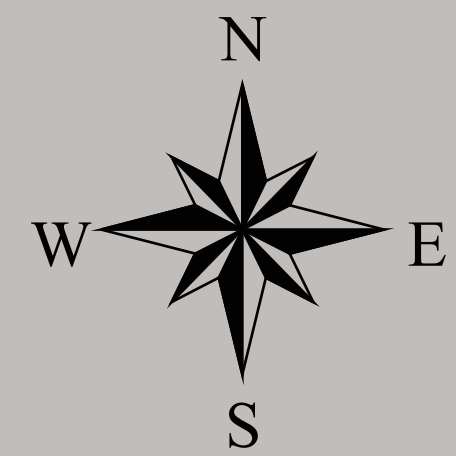
CORRIDORS

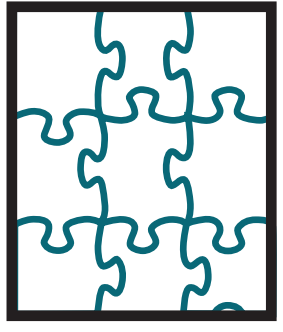
- 1 Woodside Road (Highway 84)
- 2 El Camino Real "Grand Boulevard"
- 3 Highway 101

DISTRICTS

- 4 Cargill Site
- 5 Pete's Harbor / Docktown / Peninsula Park
- 6 Eastside Industrial
- 7 North Fair Oaks
- 8 East (Lower) Broadway

-  Downtown - Adjacent Neighborhoods
-  Highway 101 / Woodside Road Interchange
-  Redwood City Boundary
-  Sphere of Influence Areas





PROPOSED GUIDING PRINCIPLES FOR REDWOOD CITY'S NEW GENERAL PLAN



Plan for sustainable open space, water, energy and air quality within our finite resources



Partner with and embrace neighborhoods to improve health, safety and well being for all



Ensure change harmonizes existing development and preserves historic and neighborhood character



Continue to make community participation an important part of achieving a greater city



Strengthen economic vitality to provide jobs, services, revenues and opportunities



Work to develop attractive, convenient transportation alternatives including a transportation hub and ferry system



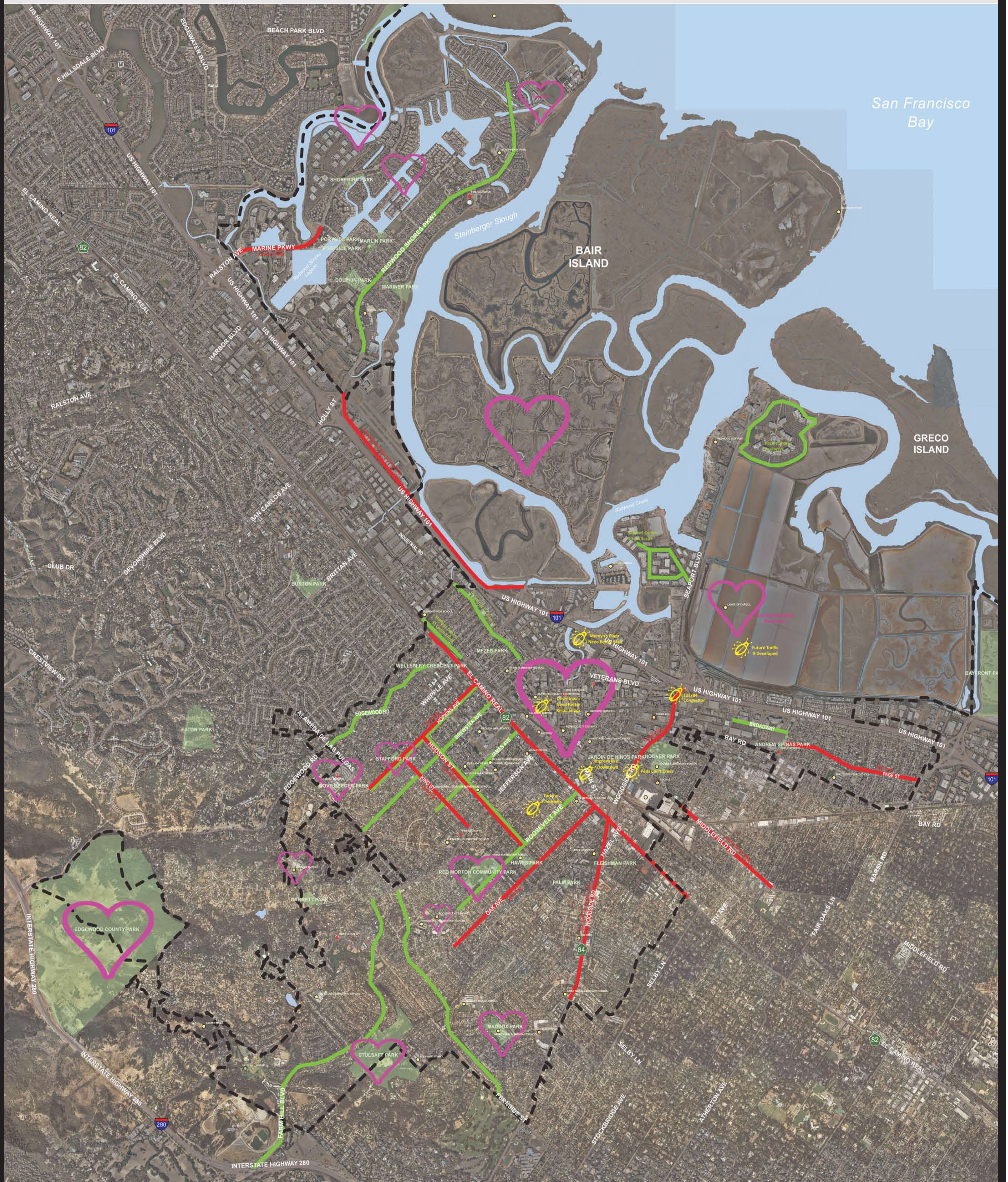
Preserve and generate awareness of cultural, educational, economic, recreational diversity and historic heritage



Design for active pedestrian and bicycle-friendly streets and public spaces



AREAS WE LOVE / AREAS THAT "BUG" US



San Francisco Bay

BAIR ISLAND

GRECO ISLAND

 <p>Favorite Routes (attractive, convenient, safe, friendly)</p>	 <p>Frustrating Routes (congestion, speeding, lacking amenities for pedestrians/bikes)</p>	 <p>Likes & Loves (neighborhoods/downtown, city facilities (parks & libraries) and businesses)</p>	 <p>Big Bugs (parking, traffic, retail, land-use issues)</p>	<p>0 0.25 0.5 1.0 Miles</p> 	
---	--	--	--	---	---

