

# CONNECTIONS

## Recycled Water Project Update

Redwood City Recycled Water Project

April 2007

### Redwood Shores Construction Update

#### Radio Road Testing Complete

Final testing has been completed along the east end of Redwood Shores Parkway and Radio Road! Final connections are still being made, with paving expected to occur (weather dependent) in early April until complete. Completing this area has taken longer than anticipated and we thank you for your continued cooperation and patience with the road conditions.

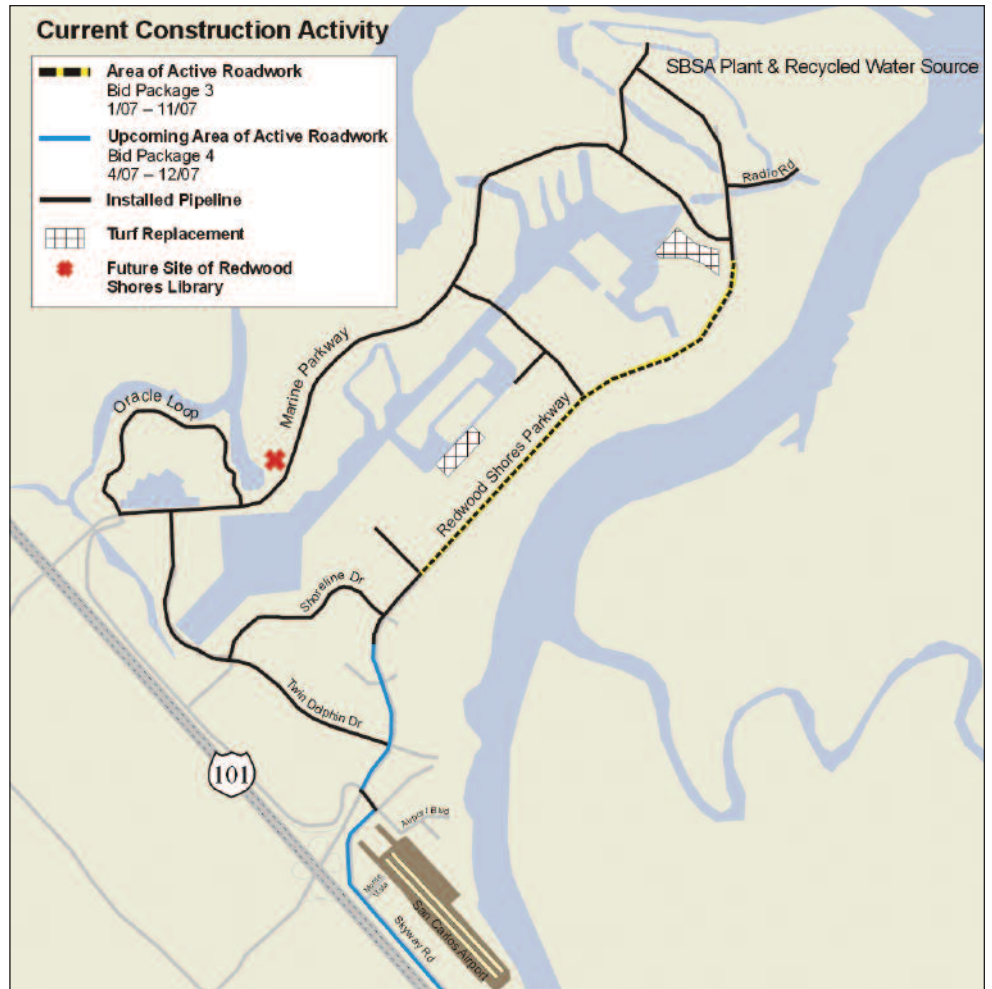
#### Active Pipeline Installation on Redwood Shores Parkway

Redwood Shores Parkway will see pipeline installation well underway during April. Construction began just west of the Shoreline Drive intersection and will continue to move east toward Radio Road. Until reaching Egret Lane, the westbound lane will be closed in segments as construction progresses along Redwood Shores Parkway. The westbound traffic will be diverted to the eastbound side, which will support two-way traffic (separated by cone delineators and dividers). Upon reaching Egret Lane, pipeline installation will switch to the eastbound lanes, now with two-way traffic in the westbound lanes until connecting the pipeline at Shearwater Parkway. Signage and flaggers will be present to ensure safe traffic flow. Please look for these lane changes and drive extra carefully. Please see the graphic for an example of this lane shift.

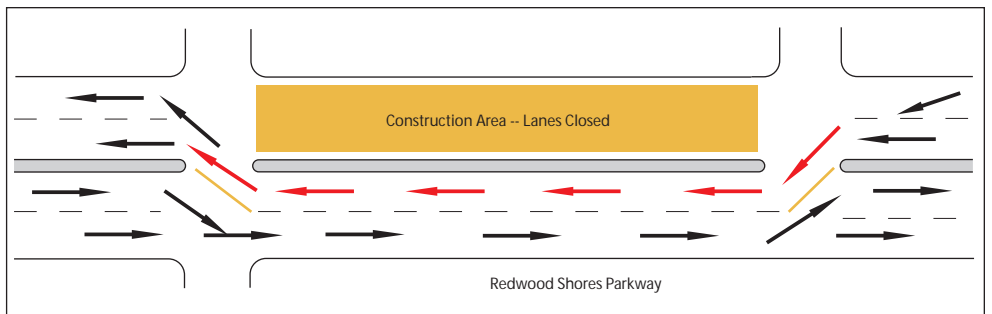
For the convenience of those traveling along Redwood Shores Parkway, the construction hours have been moved to begin at 8:00 AM and will now end at 4:30 PM. Prep work and cleanup may precede and follow these hours slightly. Near Sandpiper School and Community Center, construction will be scheduled for April 9-13 (Spring Break) and hours will be extended from 8:00 AM to 6:00 PM to expedite activity in this area during this time when school commuters will be least affected. The Community Center and preschool will continue normal activities.

#### Bridge Parkway, Davit Lane and Shell Parkway

Bridge Parkway, Davit Lane and Shell Parkway have been paved and restriping activity will likely occur in April. A final slurry seal (road surface coating) will likely be applied this summer, which will aesthetically restore roads affected by pipeline installation.



Pipeline installation has begun on Redwood Shores Parkway, just west of Shoreline Drive, and will continue east toward SBSA.



This graphic is an example of the lane-shift that will occur on Redwood Shores Parkway during active construction, shifting westbound traffic to the opposite side in segments between existing medians.

#### Skyway Road Upcoming Construction

The next phase of pipeline installation along Skyway Road and the western end of Redwood Shores Parkway and has been awarded to Shaw Construction. It is anticipated that construction will start in late April or early May and will likely begin on the southern end of Skyway Road, heading in the direction toward Redwood Shores Parkway.

All construction activity is weather-dependent and details can change frequently. The best way to get the latest construction details is by visiting <http://www.RedwoodCity.org/water>. To

sign up for project email broadcasts, send an email to [RCupdate@DataInstincts.com](mailto:RCupdate@DataInstincts.com).



**REDWOOD CITY**  
RECYCLED WATER PROJECT  
A VALUABLE COMMUNITY RESOURCE

Project Information Resources:  
(650) 743-5759

[RCConstruction@DataInstincts.com](mailto:RCConstruction@DataInstincts.com)  
[www.RedwoodCity.org/RecycledWater](http://www.RedwoodCity.org/RecycledWater)