

CONNECTIONS

Recycled Water Project Update

Redwood City Recycled Water Project

February 2007

Redwood Shores Construction Update

Davit Lane and Shell Parkway Soon to Be Completed

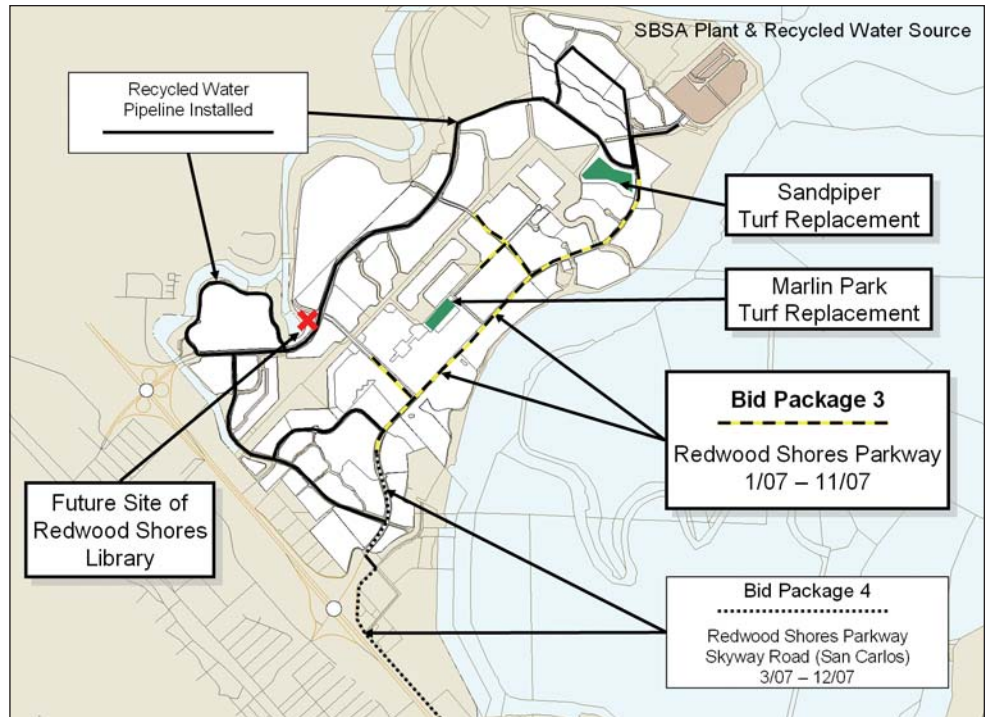
The sections of Davit Lane and Shell Parkway nearest Redwood Shores Parkway are expected to have pipeline installation completed within the next couple of weeks, weather permitting. Pipeline installation has been moving quickly in these areas. Work will accommodate through-traffic, but please drive carefully to prepare for potential road changes, equipment, and/or workers in the roadways.

Work on Redwood Shores Parkway to Begin

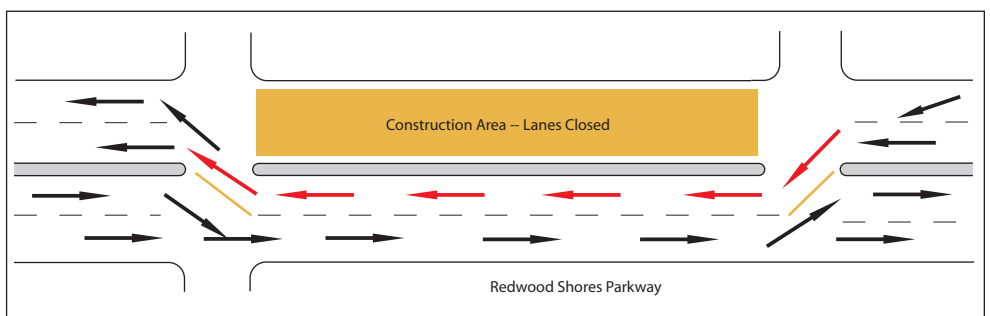
Once pipeline installation along Davit Lane and Shell Parkway has been completed, work will begin on Redwood Shores Parkway, beginning just west of the Shoreline Drive intersection and moving east toward Radio Road. The westbound lane will be closed in segments as construction progresses along Redwood Shores Parkway. The westbound traffic will be diverted to the eastbound side. The eastbound side will then support two way traffic, separated by cone delineators and dividers. Signage, and flaggers will also be present to ensure safe traffic flow. This traffic control will be very similar to the lane diversion used on Twin Dolphin Drive last summer. Please look for these lane changes and drive extra carefully. Please see the graphic for an example of this lane shift.

Marine Parkway Paving Complete

Paving has been completed along Marine Parkway. Some follow-up activity, including restriping and off-street pavement repairs, is expected to occur in February



Bid Packages 3 and 4 will complete pipeline installation along sections of Redwood Shores Parkway, Skyway Road, Shell Parkway, Davit Lane, and Bridge Parkway. Bid Package 3 was awarded to KJ Woods, the same contractor who installed pipe along Twin Dolphin Drive and Oracle Parkway. Also noted are the library and turf-replacement projects occurring in Redwood Shores this year (see back).



This graphic is an example of the lane-shift that will occur on Redwood Shores Parkway during active construction, shifting westbound traffic to the opposite side in segments between existing medians. Please read text for more details.

or early March. There are a few trenched sections covered by steel plates along the road that will remain unpaved until final pipeline connections are made, which should occur mid-month. The plated areas will be replaced with pavement.

**Other Projects Underway
This Year in Redwood City**

Redwood Shores Library

Initial construction work is underway on the Redwood Shores Library, which is expected to open in July of 2008. The future library site is at 399 Marine World Parkway (corner of Bridge and Marine World Parkways).

Library Construction Schedule

Notice to Proceed	Jan 22, 2007
Drive Piles	March 13 - April 9, 2007
Pour Slab Foundation	June 2007
Complete Framing/ Enclose Building	Aug/Sept 2007
Complete Interior	Feb/Mar 2008
Complete Exterior Painting, Striping	April 2008
Scheduled to Open	Jul/Aug 2008

**Saving Water with
Synthetic Turf**

As recommended by the Redwood City Recycled Water Task Force and as part of Redwood City's ongoing water conservation efforts, over seven acres of grass is being replaced by synthetic turf at several fields in Red Morton Park. Synthetic turf has already been installed at Griffin/Bechet Field, and the grass at McGarvey and Mitchell Fields will be replaced, beginning in January, with completion estimated for late spring 2007. Two more sport fields in Redwood Shores, Marlin Park and Sandpiper School, are currently under design. Turf replacement is not expected to start until June to accommodate scheduled sporting activities and school.

So far the City has successfully utilized synthetic turf at Hoover Community Park Sports Field and on the playing field at Fair Oaks Elementary School. Synthetic turf saves money because it requires very little maintenance (no water, no fertilizer, no mowing or other landscaping).

**Redwood Shores
Lagoon Dredging**

Analysis and feasibility studies are currently underway to evaluate options for dredging the Redwood Shores Lagoon. Depending on the results of the studies, dredging activity could begin this year, although more likely in early 2008. Prior to the start of dredging, the City must apply through the DMMO (Dredging Material Management Office) which contains various agencies (such as the Army Corps of Engineers) to dredge and possibly dispose of loose dredge material. Part of the application involves laboratory testing of the silt material to be removed. So far studies indicate that the material may be suitable for disposal in the Bay at authorized sites or may even be used for wetland fill. Once tests are complete, City consultants can proceed with the next steps of design planning and how best to meet required specifications.



This information was updated on February 1, 2007. Some details may change. You can get the latest construction details by visiting <http://www.RedwoodCity.org/RecycledWater> and by signing up for project email broadcasts by sending an email to RCupdate@DataInstincts.com.

Project Information Resources:
(650) 743-5759
RCConstruction@DataInstincts.com
www.RedwoodCity.org/RecycledWater