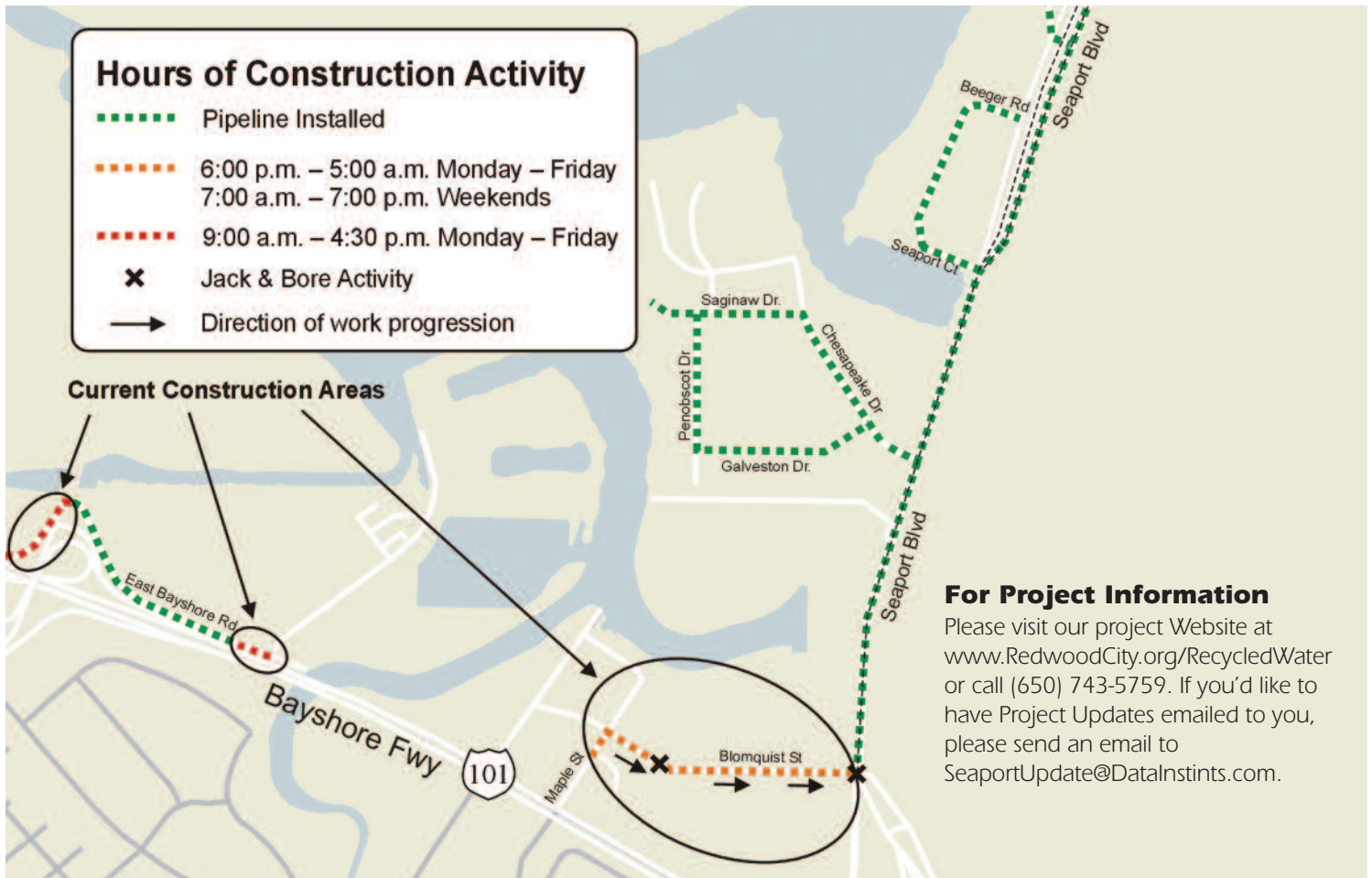


CONNECTIONS

Recycled Water Project Update

Redwood City Recycled Water Project — Seaport Area

September 2008



For Project Information

Please visit our project Website at www.RedwoodCity.org/RecycledWater or call (650) 743-5759. If you'd like to have Project Updates emailed to you, please send an email to SeaportUpdate@DataInstincts.com.

Seaport Area Pipeline Construction Update

Maple Street, Blomquist Street and Seaport Boulevard

The final step in this phase of construction activity will begin this Sunday night starting at 6 PM with jack and bore excavation on Blomquist Street just south-east of Maple Street. Pipeline trenching and installation on Maple and Blomquist Street will also get under way during the weekend and continue in the direction of Seaport Boulevard. Please watch for traffic flaggers and follow their directions. Please contact our offices if you have any questions regarding these activities at (650) 743-5759.

East Bayshore Road and Bicycle/Pedestrian Path parallel to Hwy. 101

The contractor will be making repairs to the pipeline section along the Bicycle/Pedestrian Path that parallels Highway 101 and along a section of East Bayshore Road. Access to East Bayshore Road and the Bike/Ped path will be maintained during construction. In the near future, it will be necessary to temporarily close the bike path again to complete trenching, installation and connection between the bike path segment and the E. Bayshore Road segment. We will keep all interested parties notified of those temporary closure dates.

Please contact our offices if you have any questions regarding these activities at (650) 743-5759.



Project Information Resources:
(650) 743-5759

SeaportUpdate@DataInstincts.com
www.RedwoodCity.org/RecycledWater