



Our Water Supply

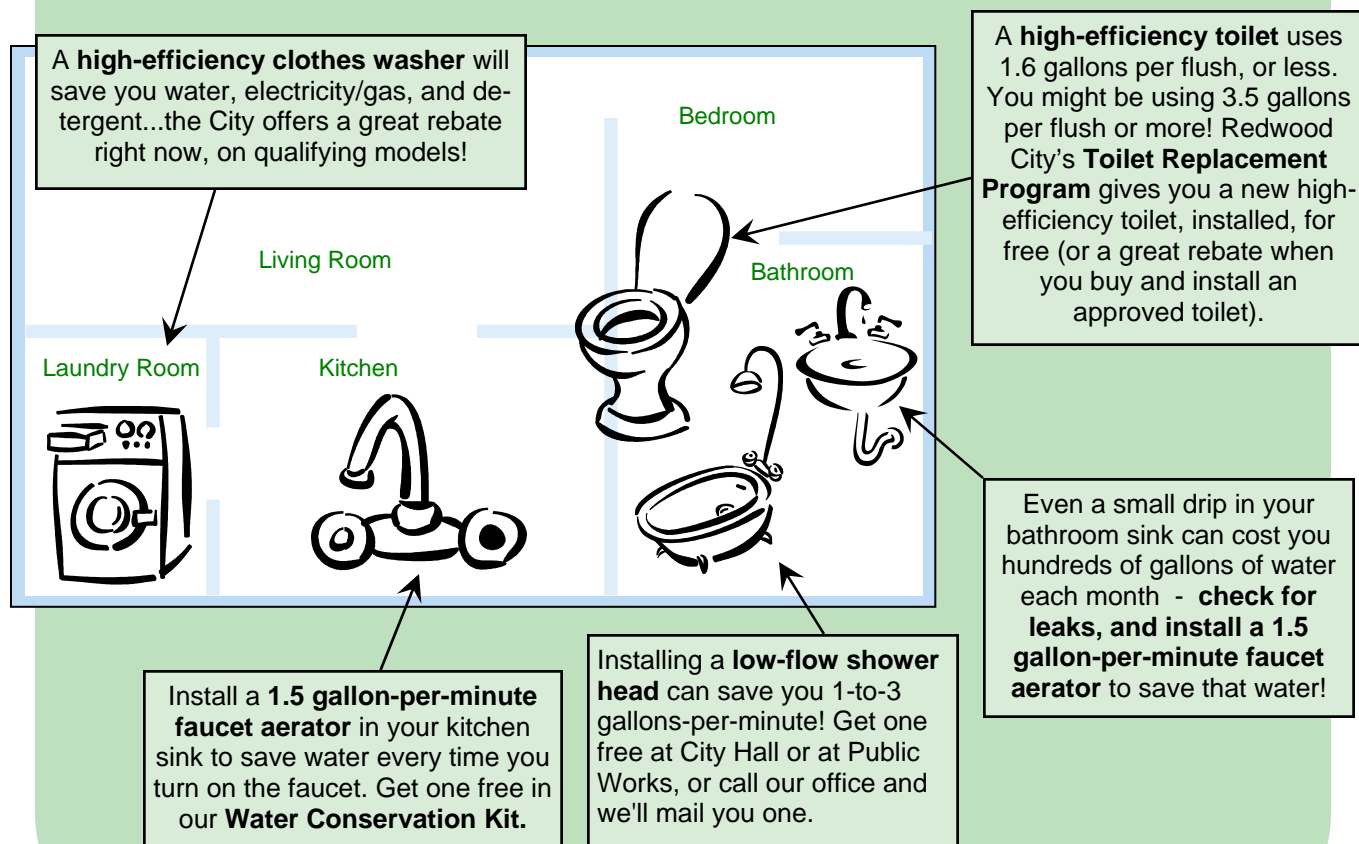
Helping Redwood City to be a WaterWise Community

Is Your Home "WaterWise?"

Find Out Here!

Being *WaterWise* means you're doing all you can to save water throughout your home. For the wintertime, it's a good idea to focus inside the home, where there's really a lot you can do to make sure you're being WaterWise! One easy step is to call our office and request a WaterWise Conservation Kit, which includes faucet aerators, toilet leak detection tablets, a plumbing handbook, and specific instructions on how to perform a WaterWise home survey. Or you can schedule your free in-home water survey—our technician will come to your house and help you find ways to save water, and give you a free Water Conservation Kit. Call 780-7436 to schedule your free in-home water survey.

In the meantime, check the home diagram below and compare the WaterWise options to your own house - you may be surprised at where YOU can save water!



For more information on Redwood City's Water Conservation Programs, please visit our website or call our Conservation office:

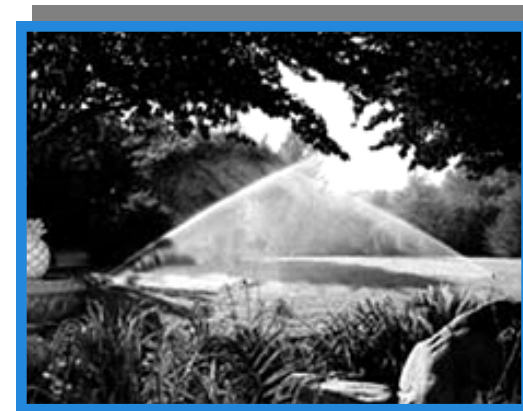
Winter Irrigation Tips

Are you wasting water while it rains?

Winter is upon us, and Redwood City would like to offer you some winter water-saving ideas!



First and foremost, remember that winter is the time to turn off irrigation systems so you can start saving water right away.



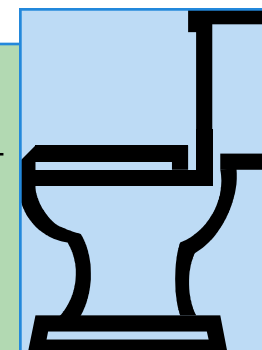
During December, January and February rainfall typically will provide all the water that turf and shrubs might need. Keep an eye on plants under overhangs that may not receive rain-water, and hand-water these areas as needed throughout winter.

Here are a few other winter landscaping tips:

- Aerate and de-thatch your lawn to help with water absorption and retention.
- Avoid fertilizing turf in winter due to high runoff potential, and slow fertilizer absorption due to cold temperatures.
- Have burlap or blankets on hand to protect your frost-sensitive plants like roses or citrus.
- Protect any exposed irrigation equipment and pipes from freezing.
- Make sure your lawn mower blades are sharp. A dull blade will cause the tips of the grass to fray and turn brown, causing the lawn to look dry (if you don't know how to safely sharpen your mower blades, have it serviced by a trained mechanic).
- Re-stake small trees that need support from strong winter winds.

Let's Talk Flushing Performance...

When it comes to how well a toilet functions...did you know that all models of toilets are now tested for their flushing performance level, and then rated and compared to industry standards? Redwood City's **Toilet Replacement Program** has set a very high standard for the flushing performance of the toilets we provide for free, and the models of toilets that qualify for a rebate.



The industry standard flushing performance for a high-efficiency (1.6 gallons per flush) toilet is 250 grams of waste material. Redwood City's free high-efficiency toilets, however, are able to flush more than 500 grams—better than twice the industry standard.

Want more information on flushing performance? Then take a look at the **Maximum Performance (MaP) Study**, which independently tested all toilet models and ranked them according to their flushing performance. Go to www.redwoodcity.org/publicworks/water/MaP.pdf to view this study. You'll see that in Redwood City, high-efficiency is the only way to go!

Your service club, neighborhood association, community organization, or other group can learn more about water conservation — Redwood City offers a **Water Conservation Speakers Bureau** that provides an informative and interesting presentation for your gathering. Call 780-7436 to schedule a speaker for your group.