



Redwood City

Inner Harbor Specific Plan

Task Force Meeting

#3

July 23, 2013





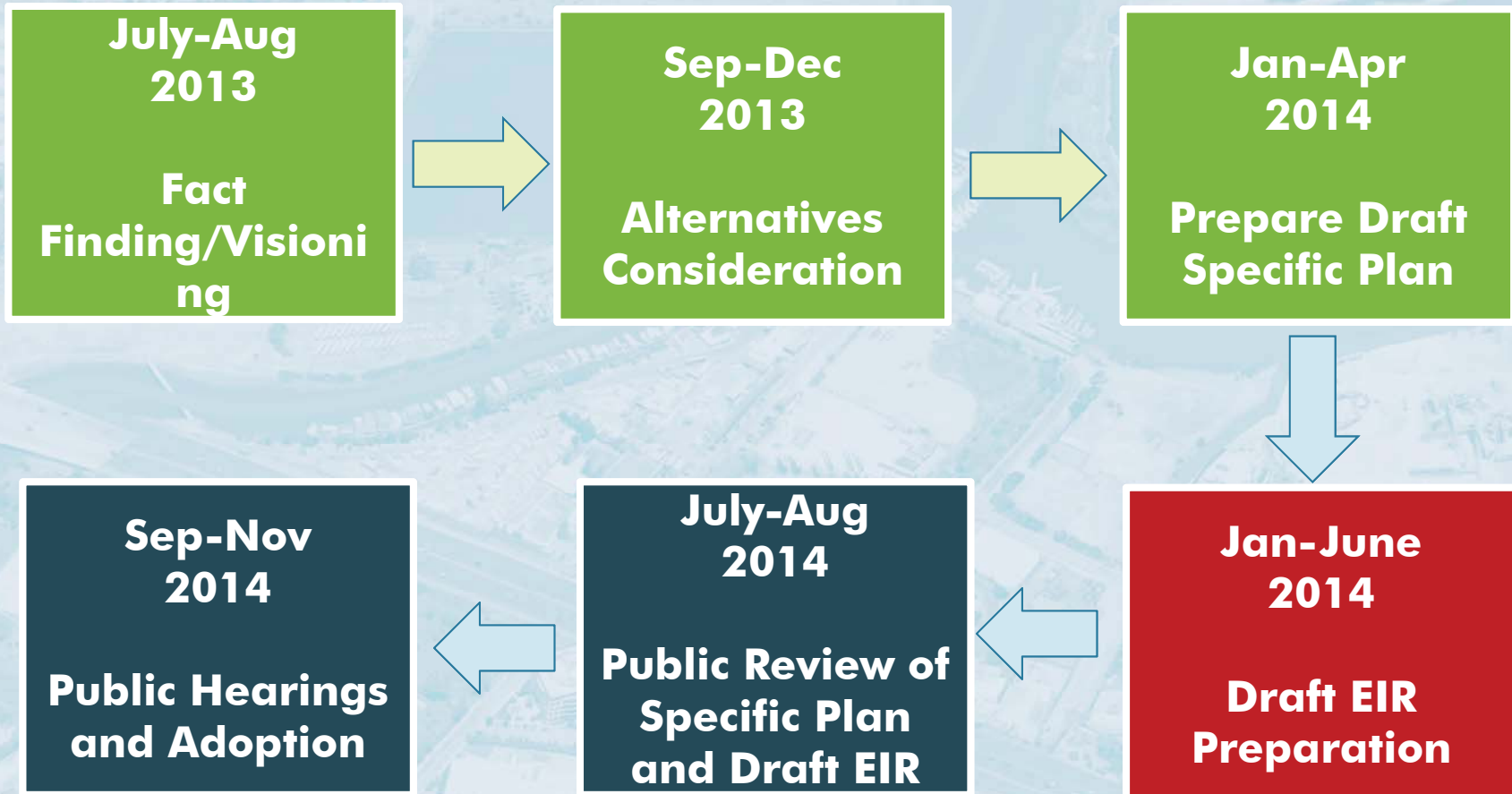
Redwood City Inner Harbor
Specific Plan Area



- **County Jail (under construction)**
- **Vacant City property**
- **Malibu Golf and Grand Prix**

- **T & H Building Supplies**
- **Granite Rock offices**
- **Ferrari property**

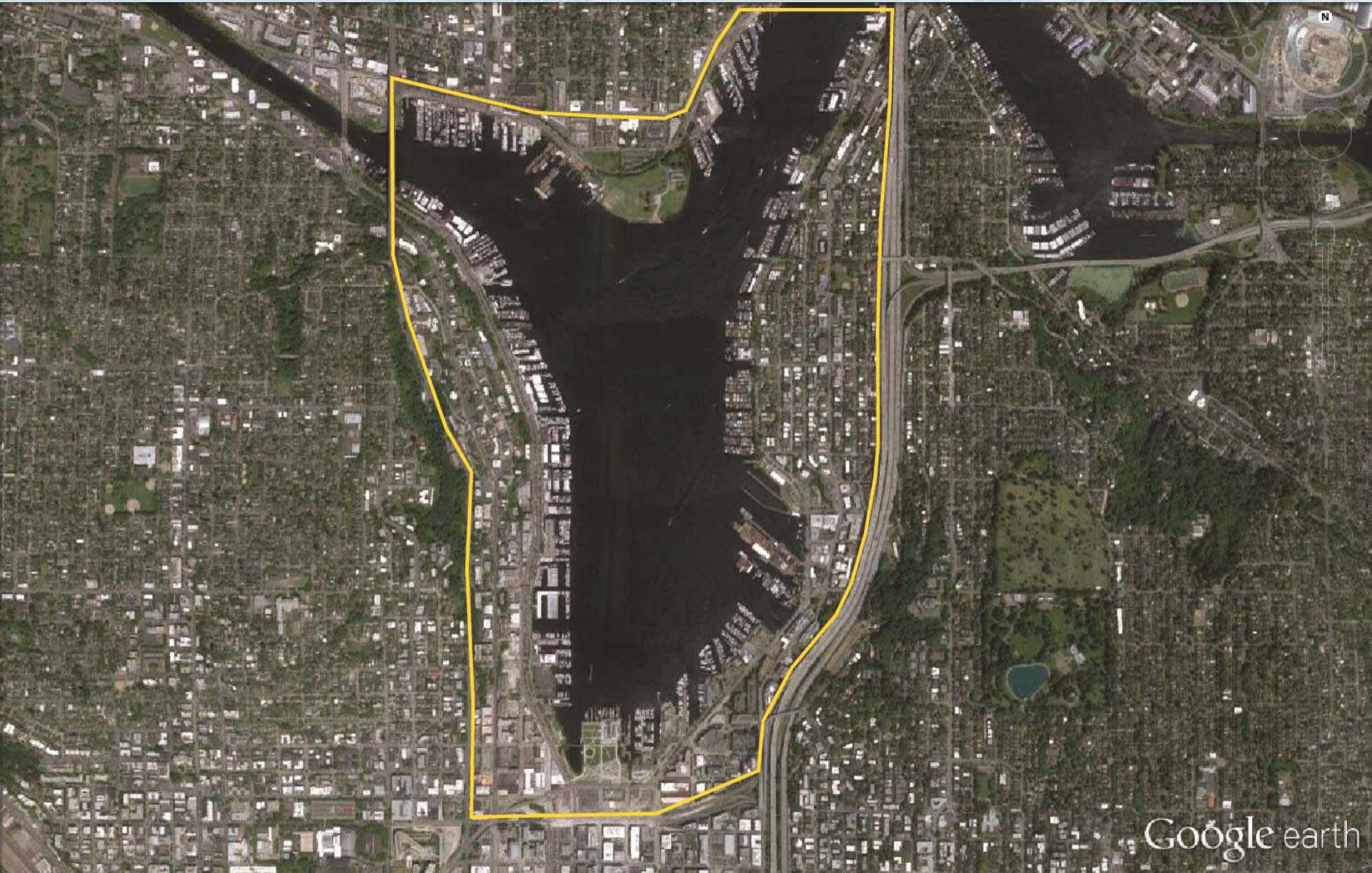
tentative schedule



Project Precedents

- **Lake Union, Seattle WA**
- **South Pier District, Sheboygan WI**
- **Dana Point Harbor, Dana Point CA**
- **RiverPlace, Portland OR**

Lake Union, Seattle WA



Lake Union, Seattle WA



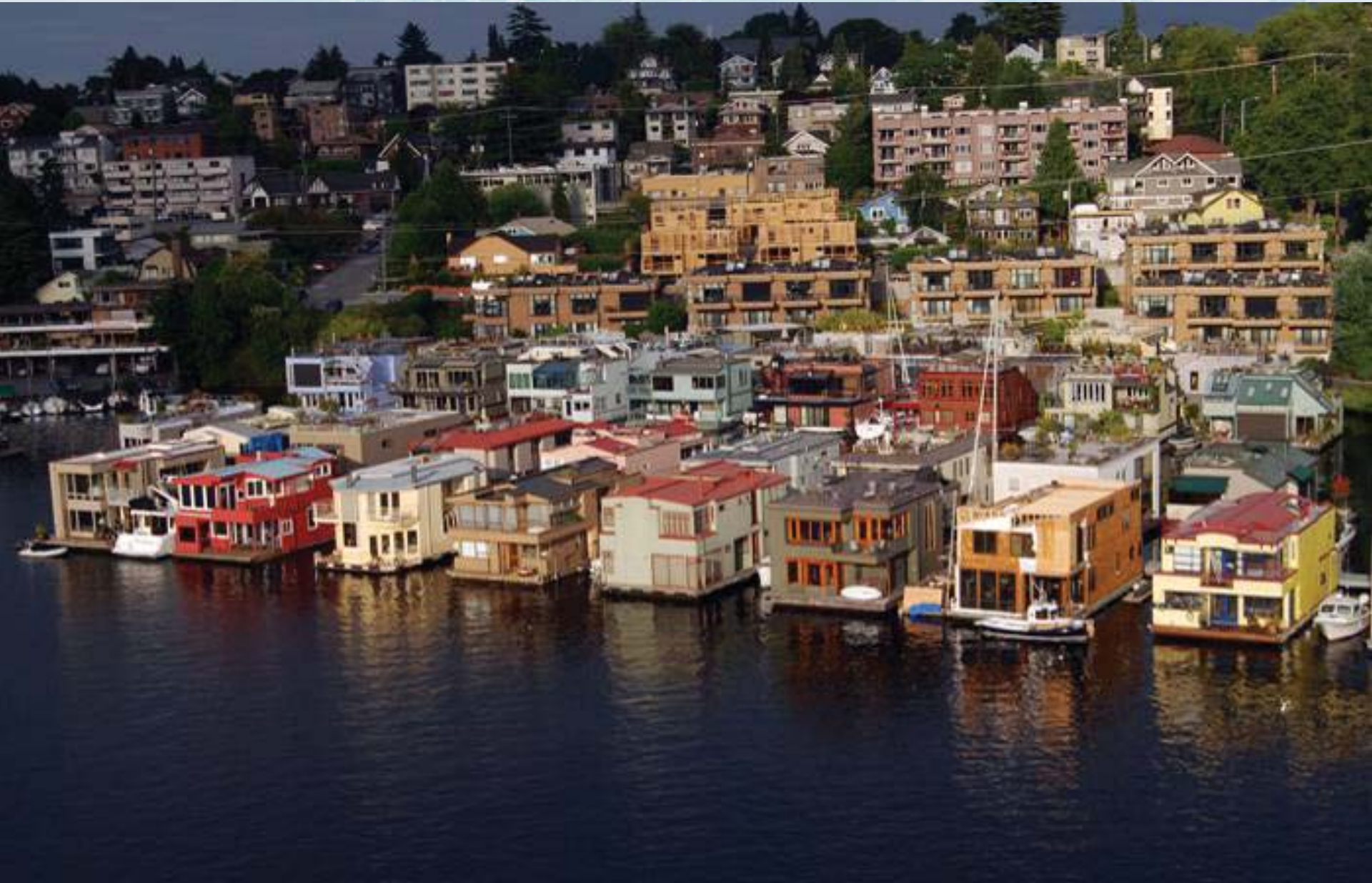
Lake Union, Seattle WA



Inner Harbor Specific Plan Task Force



Lake Union, Seattle WA



Lake Union, Seattle WA



Inner Harbor Specific Plan Task Force



Lake Union, Seattle WA



Lake Union, Seattle WA



Lake Union, Seattle WA



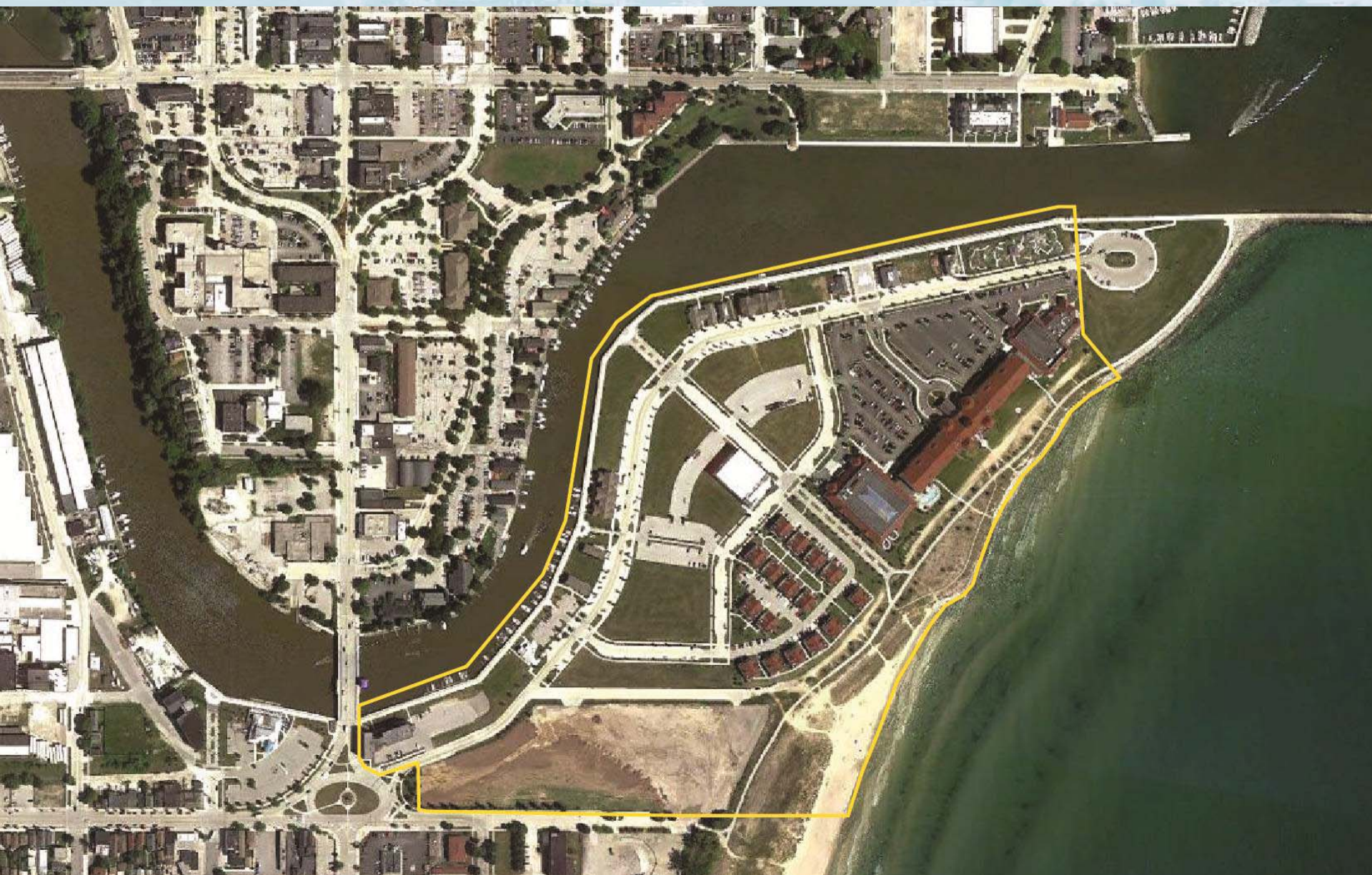
Lake Union, Seattle WA



Lake Union, Seattle WA

- **Lake is about 580 acres, near downtown**
- **History of Native American settlement**
- **Lumber mills, manufacturing, shipbuilding**
- **Current mix of uses:**
 - Residential – range of densities, including live-aboard watercraft
 - Office, life sciences + light industry
 - Hotels and water-based recreation
 - Public parks
- **Notable: re-use of historic buildings;**

South Pier District, Sheboygan WI



South Pier District, Sheboygan WI



Inner Harbor Specific Plan Task Force



South Pier District, Sheboygan WI



South Pier District, Sheboygan WI



Inner Harbor Specific Plan Task Force



South Pier District, Sheboygan WI



Inner Harbor Specific Plan Task Force



South Pier District, Sheboygan WI



Inner Harbor Specific Plan Task Force



South Pier District, Sheboygan WI



South Pier District, Sheboygan WI



South Pier District, Sheboygan WI



South Pier District, Sheboygan WI

- **42-acre brownfield site**
- **Formerly used to store coal, salt, fertilizer, petroleum**
- **Planned + partially built program:**
 - **Resort/convention center anchors redevelopment**
 - **Retail, office + live/work**
 - **Fishing and charter boat fleets**
 - **Riverfront promenade, lakefront park + trails**
- **Notable: includes historic fishing shanty architecture; restored dunes**

Dana Point Harbor, Dana Point CA



Dana Point Harbor, Dana Point CA



Dana Point Harbor, Dana Point CA



Dana Point Harbor, Dana Point CA



Dana Point Harbor, Dana Point CA



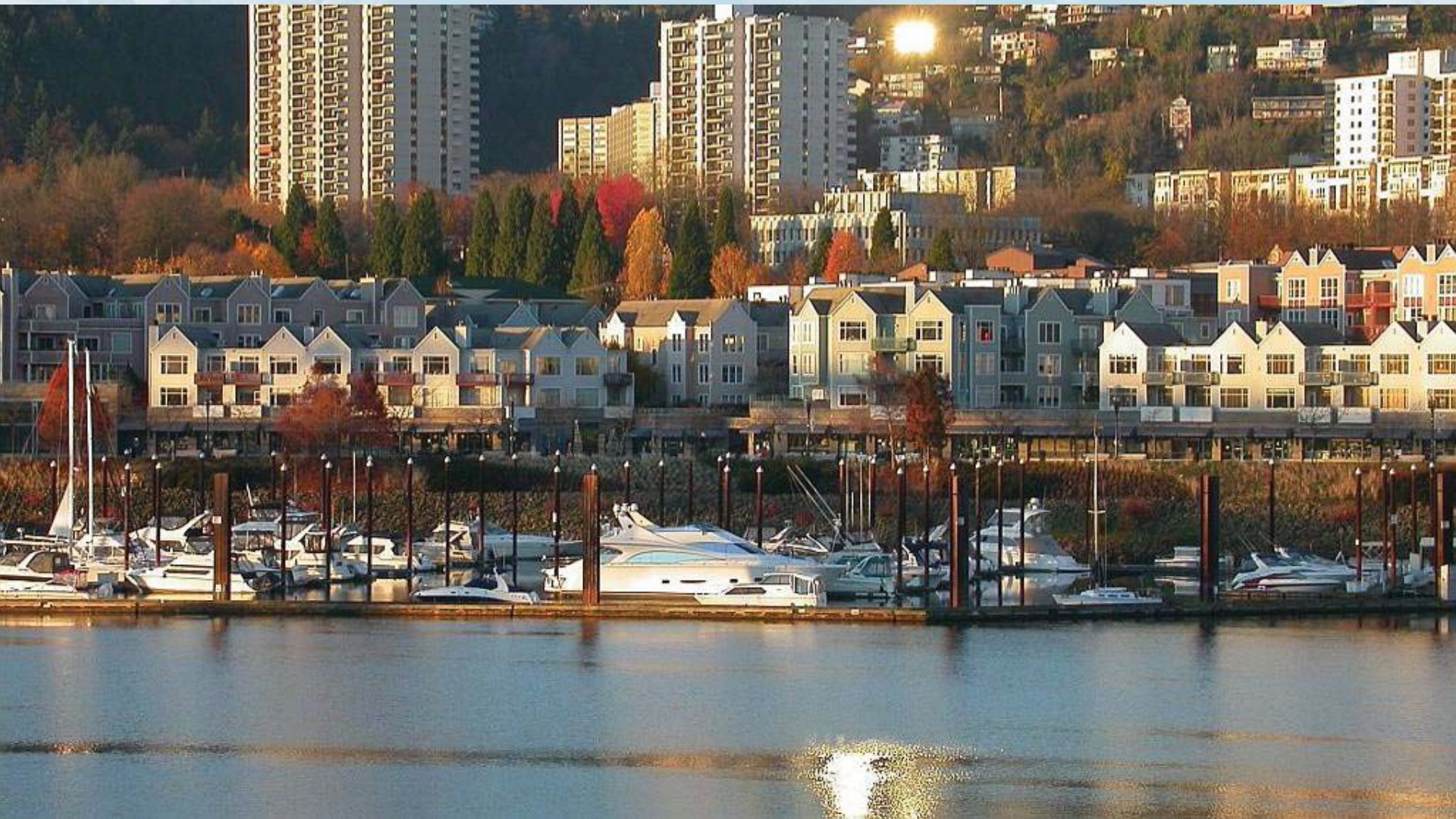
Dana Point Harbor, Dana Point CA

- **Land area approx. 280 acres**
- **Program:**
 - **Marinas and boat launches**
 - **Public park space**
 - **Residential**
 - **Marine industry**
- **Notable: site of Ocean Institute**

RiverPlace, Portland OR



RiverPlace, Portland OR



RiverPlace, Portland OR



Inner Harbor Specific Plan Task Force



RiverPlace, Portland OR



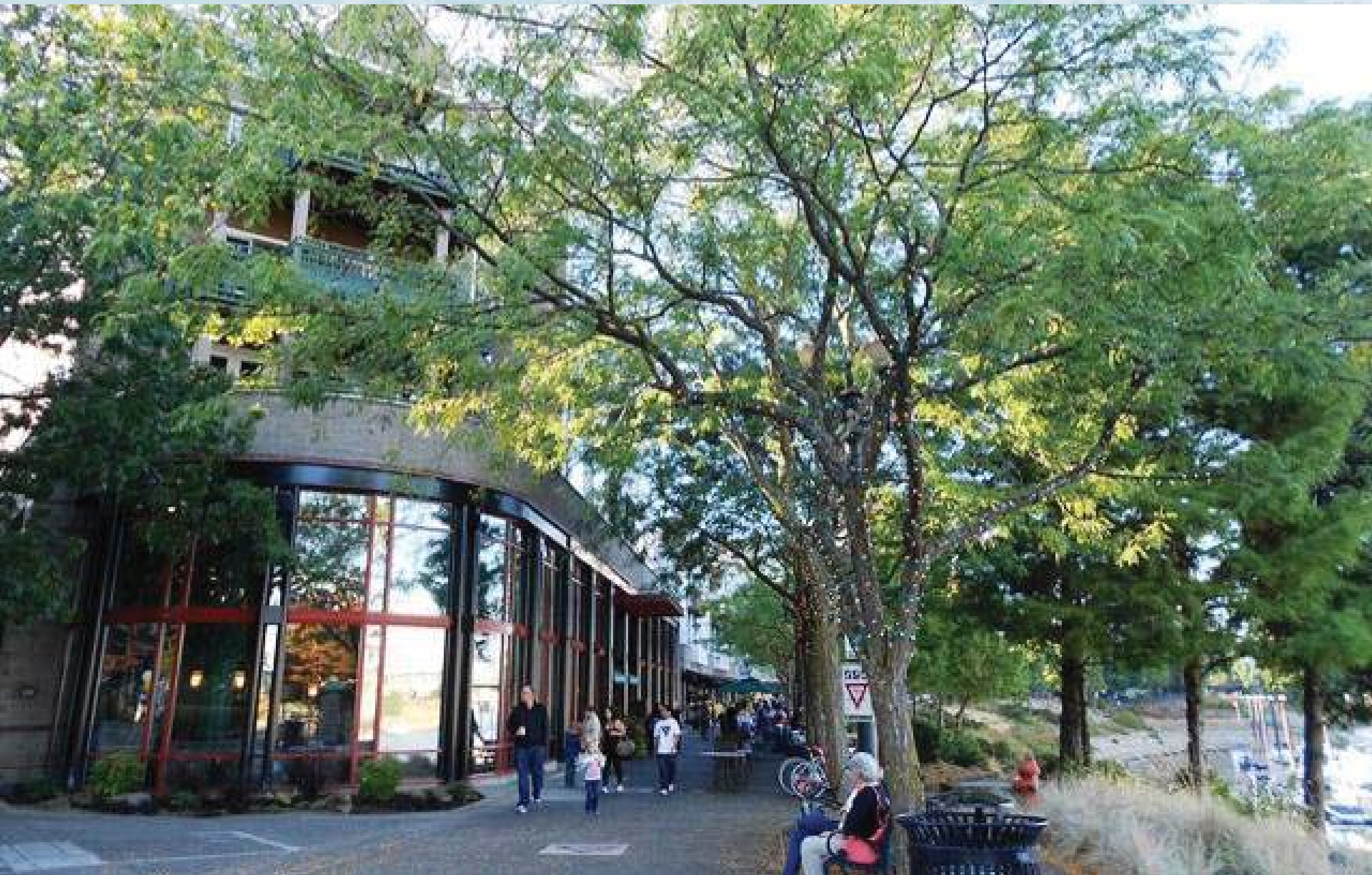
RiverPlace, Portland OR



Inner Harbor Specific Plan Task Force



RiverPlace, Portland OR



RiverPlace, Portland OR



RiverPlace, Portland OR

- **73 acres vacant/underutilized riverfront**
- **Program:**
 - 700 residential units (ownership and rental)
 - Commercial office 40,000 s.f.
 - Retail 26,500 s.f.
 - Over 300 hotel rooms
 - Public open space and recreation
- **Notable: received EPA Phoenix Award for Outstanding Brownfield Redevelopment**



Redwood City

Inner Harbor Specific Plan

Task Force Meeting
#3

July 23, 2013

