



Redwood City

Inner Harbor Specific Plan

Task Force Meeting

#2

July 9, 2013



Project Precedents

- Granville Island, Vancouver B.C.
- South Waterfront, Portland OR
- Jack London Square, Oakland CA
- Brooklyn Basin, Oakland CA
- Chula Vista Bayfront, Chula Vista CA
- Waterfront District, Bellingham WA
- Napa, CA
- Petaluma Waterfront, Petaluma CA

Granville Island, Vancouver B.C.



Granville Island, Vancouver B.C.



Inner Harbor Specific Plan Task Force



CANADIAN
IMPERIAL
BANK
COMMERCIAL



Granville Island 1971

Taylor Martin

Granville Island, Vancouver B.C.



Granville Island, Vancouver B.C.



Granville Island, Vancouver B.C.



Granville Island, Vancouver B.C.

- 38 acres
- Former industrial area
- Built program:
 - Residences
 - Artist studios and light industry
 - Marina
 - Retail including farmer's market, brewery, restaurants
 - Indoor and outdoor public space
- Notable: retains industrial feel by re-using old warehouse buildings and other vestiges

South Waterfront, Portland OR



Inner Harbor Specific Plan Task Force





View of South Waterfront District, looking south from the Ross Island Bridge

South Waterfront, Portland OR



South Waterfront, Portland OR



Inner Harbor Specific Plan Task Force



South Waterfront, Portland OR







South Waterfront, Portland OR

- 140 acres
- Former uses: vacant + industrial (lumber mill, industrial equipment, chemical plants)
- Planned + built program:
 - Urban-scale housing + office uses
 - Retail + hotels
 - Parks + riverfront greenway
 - Multimodal transit hub
- Notable: part of “Science + Technology Quarter” – higher education, job incubator

Jack London Square, Oakland CA



Jack London Square, Oakland CA



JACK
LONDON
SQUARE



RAIL
CROSSING
ROAD

KEEP
TO
RIGHT



Jack London Square, Oakland CA



Jack London Square, Oakland CA



Jack London Square, Oakland CA

- Ca. 35 acres
- Former uses: port operations and later retail/office
- Planned + built program:
 - Intensify retail, office, dining, and hotel uses
 - Public green spaces
 - Easy access to Amtrak station
- Notable: entertainment district includes historic bar & landmark; family-oriented events programming

Brooklyn Basin, Oakland CA







Brooklyn Basin, Oakland CA



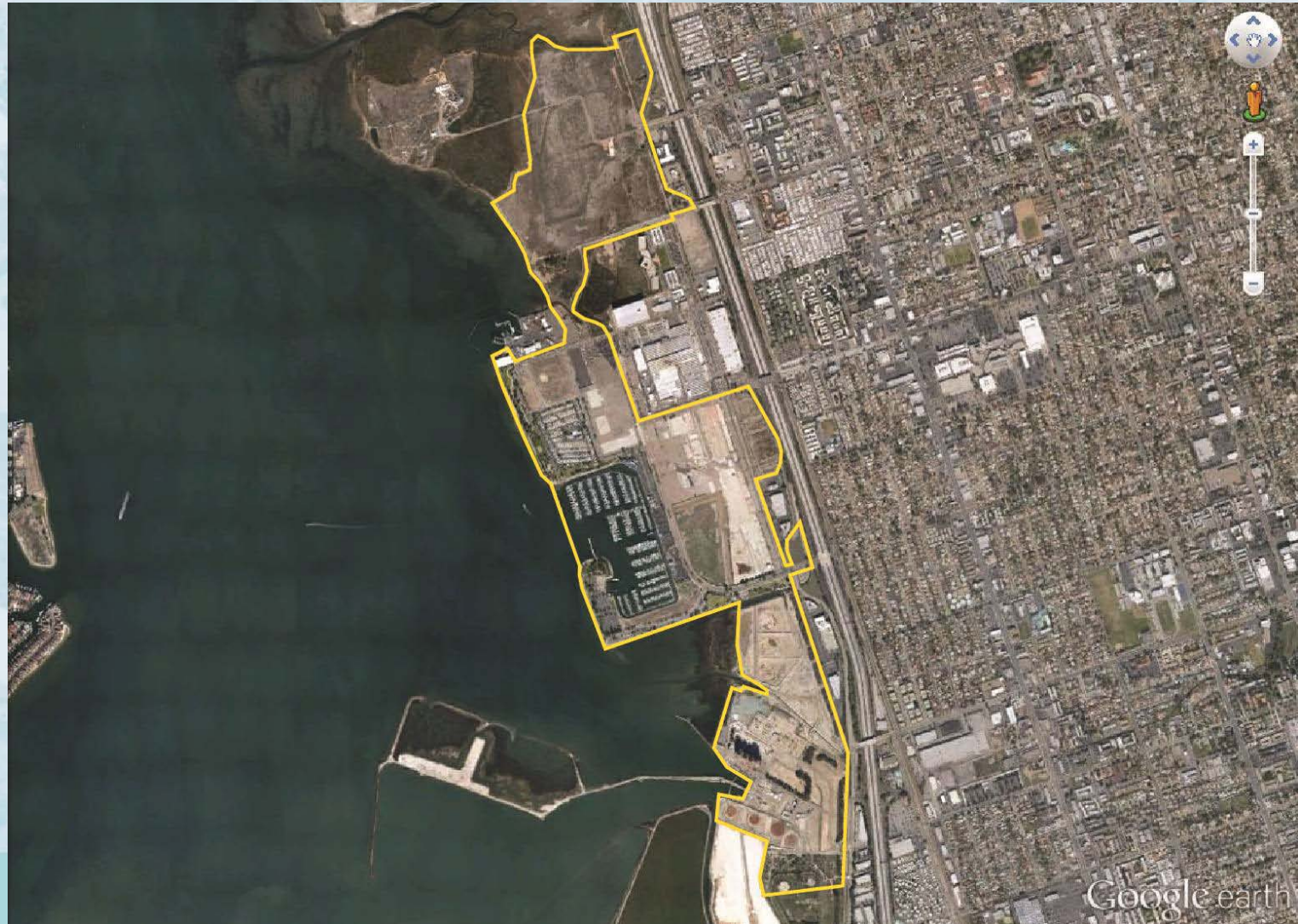
Inner Harbor Specific Plan Task Force



Brooklyn Basin, Oakland CA

- 64 acres
- Former uses: shipping terminal, storage, sand + gravel business
- Planned program (commencing 2014):
 - Mixed-use: residential (ca. 3,000 units) + retail (ca. 200,000 s.f.) w/structured parking
 - Parks and open space – ca. 30 acres
 - Two renovated marinas
- Notable: site needs clean-up + remediation; plan includes wetland restoration

Chula Vista Bayfront, Chula Vista CA



Inner Harbor Specific Plan Task Force



Chula Vista Bayfront, Chula Vista CA



Chula Vista Bayfront, Chula Vista CA



Chula Vista Bayfront, Chula Vista CA



Chula Vista Bayfront, Chula Vista CA



Inner Harbor Specific Plan Task Force



Chula Vista Bayfront, Chula Vista CA

- 535 acres
- Former uses: industrial, power plant, RV park, marina
- Planned program – mixed-use residential, entertainment, and open space:
 - Commercial, residential, office, industrial business parks
 - Hotel, conference center, RV park/campground
 - Reconfigure marina, improve commercial harbor + channel
- Notable: 40% of land for parks, open space, + habitat protection/restoration

Waterfront District, Bellingham WA



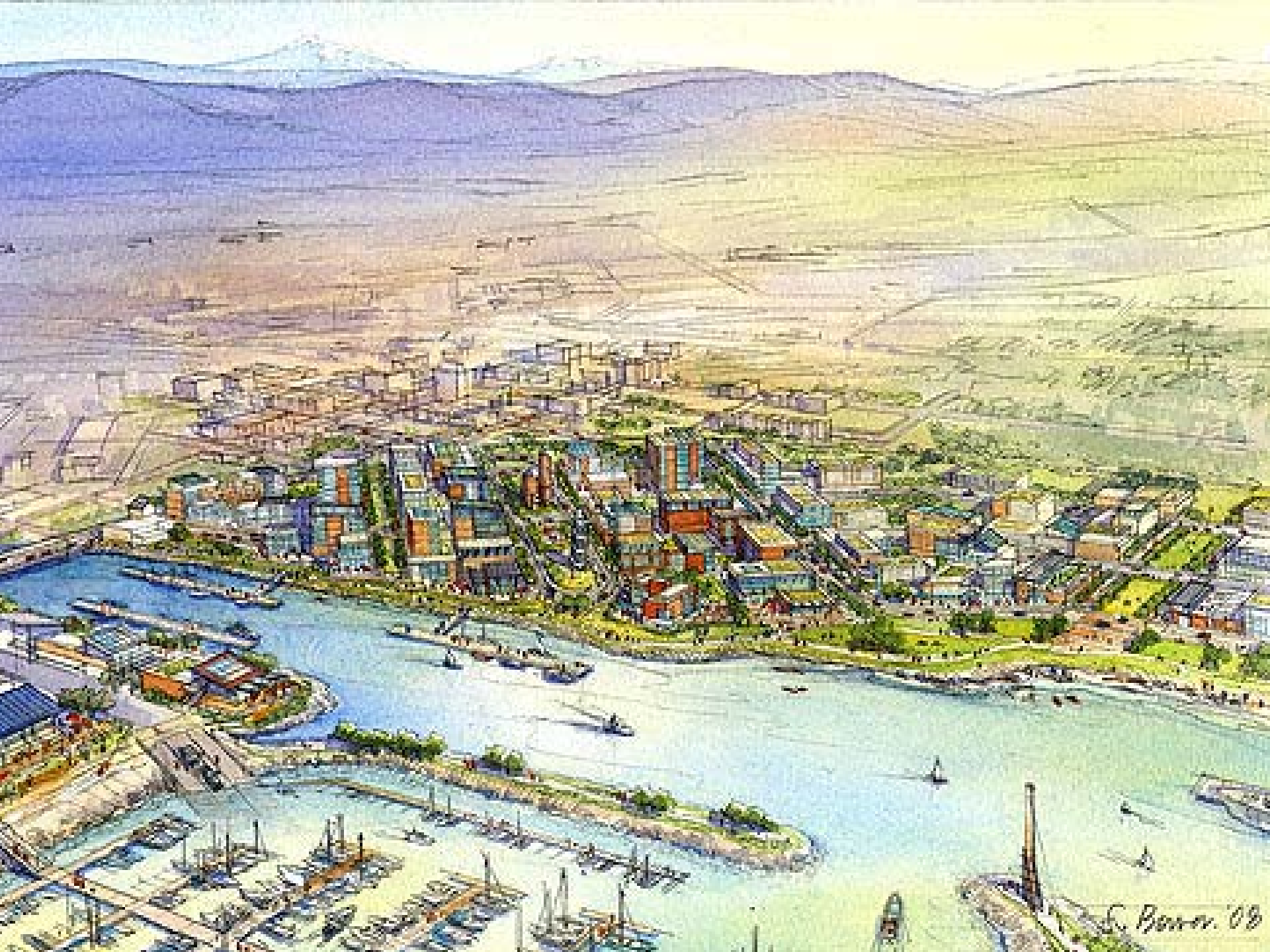
Inner Harbor Specific Plan Task Force











S. Power '08

Waterfront District, Bellingham WA

- 237 acres
- Former uses: industrial, including pulp + timber mill, chemical plant
- Planned program – three mixed-use zones:
 - Commercial (residential, commercial, office, public access)
 - Industrial (marine trades, light industrial)
 - Institutional (higher ed. + research; complementary uses)
- Notable: remediation needed; plan to restore shoreline habitat for salmon; possible re-use of historic structures

Napa, CA



Inner Harbor Specific Plan Task Force



Napa, CA



Inner Harbor Specific Plan Task Force





Inner Harbor Specific Plan Task Force



Petaluma, CA



Inner Harbor Specific Plan Task Force



1st and F St looking north



reet



1st Street

© 2013 Google
© 2013 Google

Google earth

38°14'02.03" N 122°38'10.08" W elev 80 ft eye alt 50 ft

Inner Harbor Specific Plan Task Force





Inner Harbor Specific Plan Task Force





Redwood City

Inner Harbor Specific Plan

Task Force Meeting

#2

July 9, 2013

