

# My Walking Tour of Ijburg

Amsterdam, NE

April 2013

- Billion dollar expansion of Amsterdam
- The first time Amsterdam has built outside of its world famous levees
- Featured in Discover Channel documentary (view on YouTube  
<http://www.youtube.com/watch?v=S6qR4ykGcR8>)
- 18,000 new homes above sea level
- Situated on some of the largest man-made islands covering 2 square miles



N

IJmee

IJburg West, Amsterdam, The Netherlands

Amsterdam

De Pijp

© 2013 Google

Image © 2013 Aerodata International Surveys

Google earth

Imagery Date: 5/7/2008 52°21'32.57" N 4°58'47.13" E elev 1 ft eye alt 46213 ft

E35

N

Jan Olphert Vaillantlaan  
Cornelis Zillesenlaan

Edmond Halleylaan

Ergermeerkade

Schokker Jachtolijk

IJburglaan

Gas Oorthuyskade

IJburg West

Bert Haanstrakade

IJburgbaai

D'emerzeedijk

Paulusstraat  
Talbotstraat

© 2013 Google

Image © 2013 Aerodata International Surveys

Google earth

Imagery Date: 5/7/2008 52°21'39.51" N 4°59'17.38" E elev 0 ft eye alt 5714 ft



Tram 26 along Ijburglaan at Steigerland  
(on the way to Ijburg)



Walkway along Haringbuisdijk  
Landbased "townhomes"  
Floating Homes on far right



Walkway along Haringbuisdijk  
View of Floating Homes  
(featured on Discovery Channel)



Walkway along Haringbuisdijk  
View of Floating Homes (1st Generation)



Walkway along Haringbuisdijk  
View of 1st Generation Floating Homes



Walkway along Haringbuisdijk  
View of 2nd Generation Floating Homes



Walkway along Haringbuisdijk  
View of 2nd Generation Floating Homes  
(Land-based townhomes in rear)



Walkway along Haringbuisdijk  
View of 2nd Generation Floating Homes  
(Land-based townhomes in rear on left)



Walkway along Haringbuisdijk  
View of 2nd Generation Floating Homes



Walkway along Haringbuisdijk  
View of 2nd Generation Floating Homes



Walkway along Haringbuisdijk  
View of 2nd Generation Floating Homes



View from Brigantijnkade  
2nd Generation Floating Home Neighborhood



View from Brigantijnkade  
2nd Generation Floating Home Neighborhood



View from "Sidewalk" (pier)  
2nd Generation Floating Home Neighborhood



View from Brigantijnkade  
2nd Generation Floating Home  
Neighborhood



View from Brigantijnkade  
2nd Generation Floating Home Neighborhood



View from Brigantijnkade  
2nd Generation Floating Home Neighborhood (Pier 2)



16

B



Note "basement" windows in concrete hull



Note "basement" windows in concrete hull  
Pilings secure floating home into slip



Note variety of design, color, and material



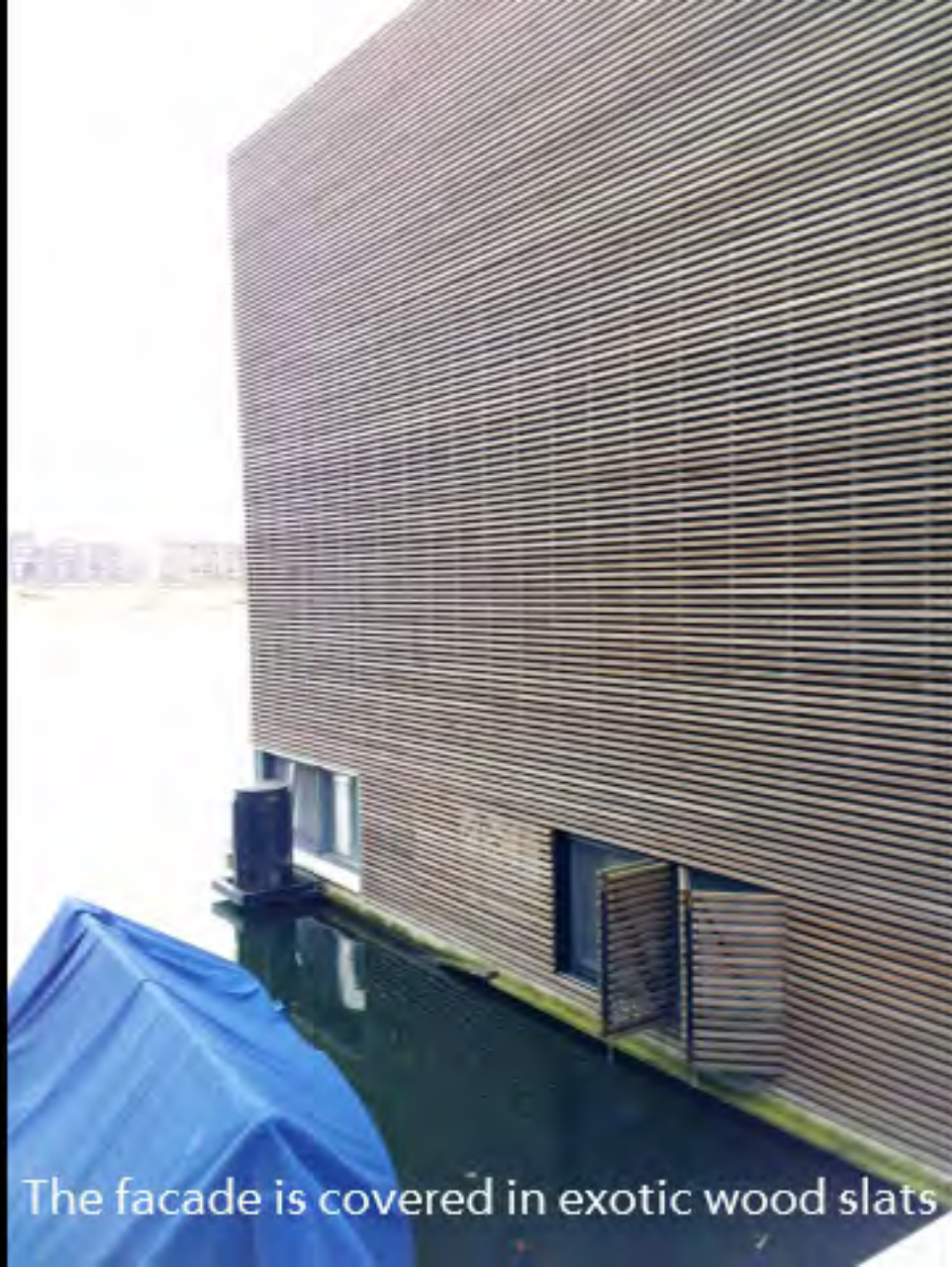




A neighborhood "street" (Pier 3)

72





The facade is covered in exotic wood slats





Surface material for this facade is polished alloy (?) with rounded corners!

Note "personalization of each home" through variety of color, material, and design -- using relatively the same hull design.























Townhomes on landside of Brigantijnkade  
(across road from 2nd generation floating homes)

Note that design is aesthetically consistent  
with modern Dutch architectural style.



BRIGANTIJKADE  
2018



View from Steigerland out to IJ-meer  
Rear side of townhomes

# FINALE KANSI! LAATSTE PRIJSVERLAGING

BEL NU! 020 - 626 53 61



het  
Steigereiland  
noord



## DIJKWONINGEN

OUDE PRIJS € 399.000,- v.o.n.

NIEUWE V.A. PRIJS

€ 339.000,-

vrij op naam

(ortpacht jaarlijkse canon)

## FINALE ACTIE

GELDIG TOT

# 1 MEI

AANSTAANDE

[WWW.HETSTEIGEREILANDNOORD.NL](http://WWW.HETSTEIGEREILANDNOORD.NL)

Pricing for new townhomes  
(~ 440,000USD)



Modern bridge to Zeeburg and Amsterdam

# What Insights Apply to Redwood City's Inner Harbor?

## ▶ **Be bold**

- We don't have to do the expected (i.e., build more levees, townhomes)
- Innovative design of waterfront community with public access to water (not private marina)
- Create a leading edge industry if you have to (e.g., design and construction of floating structures)

## ▶ **Public and people-powered transit connection** between city center and water's edge

- Easy access to the buzz of city life ↔ Tranquility of life on/near the water

## ▶ **Architectural design is distinctive yet cohesive**

- 1<sup>st</sup> Generation design is very consistent with architectural style of Dutch suburbs
- Homeowners can create distinctive abodes while working within similar "footprints" (hull size and slip width)
- Neighborhoods with land- and water-based "streets"
- Floating "back yards" and outdoor spaces

## ▶ **Adaptive architecture**

- Flow-through land-based structures
- Floating homes and commercial businesses
- Pier systems that can adapt to sea level rise