



Redwood City

Inner Harbor Specific Plan

Task Force Meeting

#4

October 22, 2013



Agenda

- Welcome and Summary
- Public Comment
- City Updates
- Task Force Member Updates
- Decision Making Criteria
- Next Steps



Redwood City Inner Harbor
Specific Plan Area

Public Comment

Inner Harbor Specific Plan Task Force



City Updates

- Malibu Grande Prix – Sold
- Highway 101/84 Interchange – Study
- Bair Island Aquatic Center – City – Grant
- San Mateo County Replacement Jail

Bair Island Aquatic Center and City Grant Project

Aerial View of BIAC



San Mateo County Replacement Jail



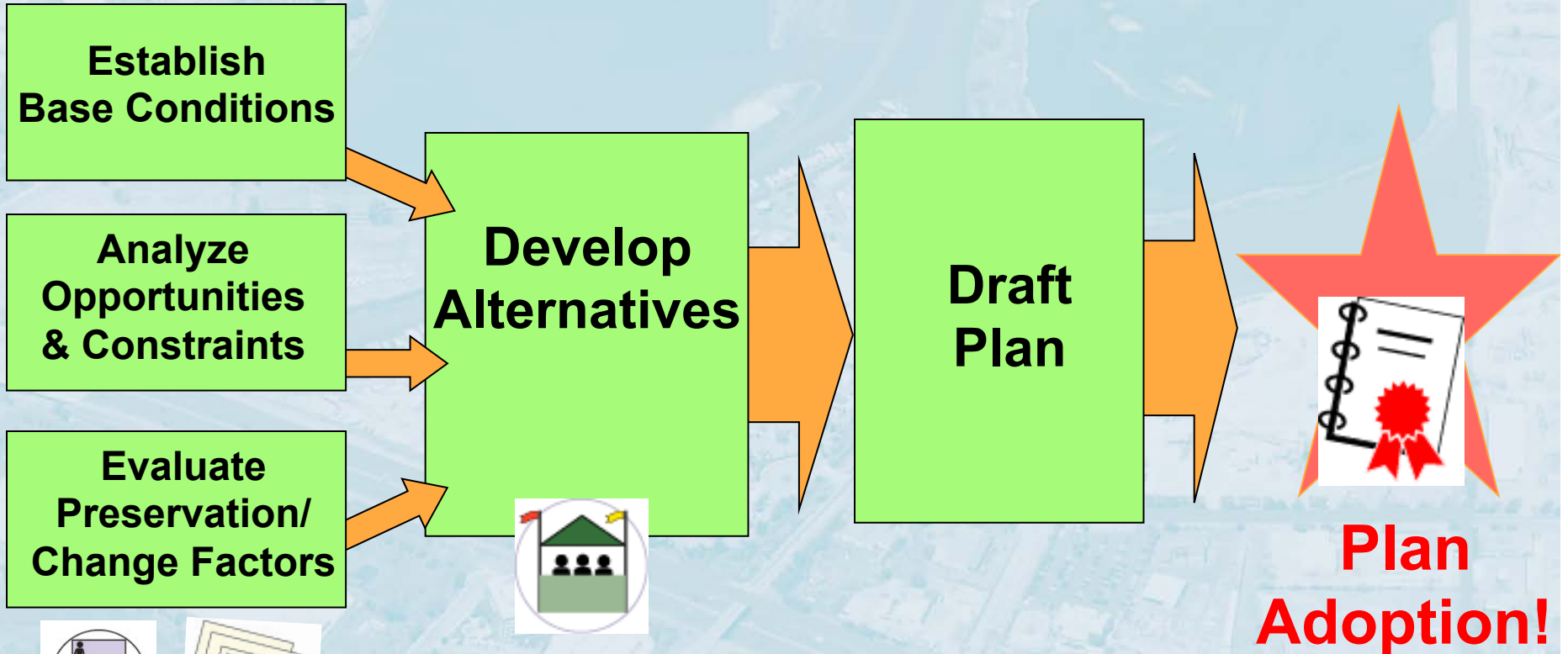
An aerial photograph of a city, likely San Francisco, showing a large body of water (the lake) in the upper right, a highway (the Golden Gate Bridge area) in the lower left, and various city buildings and streets. The image is overlaid with a semi-transparent blue filter.

Task Force Member Updates

Guiding Principles

- Planning Process
- General Plan Context
- Baseline Studies – preliminary findings
- Downtown Precise Plan Example
- Task Force Members' Presentations

Planning Process



General Plan Context – Land Use Designations

Public Facility

Industrial - Light

Mixed Use Waterfront

Open Space – Preservation

Open Space – San Francisco Bay



General Plan Context – Building Community Element

Examples:

- Goal BC-1: Provide **3.0 acres of park space for every 1,000 residents**. (City-wide currently, about 2.42 acres/1,000)
- Policy BC-3.1: Incorporate **flexible design characteristics**... Consider incorporating education with recreation opportunities.
- Program BC-9: **Redwood Creek Boat Access**

General Plan Context – Public Safety

Examples:

- Goal PS-2: Minimize the potential impacts from land uses that may pollute proximate to *sensitive receptors*.
- Goal PS-5: Mitigate against and *adapt to climate change*.

General Plan Context

- Housing Element
- Natural Resources Element

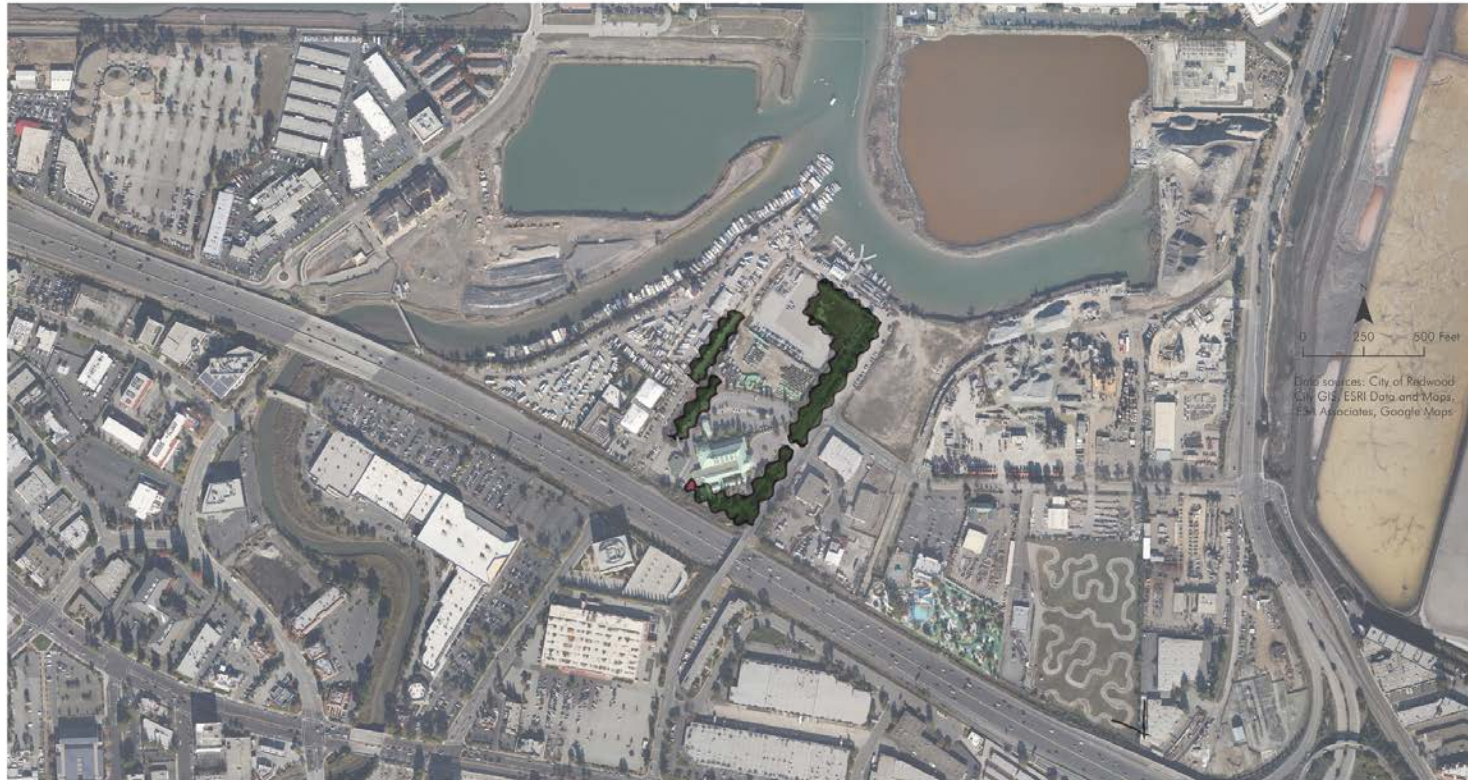
Cultural Resources

- No recorded Prehistoric sites within the Plan Area
- Oldest structure on site is the water tank
- Unrecorded resources maybe below surface



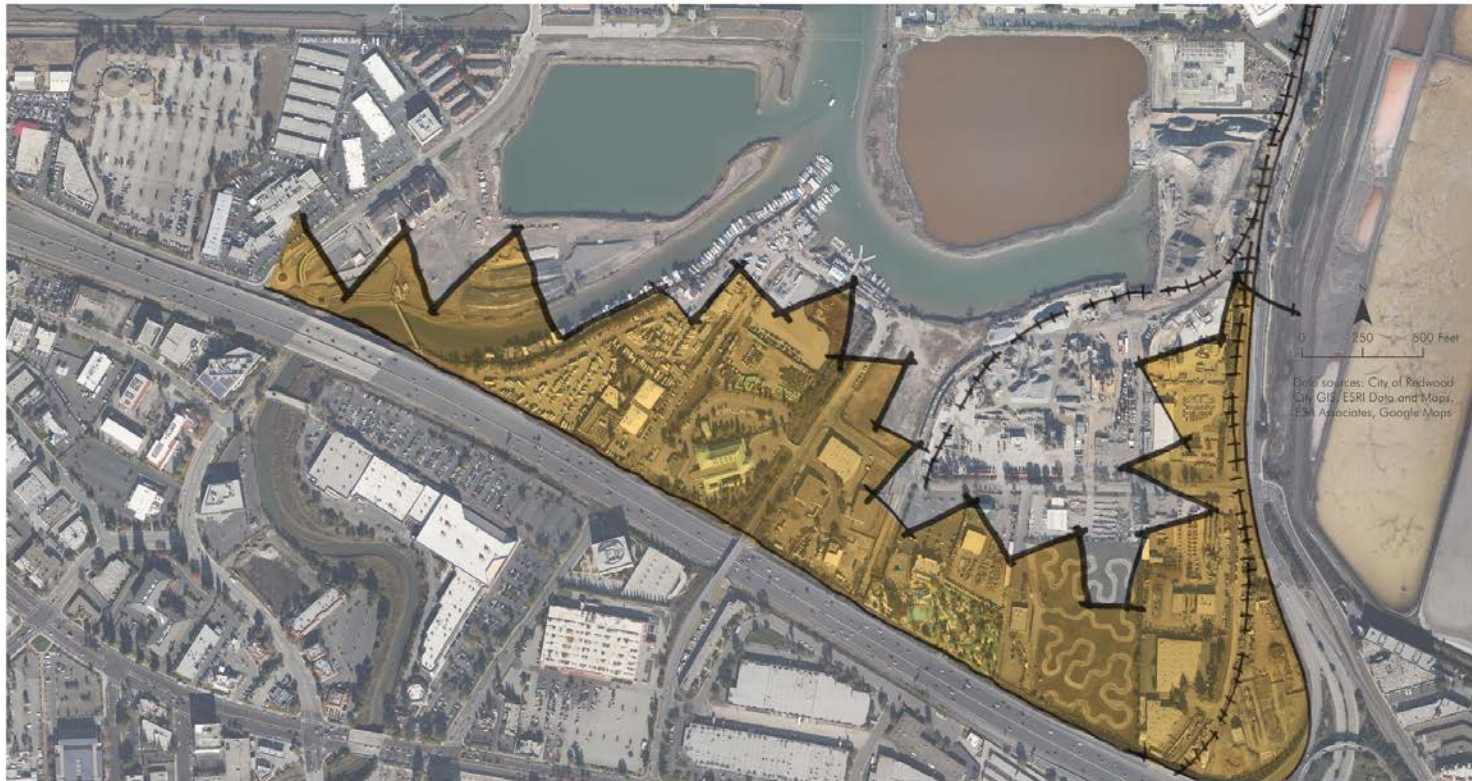
Wetlands

- Army Corps Section 404 Permit Areas
- Requires agency approval if development is proposed on or adjacent to Permit Areas
- Portions were created as mitigation for Police Facility
- Protection of habitat and species is required



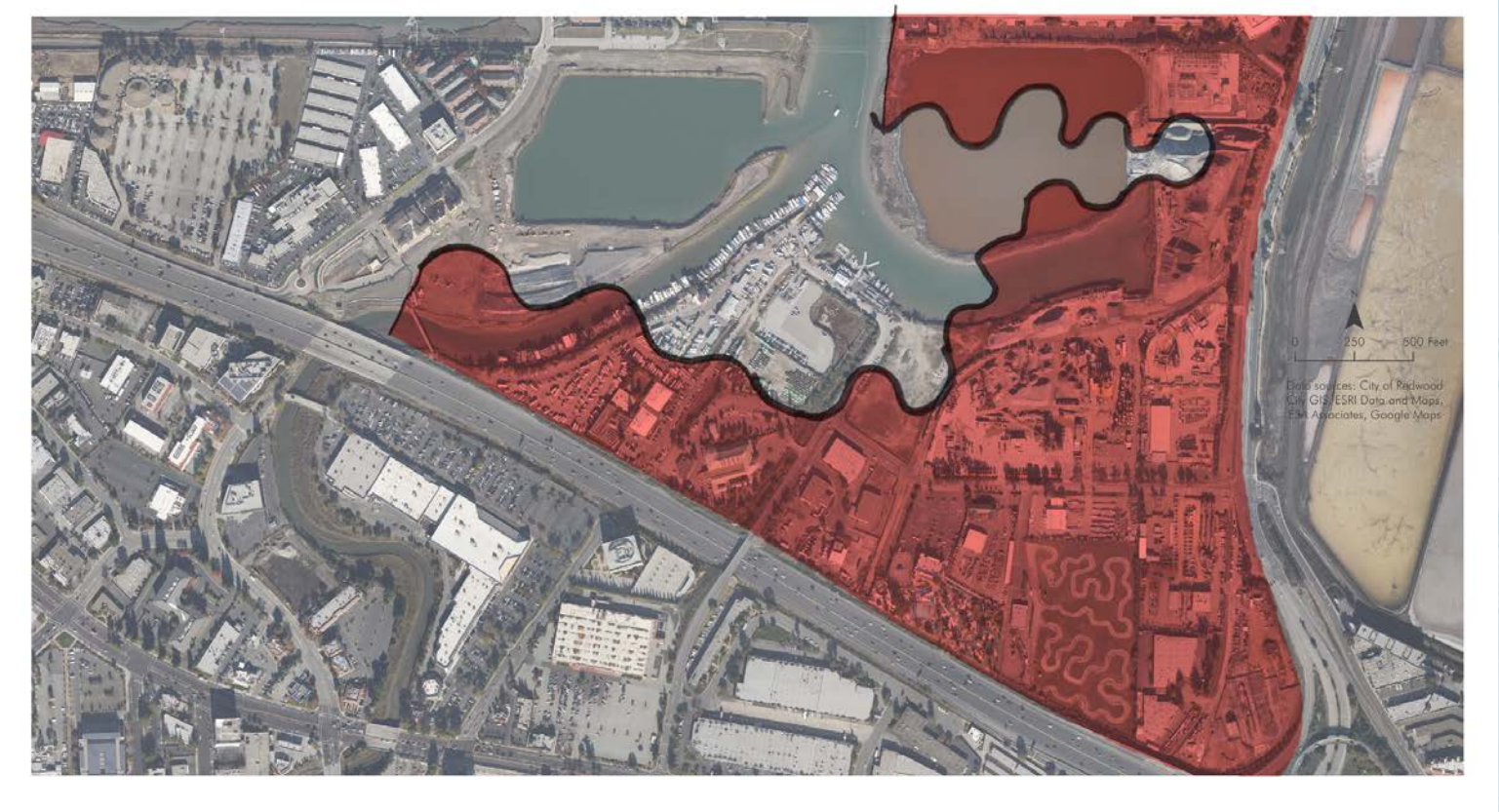
Acoustic Contours

- Exhibit maps 70 dBA contour
- Major source is vehicular traffic on Hwy 101
- Residential uses should be located away from Hwy 101
- Potential mitigation with building site and material selection

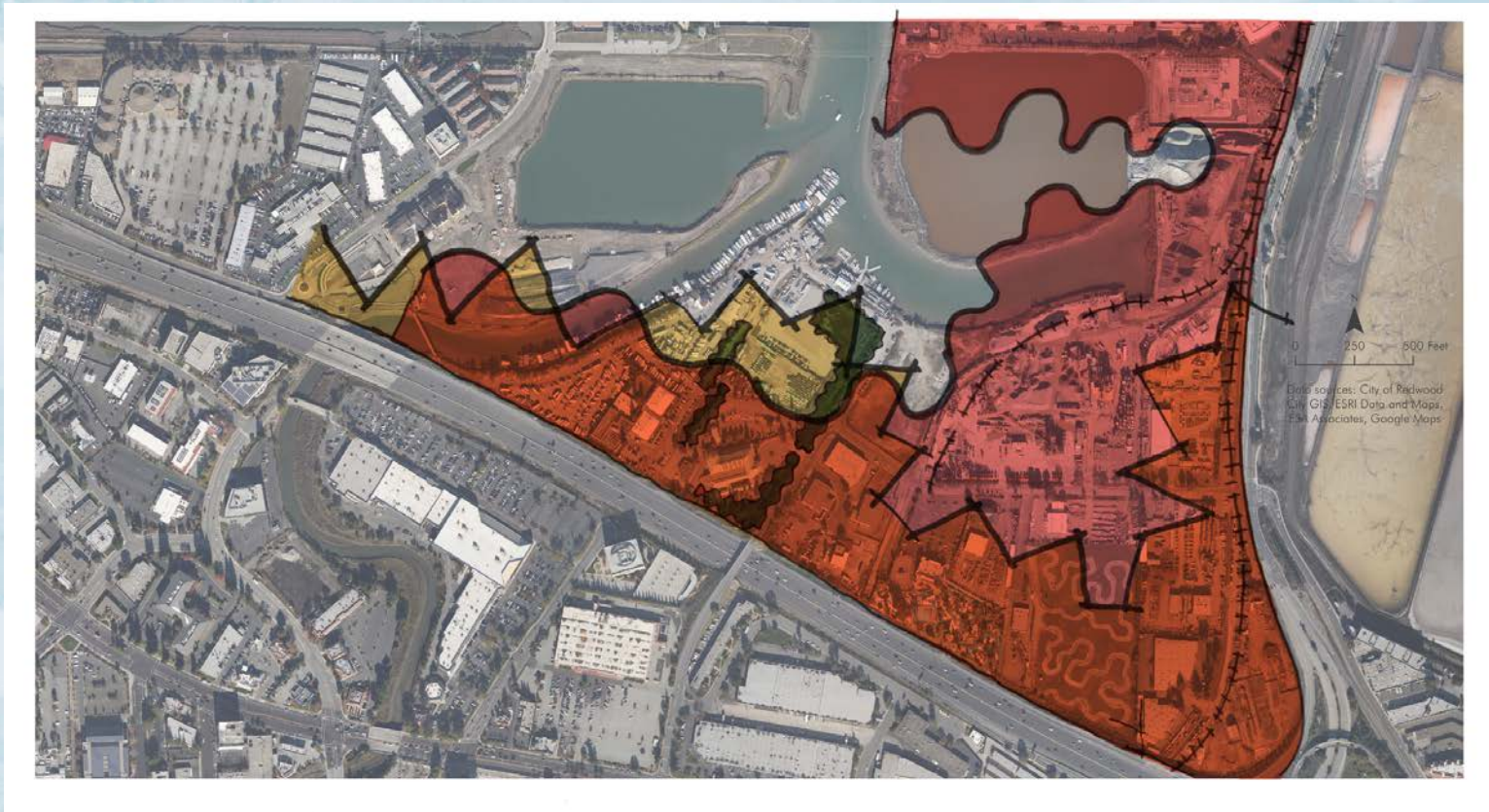


Air Quality

- Impacts from adjacent land uses and activities
- Low impacts on open spaces and recreational use
- Affected by wind patterns and local climate



Combined Environmental Factors



Inner Harbor Specific Plan Task Force



Sea Level Rise

- Entire study area will be affected above and below grade
- Periodic flooding currently occurring in low lying areas
- Potential combined flooding with Redwood Creek
- Existing storm water infrastructure is not designed to withstand periodic flooding

Today



Mid Century (11 inches)



End of Century (36 inches)



Downtown Precise Plan: Goals and Guiding Principles

- A. Revive Downtown by creating a beautiful and memorable urban district interwoven with the City's identity.
- B. Actively encourage and promote the preservation of Redwood City's historic resources, and reduce the deferral of judgment on how to preserve them as much as possible.

Downtown Precise Plan: Goals and Guiding Principles

- C. Create a network of great public open spaces.
- D. Provide the choice of “convenience living.”
- E. Create *the* entertainment center of the Peninsula.
- F. Create a strong employment district and “vital center.”

Downtown Precise Plan: Goals and Guiding Principles

G. Make pedestrians the priority.

H. Integrate transit and bicycle use.

I. Provide “just enough” parking and create a “park-once and walk” district.

Task Force Members' Presentations

- Achieve balance: restoration, recreation, development
- Connect to Downtown, but make distinct from Downtown
- Incorporate adaptive development
- Consider a floating community: living and/or working on the water

Task Force Members' Presentations

- Relate to history: protect resources, celebrate heritage
- Improve waterways: protect and enhance
- Include places for people, pets, and wildlife
- Create water contact and connection: visual and physical

Task Force Members' Presentations

- Provide green, open, play, active and quiet spaces
- Encourage water-oriented recreation: paddle, row, sail, stroll, sports, fishing, etc.
- Incorporate views: water, Port, western hills, industry

Task Force Members' Presentations

- Consider attractions: markets, music, recreation, food for tourists and residents
- Support mobility and accessibility for all modes and abilities
- Provide for full range of safety and infrastructure needs: dredging, lighting, recycling facilities

Next Steps

- Next Meeting: November 12, 2013
- Homework
 - Baseline Studies
 - Guiding Principles
 - Redwood City General Plan
 - Task Force Members Presentations



Redwood City

Inner Harbor Specific Plan

Task Force Meeting

#4

October 22, 2013

