



Redwood City

Inner Harbor Specific Plan

Task Force Meeting #8

March 11, 2014



AGENDA

7:00	Welcome/Housekeeping	Laura Stetson
7:05	Public Comment	
7:20	Presentations	BIAC 101/84 Interchange InnVision Shelter Network Redwood City Update
7:35	Revised Guiding Principles Review/Approval	Laura Stetson
8:00	Framework for Developing and Selecting Alternatives <ul style="list-style-type: none">• General Plan• Guiding Principles• Approach to Addressing Sea Level Rise• Circulation Objectives/Options• Property Boundaries• Land Use Mix• Property Owners' Presentations• Workshop Summary	Laura Stetson Rick Barrett
9:25	Next Steps: Task Force Meeting #9 March 25, 2014	Laura Stetson

An aerial photograph of a city, likely Redwood City, California, showing a large lake in the center, a highway (likely I-880) running through the lower left, and various residential and commercial buildings. The image is overlaid with a semi-transparent blue filter.

Public Comments

Task Force Meeting #8



Presentations

BIAC

101/84 Interchange

InnVision Shelter Network

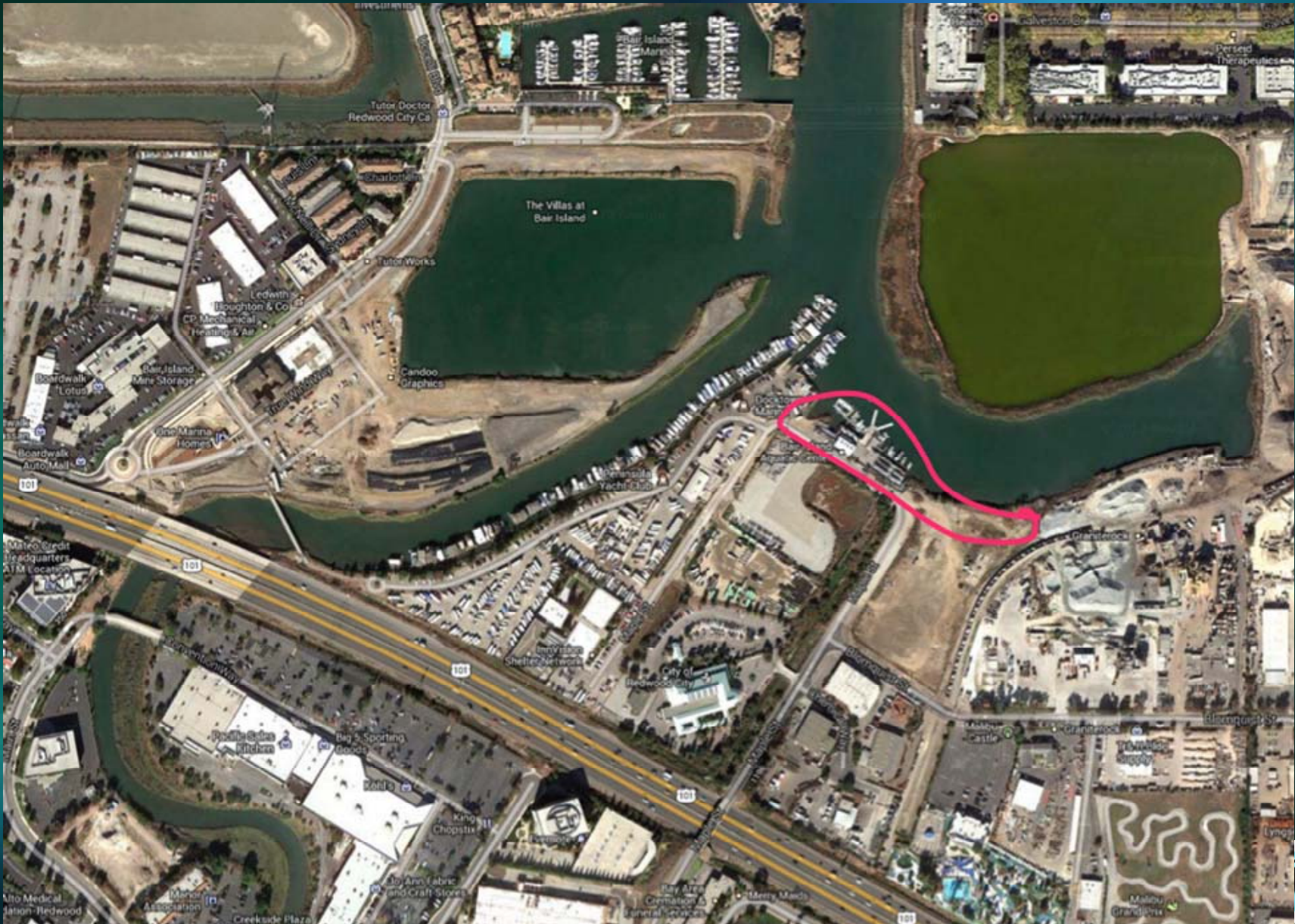
City of Redwood City Update

Bair Island Aquatic Center
1450 Maple St, Redwood City, California



www.GoBair.org

BIAC Location



BIAC Footprint



500 Members
4 major sports:
Rowing,
Sculling,
Paddling,
Dragon Boats

Rowing



- Team Sport
- Youth Teams: NORCAL (grades 6-12), Serra High School (130 kids)
- Adult (Masters) Team rowing (90 members)
- Early Morning and after school



Sculling

- 100 adults - not on teams
- Singles, Doubles, Quads
 - Lifelong Sport - 70+ year old scullers!
 - Council member, Planning Commissioner, Director of Port are active scullers!
- Primarily Morning



Paddling

- 35 Active Members
- Outrigger Canoes (1, 2, 3 and 6 people)
- Surfskis (narrow kayaks)
- Future: Stand up Paddle Boards



- Program with Parks and Recreation: SAFE (Sequoia) and After School Sports Fall and Spring (20 students/session)
- Working with Parks and Recreation for additional low fee paddling programs for juniors

Dragon Boating

- 150 Active participants
- Dragonboaters on teams in 20 person boats
- High School, college, adult teams
- Free for kids



Busy Boat House!



- VERY busy 5am to 9am most days; weekend busy Saturday and Sunday.
- Strong desire to add programs -
 - Adding new adaptive rowing program
- Desire for additional public access, separate from teams and private boats
 - Joint partnership with Parks and Recreation to add a new "Public Paddler's Dock" - on hold
- Requests from public for more kayak and paddle board opportunities



Connection
with the
Wildlife, Bair
Islands and
the Bay

What we believe is needed...

- **Recreation Destination**
- Water Access – SF Bay Area Water Trail - rowing, paddling, dragon boats, kayak rental, paddleboards - including adaptive
- Hiking, Walking, Biking - Bay Trail access
- Outdoor playing fields
- Gym - basketball, indoor soccer, gymnastics
- Facilities - showers, parking, storage, meeting rooms (food/drink)
- Fitness Center
- BMX park

A Plan



Thank You

- Bair Island Aquatic Center
- 1450 Maple Street
- A 501c3 Non-Profit



www.GoBair.org



Highway 101/84 Interchange

Task Force Meeting #8



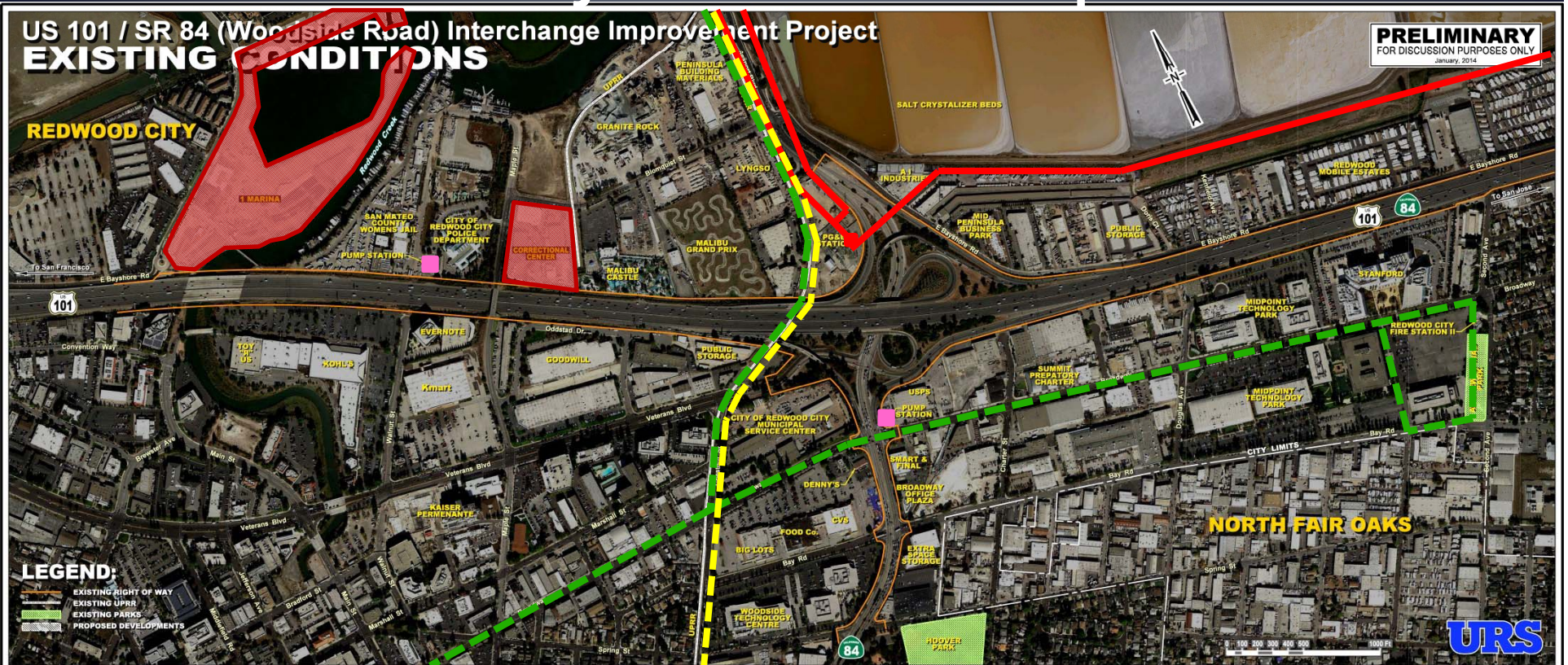
US Route 101 / SR 84 (Woodside Road) Interchange Improvement Project
Project Approval & Environmental Documentation (PA&ED) Phase

Inner Harbor Task Force
Project Overview Presentation

March 11, 2014



Project Area Map



Existing Interchange Configuration

Developed Area

- Hospitals, Commercial, Residential, Industrial, & Public Facilities

Major Utilities

- PG&E High Voltage Transmission Lines
- Pump Stations

UPRR

Under Construction

- One Marina
- Correctional Center

Future Public Improvements

- Trolley Corridor

Project Overview/Purpose & Need

The purpose of the proposed project is to:

- Alleviate existing and projected peak hour traffic congestion at the Route 101 / 84 (Woodside Road) Interchange,
- Provide traffic improvements near the interchange,
- Enhance mobility,
- Enhance Public safety, and
- Improve traffic operations at the intersections of Seaport / Blomquist - East Bayshore, Woodside Road / Veterans Boulevard, Woodside Road / Broadway Avenue, and Woodside Road / Bay Road.



Community Outreach Schedule

- | Focus | Focus | Focus | Focus |
|---------------------------|-----------------------------|---------------------------------|--------------------------------|
| ◊ Introduction / Overview | ◊ Alternatives Presentation | ◊ Alternatives Analysis Results | ◊ Alternatives Analysis Update |
| ◊ Purpose & Schedule | ◊ Updated Project Info | ◊ Narrowing of Alternatives | |
| ◊ Existing Conditions | ◊ Alternatives Feedback | ◊ Feedback | |
| ◊ Gather Input | ◊ Environmental Scoping | | |



Legend:

- CS** Community Stakeholder Meetings (20)
- CM** Community Meetings (3)
- CSS** Council Study Sessions (4)
- ENV** Environmental Meeting (2)



Community Open House Meeting

WHEN: Monday, March 31st 6:30-8:00 pm

Presentations on the half hour (6:30 p.m., 7:00 p.m. and 7:30 p.m.), with interactive stations available throughout the evening. Community members are encouraged to drop in at a time convenient to them. The presentation will cover the same content each time.

**WHERE: Downtown Library Community Room
Third Floor, 1044 Middlefield Road, Redwood City**





Draft Guiding Principles

Task Force Meeting #8



Overarching Themes

- Connect Redwood City to the water's edge.
- Create a unique and vibrant neighborhood destination on the bay.
- Value and enhance the natural environment.
- Serve as a regional model for waterfront communities and adaptation to sea level rise.
- Celebrate and preserve Redwood City's heritage.

Draft Guiding Principles

1. Accommodate a mix of habitat, recreational, educational, residential, and commercial uses in the Inner Harbor.
2. Create a day/night environment that is safe and enjoyable for residents, employees, and visitors.
3. Develop strong visual and circulation linkages from Downtown and other areas into the Inner Harbor.
4. Prioritize use of the waterfront for public-oriented and water-dependent uses and activities.

Draft Guiding Principles

5. Provide recreation and open space amenities in the Inner Harbor that support of the citywide adopted parkland standard.
6. Preserve existing and accommodate new floating communities.
7. Insist upon quality architecture, streetscapes, public place improvements, and other “placemaking” features that define the Inner Harbor.

Draft Guiding Principles

8. Respond creatively and appropriately to projected sea level rise. Include use of sustainable and adaptable approaches—such as floating walkways and floating structures—for land use and infrastructure improvements.
9. Promote recreational uses that accommodate human- and wind-powered watercraft.
10. Emphasize and enhance boater access to Redwood Creek and the Bay for recreation and educational purposes.

Draft Guiding Principles

11. Provide for new and improved pedestrian, bicycle, transit, and auto connections between the Inner Harbor and Downtown Redwood City, and between the Inner Harbor and adjacent developed areas along the Bay.
12. Complete the Bay Trail connection through the Inner Harbor.
13. Incorporate marine and freshwater wetlands areas within or near the Inner Harbor plan area as habitat and for education.

Draft Guiding Principles

14. Accommodate educational use amenities such as museum exhibits and hands-on learning labs that feature historic Redwood City and local flora/fauna/habitat.
15. Require private development to include community benefits—either on site or within the Inner Harbor—such as open space accessible to the public, recreation areas, trails, docks, water access, affordable housing, community services, and habitat, or as determined by the City Council.

Draft Guiding Principles

16. Incorporate historic features and references to City history into the overall composition of the Inner Harbor area, and into new buildings and public spaces.
17. Plan for land use and circulation compatibility with adjacent institutional, industrial, and port-dependent uses.

Sea Level Rise	Mobility	Development	Open Space/Recreation
<ul style="list-style-type: none"> ○ Adaptive retreat ○ Adaptive retreat/stepped seawall ○ Stepped seawall 	<ul style="list-style-type: none"> ○ Over Hwy 101 <ul style="list-style-type: none"> - Chestnut - Maple - Walnut - Creek - Main 	<ul style="list-style-type: none"> ○ Residential <ul style="list-style-type: none"> - Floating - Land-based ○ Retail/restaurant ○ Office ○ R&D ○ Hotel 	<ul style="list-style-type: none"> ○ Habitat ○ Passive ○ Active ○ Miniparks and plazas ○ Recreational trails ○ Sports fields ○ Water recreation
	<ul style="list-style-type: none"> ○ Bridge(s) over creek ○ Bay Trail ○ Blomquist route/function ○ Traffic calming ○ Water access ○ Boardwalk ○ Truck restrictions ○ Rail 	<ul style="list-style-type: none"> ○ Educational ○ Institutions/Civic uses 	



Maps

Task Force Meeting #8





**Sea Level Rise Strategies
Alternate A**

**Redwood City
Inner Harbor Specific Plan**

- Legend**
- Proposed Open Space
 - Civic & Institutional Use
 - Proposed Development Pad at 2' Above Sea Level
 - Mixed Use / Residential
 - Road Alignment
 - Study Area Boundary

Task Force Meeting Number 6
January, 2014










**Sea Level Rise Strategies
Alternate B**

**Redwood City
Inner Harbor Specific Plan**

Legend

-  Proposed Open Space
-  Civic & Institutional Use
-  Proposed Development Pad
10' Above Sea Level
-  Road Alignment
-  Study Area Boundary

Task Force Meeting Number 6
January, 2014





Sea Level Rise Strategies Alternate C

Redwood City Inner Harbor Specific Plan

Legend

- Proposed Open Space
- Civic & Institutional Use
- Proposed Development Pad
at 100 Year Sea Level
- Mixed Use / Residential
- Sea Wall with Fill
- Road Alignment
- Study Area Boundary

Task Force Meeting Number 6
January, 2014





Task Force Charrette Results

Task Force Meeting #8





TABLE 1:

Planning	Accessibility	Recreation
Where relocate floating community?	Pedestrian/bike access to Ferrari property.	Improve active recreational space.
Mindful of uses on Malibu Grand Prix property and traffic impacts.	Improve pedestrian/bike facilities on Maple and Walnut Streets.	Provide range of recreational options.
Develop mixed-use retail	Bay Trail link along edge of Granite Rock.	
Consider provisions of community benefits to balance impacts including aquatic centers and MSI	Additional pedestrian/bike connections across Redwood Creek to One Marina.	
BIAC should remain the same, incorporate MSI.	Bridge across slough.	
Park space a priority. Integrate wetlands into park.	Area along creek should be accessible to public.	



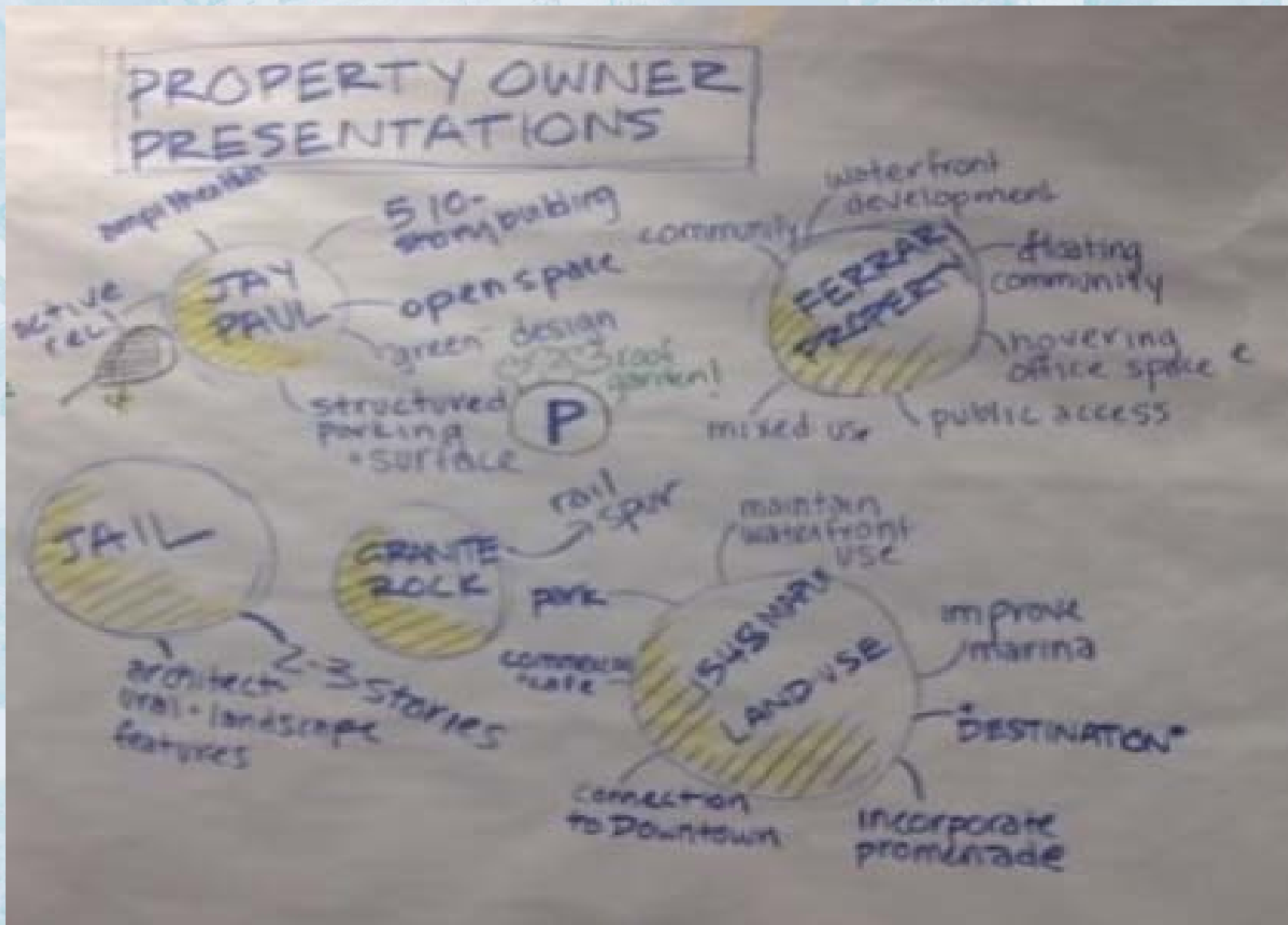
TABLE 2

Planning	Accessibility	Recreation
<p>Trails, bike connections, open space, and development are top priorities.</p> <p>Relocate floating homes – include in Ferrari property, consider water taxis.</p> <p>Consider industrial possibilities (medium to heavy industrial use).</p> <p>Potential for car dealerships?</p> <p>Create public benefits.</p>	<p>Walnut bridge key connection (via ferry) to IH</p> <p>Provide Bay Trail along the water's edge.</p> <p>Additional pedestrian/bike connections across Redwood Creek to One Marina.</p> <p>Incorporate pedestrian/bike facilities on Walnut Street</p>	<p>Plan for active recreation.</p>



TABLE 3

Planning	Accessibility	Recreation
<p>Visual connection from highway to Bay.</p> <p>Physical connection from Downtown to Bay.</p> <p>Plan for adaptive retreat from SLR: cost effective; no residential or multi-use developments.</p> <p>Committed to floating community, supply floating community with ancillary uses</p> <p>Development funds open space.</p> <p>Provide office or office incubator space.</p> <p>No housing on Malibu Grand Prix site.</p> <p>Create park with boat access.</p> <p>Ferrari property should be the only residential space.</p> <p>Maintain BIAC.</p> <p>All areas in "green space" (see map) are adaptive to SLR – potential floating amenities.</p>	<p>Public access is major priority.</p> <p>Create promenade along the creek.</p> <p>Improve Bay Trail connection across Redwood Creek.</p> <p>Create promenade connect planning area and Downtown.</p> <p>Do not extend Blonquist Street</p> <p>Improve pedestrian/bicycle facilities.</p>	<p>Mix of active and passive uses similar to .</p>





Redwood City

Inner Harbor Specific Plan

Task Force Meeting #8

March 11, 2014

