

NOTE  
 Topography taken from U.S.G.S. Quadrangles  
 "NEWARK 1947," "PALO ALTO 1953" and "REDWOOD  
 POINT 1948."

FILE NO. 19053 S.  
 FILED FOR RECORD AT THE REQUEST OF STATE  
 LANDS COMMISSION THIS 7TH DAY OF JANUARY, 1960  
 AT 17 MIN. PAST 10 A.M. IN VOL. 4 OF LICENSED LAND  
 SURVEYORS MAPS AT PAGES 69-70-71-72 AND 73  
 SAN MATEO COUNTY RECORDS.

*Paul Thirte*  
 COUNTY RECORDER.

INDEX TO PLATS OF THE  
**GRANT TO THE CITY OF REDWOOD CITY**  
 CHAPTER 34 STATUTES OF 1954 (1<sup>ST</sup> E.S.)  
 VICINITY OF REDWOOD CREEK  
 SAN MATEO COUNTY, CALIFORNIA

SCALE 1 INCH = 2000 FEET  
 SHEET 1 OF 5 MAY TO AUGUST 1958  
 W.W. KUNNECKE CIVIL ENG. TECHNICIAN F.D. UZES ASSISTANT CIVIL ENG.  
 C.D. ROBERTSON ASSOCIATE CIVIL ENG.

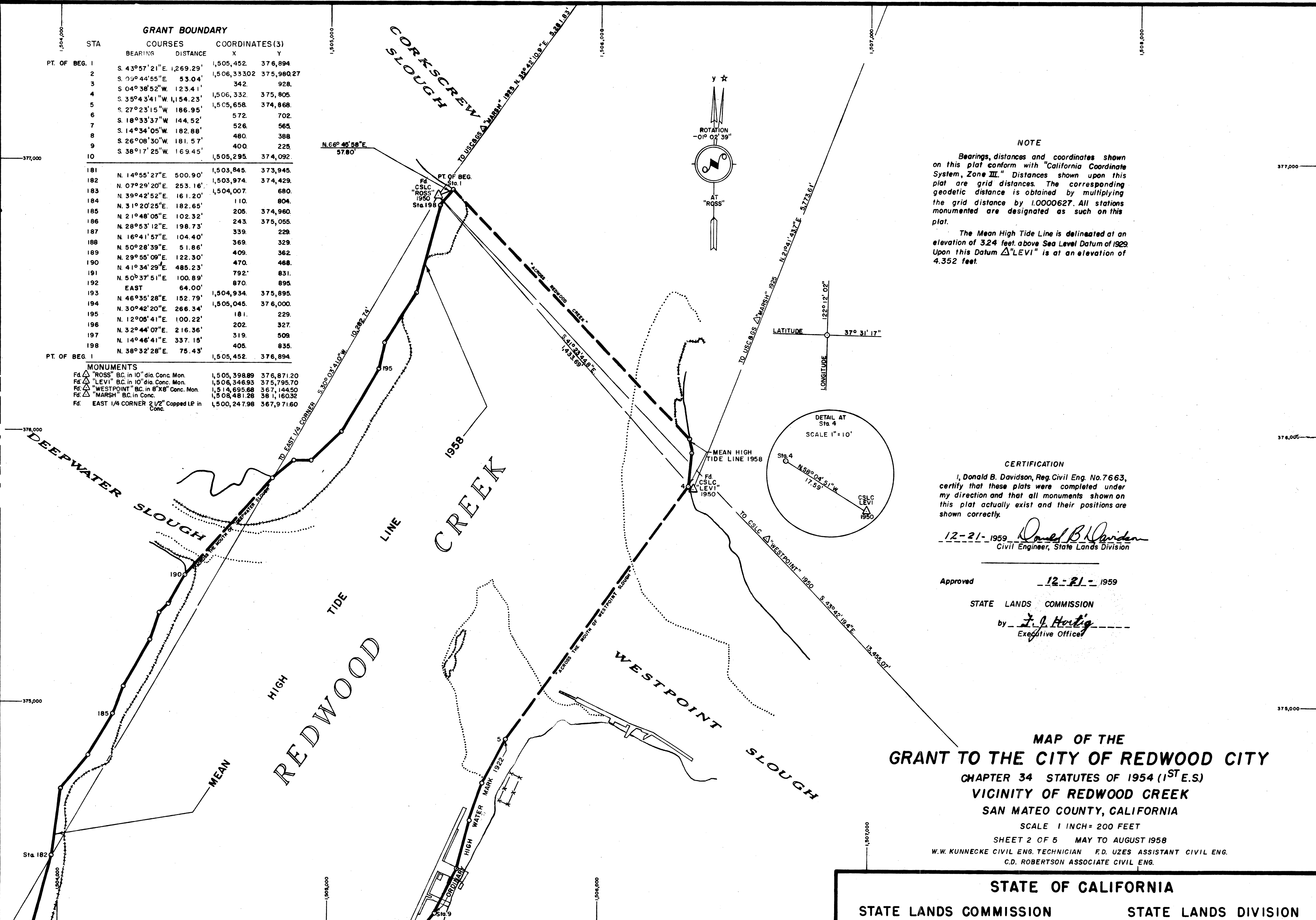
STATE OF CALIFORNIA  
 STATE LANDS COMMISSION STATE LANDS DIVISION

GRANT BOUNDARY

STA	COURSES	DISTANCE	COORDINATES (3)	
PT. OF BEG. 1	BEARING		X	Y
2	S. 43° 57' 21" E	1,269.29'	1,505,452	376,894
3	S. 09° 44' 55" E	53.04'	1,506,333.02	375,980.27
4	S. 04° 38' 52" W	123.41'	1,506,332	375,805
5	S. 35° 43' 41" W	1,154.23'	1,505,658	374,868
6	S. 27° 23' 15" W	186.95'	1,505,658	374,868
7	S. 18° 33' 37" W	144.52'	1,505,658	374,868
8	S. 14° 34' 05" W	182.88'	1,505,658	374,868
9	S. 26° 08' 30" W	181.57'	1,505,658	374,868
10	S. 38° 17' 25" W	169.45'	1,505,295	374,092
181	N. 14° 55' 27" E	500.90'	1,503,845	373,945
182	N. 07° 29' 20" E	253.16'	1,503,974	374,429
183	N. 39° 42' 52" E	161.20'	1,504,007	374,429
184	N. 31° 20' 25" E	182.65'	1,504,007	374,429
185	N. 21° 48' 05" E	102.32'	1,504,007	374,429
186	N. 28° 53' 12" E	198.73'	1,504,007	374,429
187	N. 16° 41' 57" E	104.40'	1,504,007	374,429
188	N. 50° 28' 39" E	51.86'	1,504,007	374,429
189	N. 29° 55' 09" E	122.30'	1,504,007	374,429
190	N. 41° 34' 29" E	485.23'	1,504,007	374,429
191	N. 50° 37' 51" E	100.89'	1,504,007	374,429
192	EAST	64.00'	1,504,007	374,429
193	N. 46° 35' 28" E	152.79'	1,504,934	375,895
194	N. 30° 42' 20" E	266.34'	1,505,045	376,000
195	N. 12° 05' 41" E	100.22'	1,505,045	376,000
196	N. 32° 44' 07" E	216.36'	1,505,045	376,000
197	N. 14° 46' 41" E	337.15'	1,505,045	376,000
198	N. 38° 32' 28" E	75.43'	1,505,045	376,000

MONUMENTS

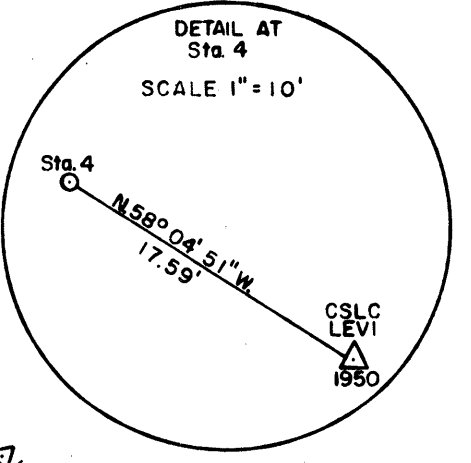
Fd. Δ "ROSS" BC in 10" dia Conc. Mon.	1,505,398.89	376,871.20
Fd. Δ "LEVI" BC in 10" dia Conc. Mon.	1,506,346.93	375,795.70
Fd. Δ "WESTPOINT" BC in 8" X 8" Conc. Mon.	1,514,695.68	367,144.50
Fd. Δ "MARSH" BC in Conc.	1,508,481.28	381,160.32
Fd. EAST 1/4 CORNER 2 1/2" Capped LP in Conc.	1,500,247.98	367,971.60



NOTE

Bearings, distances and coordinates shown on this plat conform with "California Coordinate System, Zone III." Distances shown upon this plat are grid distances. The corresponding geodetic distance is obtained by multiplying the grid distance by 1.0000627. All stations monumented are designated as such on this plat.

The Mean High Tide Line is delineated at an elevation of 3.24 feet above Sea Level Datum of 1929. Upon this Datum Δ "LEVI" is at an elevation of 4.352 feet.



CERTIFICATION

I, Donald B. Davidson, Reg. Civil Eng. No. 7663, certify that these plats were completed under my direction and that all monuments shown on this plat actually exist and their positions are shown correctly.

12-21-1959 *Donald B. Davidson*  
Civil Engineer, State Lands Division

Approved 12-21-1959

STATE LANDS COMMISSION

by *J. J. Hartig*  
Executive Officer

MAP OF THE  
GRANT TO THE CITY OF REDWOOD CITY  
CHAPTER 34 STATUTES OF 1954 (1<sup>ST</sup> E.S.)  
VICINITY OF REDWOOD CREEK  
SAN MATEO COUNTY, CALIFORNIA

SCALE 1 INCH = 200 FEET  
SHEET 2 OF 5 MAY TO AUGUST 1958  
W.W. KUNNECKE CIVIL ENG. TECHNICIAN F.D. UZES ASSISTANT CIVIL ENG.  
C.D. ROBERTSON ASSOCIATE CIVIL ENG.

STATE OF CALIFORNIA  
STATE LANDS COMMISSION STATE LANDS DIVISION

GRANT BOUNDARY

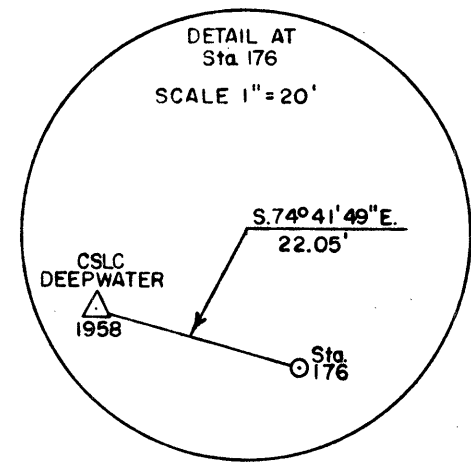
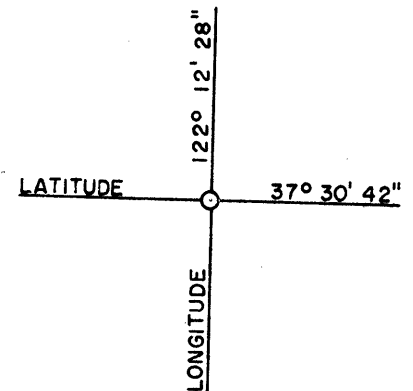
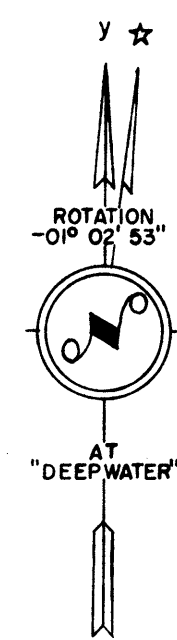
STA	COURSES		COORDINATES(3)	
	BEARING	DISTANCE	X	Y
8	S. 26° 08' 30" W.	181.57'	1,505,480.	374,388.
9	S. 38° 17' 25" W.	169.45'	400.	225.
10	S. 54° 46' 57" W.	208.09'	295.	374,092.
11	S. 41° 36' 36" W.	203.30'	1,505,125.	373,972.
12	S. 54° 36' 19" W.	139.85'	1,504,990.	820.
13	S. 43° 29' 05" W.	133.69'	876.	739.
14	S. 57° 01' 50" W.	264.61'	784.	642.
15	S. 55° 55' 42" W.	249.90'	562.	498.
16	S. 69° 37' 25" W.	112.01'	355.	358.
17	S. 74° 44' 42" W.	57.01'	250.	319.
18	S. 33° 01' 52" W.	96.80'	195.	304.
19	S. 33° 21' 59" W.	49.09'	142.	223.
20	S. 23° 11' 55" W.	68.54'	115.	182.
21	S. 08° 47' 07" W.	111.31'	088.	119.
22	S. 02° 00' 53" E.	199.12'	071.	373,009.
23	S. 07° 41' 46" W.	149.35'	078.	372,810.
24	S. 00° 50' 48" W.	203.02'	058.	662.
25	S. 11° 47' 36" W.	92.96'	055.	459.
26	S. 10° 03' 39" W.	251.87'	036.	368.
27	S. 02° 42' 37" E.	169.19'	1,503,992.	372,120.
28	S. 10° 51' 23" W.	148.66'	1,504,000.	371,951.
29	S. 15° 24' 44" W.	383.80'	1,503,972.	805.
30	S. 53° 34' 21" W.	1,010.43'	870.	371,435.
31			1,503,057.	370,835.

GRANT BOUNDARY

STA.	COURSES		COORDINATES(3)	
	BEARING	DISTANCE	X	Y
154	N. 68° 40' 32" E.	200.74'	1,501,586.	370,965.
155	N. 64° 41' 55" E.	304.18'	1,501,773.	371,038.
156	N. 53° 55' 50" E.	100.21'	1,502,048.	168.
157	N. 75° 08' 29" E.	50.69'	129.	227.
158	N. 61° 23' 22" E.	50.12'	178.	240.
159	N. 43° 29' 33" E.	53.76'	222.	264.
160	N. 77° 59' 19" E.	48.05'	259.	303.
161	N. 57° 23' 11" E.	339.54'	306.	313.
162	N. 69° 23' 58" E.	150.63'	592.	496.
163	N. 58° 50' 26" E.	100.50'	733.	549.
164	S. 89° 00' 44" E.	58.01'	819.	601.
165	N. 61° 46' 58" E.	46.53'	877.	600.
166	S. 80° 41' 24" E.	61.81'	918.	622.
167	N. 04° 27' 20" E.	77.23'	979.	612.
168	N. 68° 24' 33" E.	252.73'	1,502,985.	689.
169	N. 29° 03' 17" E.	113.25'	1,503,220.	782.
170	N. 07° 32' 42" E.	152.32'	275.	371,881.
171	N. 33° 23' 19" E.	52.70'	295.	372,032.
172	N. 19° 45' 22" E.	150.88'	324.	076.
173	N. 13° 45' 39" E.	201.79'	375.	218.
174	N. 06° 20' 25" W.	36.22'	423.	414.
175	N. 12° 25' 11" E.	455.66'	419.	450.
176	N. 01° 09' 26" E.	99.02'	517.	895.
177	N. 15° 12' 19" E.	202.07'	519.	372,994.
178	N. 20° 16' 26" E.	404.03'	572.	373,189.
179	N. 17° 02' 48" E.	300.19'	712.	568.
180	N. 26° 33' 54" E.	100.62'	800.	855.
181	N. 14° 55' 27" E.	500.90'	845.	373,945.
182			1,503,974.	374,429.

**MONUMENTS**  
 Set: Δ "DEEPWATER", BC in 9" Dia. Conc. Mon. 1,503,495.73 372,900.82  
 Mon.  
 Set: Δ "WHIPPLE", BC in 10" X 10" Conc. Mon. 1,497,588.36 367,517.46  
 Set: Δ "CHESTNUT", BC in 10" X 10" Conc. Mon. 1,503,166.66 364,727.82  
 Fd: "EAST 1/4 CORNER", 2 1/2" Capped I.P. in Conc. (Section 18) 1,500,247.98 367,971.60  
 Fd: Pk "6" Dia. Post With Copper Nail 1,505,334.05 372,365.09  
 Fd: Pk "6" 4x4 With Nail 8 Cu. Tg. RE 5597 1,505,165.73 372,433.31  
 Fd: Pk "H" 1,505,156.95 372,414.83  
 Fd: Pk "J" 10" Conc. Mon. W/Tag, R.E. #1829 1,505,145.41 372,811.61  
 Fd: Pk "K", Cut Cross in Conc. Pkgs. Lot 1,505,995.33 373,818.75  
 Mkd. N 00+00, W 00+00.

**NOTE**  
 Bearings, distances and coordinates shown on this plat conform with "California Coordinate System, Zone III." Distances shown upon this plat are grid distances. The corresponding geodetic distance is obtained by multiplying the grid distance by 1.000062. All stations monumented are designated as such on this plat.  
 The Mean High Tide Line is delineated at an elevation of 3.24 feet above Sea Level Datum of 1929. Upon this Datum Δ "DEEPWATER" is at an elevation of 5.772 feet.



**MAP OF THE  
 GRANT TO THE CITY OF REDWOOD CITY**  
 CHAPTER 34 STATUTES OF 1954 (1<sup>ST</sup> E.S.)  
 VICINITY OF REDWOOD CREEK  
 SAN MATEO COUNTY, CALIFORNIA  
 SCALE 1 INCH = 200 FEET  
 SHEET 3 OF 5 MAY TO AUGUST 1958  
 W.W. KUNNECKE CIVIL ENG. TECHNICIAN F.D. UZES ASSISTANT CIVIL ENG.  
 C.D. ROBERTSON ASSOCIATE CIVIL ENG.

**STATE OF CALIFORNIA**  
 STATE LANDS COMMISSION STATE LANDS DIVISION

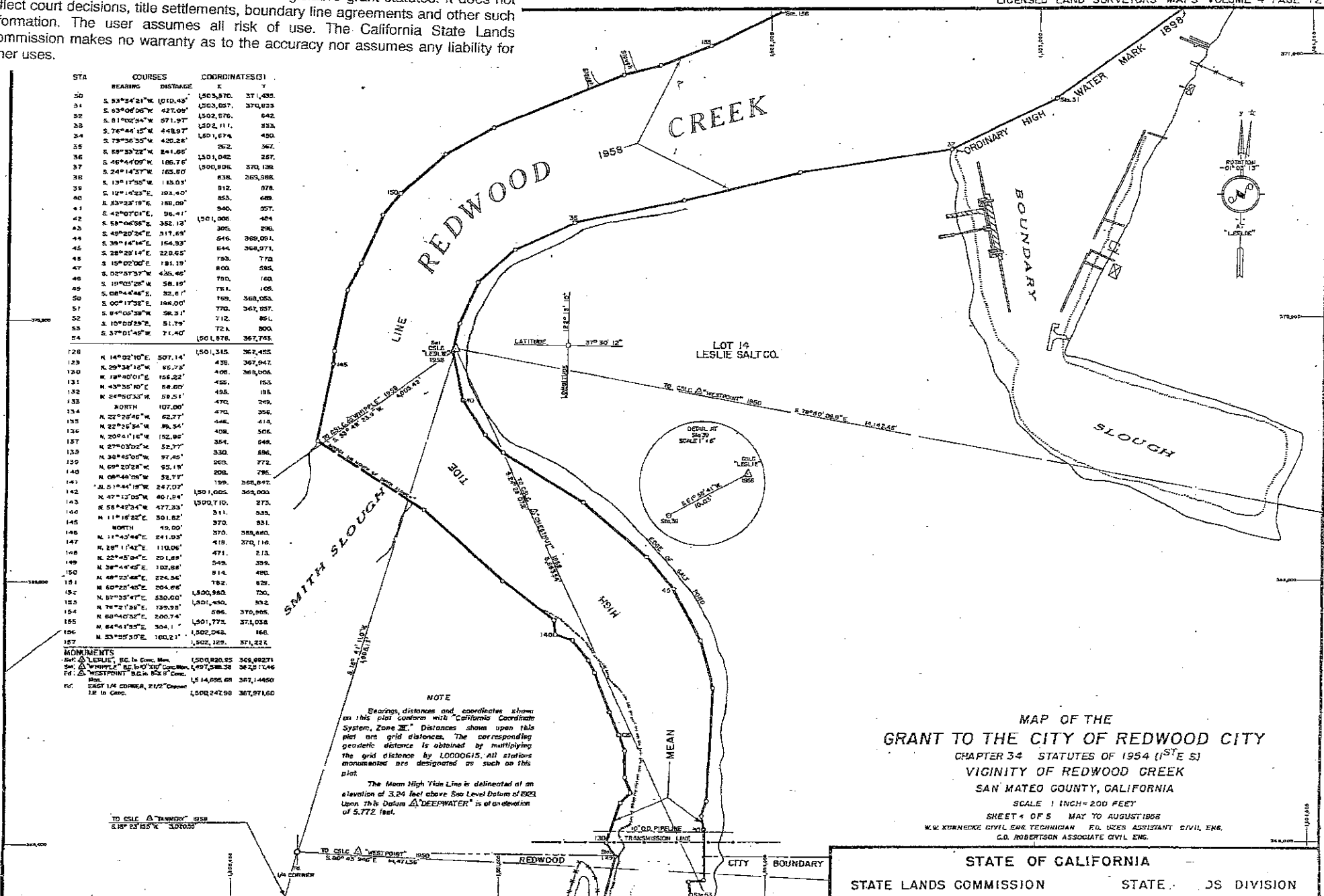
Disclaimer of Liability

This exhibit does not purport to show the grant boundaries accurately. Therefore, while it may be helpful for general grant administration purposes, the true boundaries may not be those depicted. This exhibit does not replace the grant description contained in the California State legislative grant statutes. It does not reflect court decisions, title settlements, boundary line agreements and other such information. The user assumes all risk of use. The California State Lands Commission makes no warranty as to the accuracy nor assumes any liability for other uses.

STA	COURSES	COORDINATES(S)
BEARING	DISTANCE	X Y
30	S 53°24'21"W 1010.43'	1505,870. 371,433.
31	S 63°06'06"W 427.09'	1503,657. 370,823.
32	S 81°00'34"W 671.97'	1502,576. 642.
33	S 78°44'15"W 448.97'	1502,111. 323.
34	S 78°36'55"W 420.28'	1501,674. 430.
35	S 69°33'22"W 841.86'	262. 367.
36	S 46°44'09"W 186.76'	1501,042. 267.
37	S 24°14'37"W 163.60'	1500,806. 373,108.
38	S 13°17'50"W 13.05'	638. 263,588.
39	S 12°14'23"E 193.40'	812. 878.
40	N 33°33'19"E 186.00'	853. 649.
41	E 48°07'01"E 36.91'	840. 507.
42	S 58°06'55"E 352.10'	1501,006. 404.
43	S 49°20'34"E 317.64'	305. 296.
44	S 39°14'14"E 154.33'	546. 369,001.
45	S 28°25'14"E 228.65'	644. 364,071.
46	S 15°02'00"E 181.19'	753. 770.
47	S 02°37'37"W 435.46'	802. 656.
48	S 19°03'26"W 58.19'	770. 100.
49	S 08°44'46"E 32.61'	784. 106.
50	S 00°17'32"E 196.00'	789. 368,052.
51	S 8°40'38"W 56.31'	770. 367,137.
52	S 10°02'59"E 51.79'	712. 851.
53	S 37°01'49"W 71.40'	724. 800.
54		1501,876. 367,743.
128	N 14°02'10"E 507.14'	1501,315. 362,455.
129	N 29°38'18"W 65.72'	428. 367,047.
130	N 18°40'01"E 156.22'	428. 368,004.
131	N 43°36'10"E 66.00'	455. 153.
132	N 24°03'37"W 59.51'	455. 153.
133	NORTH 107.00'	470. 349.
134	N 22°28'46"W 62.77'	470. 356.
135	N 22°26'34"W 56.54'	446. 414.
136	N 20°41'10"W 152.86'	408. 506.
137	N 27°03'02"W 52.77'	354. 646.
138	N 30°45'00"W 97.45'	330. 636.
139	N 69°20'28"W 52.19'	263. 772.
140	N 09°49'09"W 52.72'	208. 795.
141	N 51°44'19"W 247.07'	150,1005. 369,000.
142	N 47°12'00"W 401.84'	1500,710. 273.
143	E 58°42'34"W 477.33'	1500,710. 273.
144	N 11°16'22"E 301.82'	370. 831.
145	NORTH 49.00'	370. 368,680.
146	N 11°40'44"E 241.05'	418. 370,116.
147	N 28°17'42"E 110.06'	471. 213.
148	N 22°45'00"E 33.18'	549. 359.
149	N 38°44'45"E 102.68'	814. 490.
150	N 48°23'44"E 224.56'	782. 829.
151	N 60°22'45"E 204.66'	1,500,980. 750.
152	N 67°35'47"E 330.00'	1,501,450. 832.
153	N 76°21'39"E 139.93'	696. 370,905.
154	N 68°40'32"E 200.74'	1,501,775. 371,038.
155	N 64°41'35"E 304.11'	1,502,045. 166.
156	N 53°55'07"E 100.21'	1,502,129. 371,221.
157		

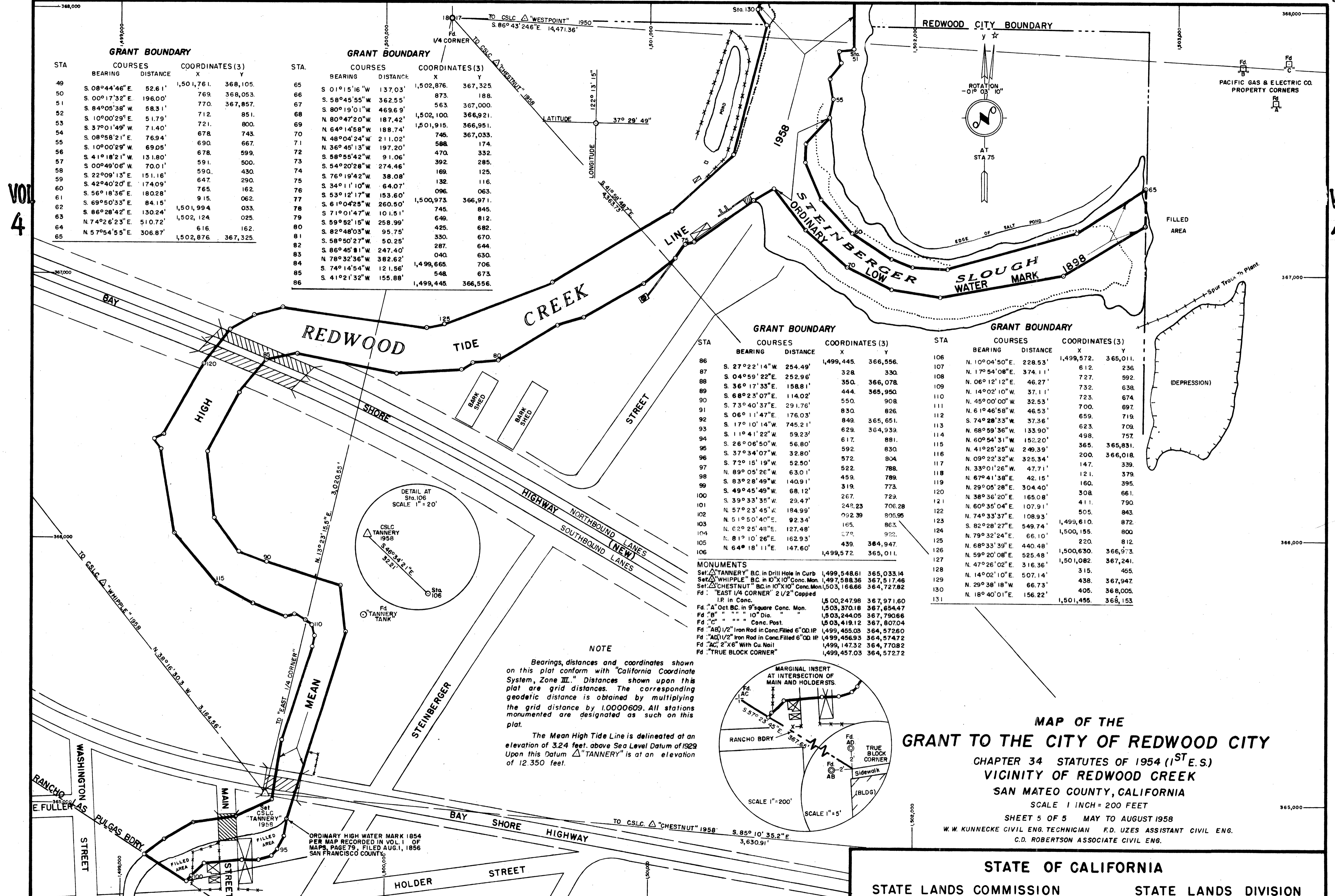
**MONUMENTS**  
 347' Δ LESLIE, 80' In Conc. Mem. 1500,820.55 369,882.71  
 34' Δ WESTPOINT, 80' In Conc. Mem. 1497,388.38 367,212.46  
 80' Δ WESTPOINT, 80' In Conc. Mem. 1514,685.68 367,144.50  
 12' In Conc. 1502,242.98 367,971.60

**NOTE**  
 Bearings, distances and coordinates shown on this plat conform with California Coordinate System, Zone III. Distances shown upon this plat are grid distances. The corresponding geodetic distance is obtained by multiplying the grid distance by 1.0000615. All stations monumented are designated as such on this plat.  
 The Mean High Tide Line is delineated at an elevation of 3.24 feet above Sea Level Datum of 1929. Upon this Datum Δ DEEWATER is at an elevation of 5.772 feet.



**MAP OF THE  
 GRANT TO THE CITY OF REDWOOD CITY**  
 CHAPTER 34 STATUTES OF 1954 (1<sup>ST</sup> S)  
 VICINITY OF REDWOOD CREEK  
 SAN MATEO COUNTY, CALIFORNIA  
 SCALE 1 INCH = 200 FEET  
 SHEET 4 OF 5 MAY TO AUGUST 1955  
 W.W. KORNBECK CIVIL ENG. TECHNICIAN F.D. UZZE ASSISTANT CIVIL ENG.  
 G.D. ROBERTSON ASSOCIATE CIVIL ENG.

**STATE OF CALIFORNIA**  
**STATE LANDS COMMISSION** STATE JS DIVISION



**GRANT BOUNDARY**

STA	BEARING	COURSES	DISTANCE	COORDINATES (3)	
				X	Y
49	S. 08°44'46" E.		52.61'	1,501,761.	368,105.
50	S. 00°17'32" E.		196.00'	769.	368,053.
51	S. 84°05'38" W.		58.31'	770.	367,857.
52	S. 10°00'29" E.		51.79'	712.	851.
53	S. 37°01'49" W.		71.40'	721.	800.
54	S. 08°58'21" E.		76.94'	678.	743.
55	S. 10°00'29" W.		69.05'	690.	667.
56	S. 41°18'21" W.		13.180'	678.	599.
57	S. 00°49'06" W.		70.01'	591.	500.
58	S. 22°09'13" E.		151.16'	590.	430.
59	S. 42°40'20" E.		174.09'	647.	290.
60	S. 56°18'36" E.		180.28'	765.	162.
61	S. 69°50'33" E.		84.15'	915.	062.
62	S. 86°28'42" E.		130.24'	1,501,994.	033.
63	N. 74°26'23" E.		510.72'	1,502,124.	025.
64	N. 57°54'55" E.		306.87'	616.	162.
65				1,502,876.	367,325.

**GRANT BOUNDARY**

STA	BEARING	COURSES	DISTANCE	COORDINATES (3)	
				X	Y
65	S. 01°15'16" W.		137.03'	1,502,876.	367,325.
66	S. 58°45'55" W.		362.55'	873.	188.
67	S. 80°19'01" W.		469.69'	563.	367,000.
68	N. 80°47'20" W.		187.42'	1,502,100.	366,921.
69	N. 64°14'58" W.		188.74'	1,501,915.	366,951.
70	N. 48°04'24" W.		211.02'	748.	367,033.
71	N. 36°45'13" W.		197.20'	588.	174.
72	S. 58°55'42" W.		91.06'	470.	332.
73	S. 54°20'28" W.		274.46'	392.	285.
74	S. 76°19'42" W.		38.08'	169.	125.
75	S. 34°11'10" W.		64.07'	132.	116.
76	S. 53°12'17" W.		153.60'	096.	063.
77	S. 61°04'25" W.		260.50'	1,500,973.	366,971.
78	S. 71°01'47" W.		101.51'	745.	845.
79	S. 59°52'15" W.		258.99'	649.	812.
80	S. 82°48'03" W.		95.75'	425.	682.
81	S. 58°50'27" W.		50.25'	330.	670.
82	S. 86°45'81" W.		247.40'	287.	644.
83	N. 78°32'36" W.		382.62'	040.	630.
84	S. 74°14'54" W.		121.56'	1,499,665.	706.
85	S. 41°21'32" W.		155.88'	548.	673.
86				1,499,445.	366,556.

**GRANT BOUNDARY**

STA	BEARING	COURSES	DISTANCE	COORDINATES (3)	
				X	Y
86	S. 27°22'14" W.		254.49'	1,499,445.	366,556.
87	S. 04°59'22" E.		252.96'	328.	330.
88	S. 36°17'33" E.		158.81'	350.	366,078.
89	S. 68°23'07" E.		114.02'	444.	365,950.
90	S. 73°40'37" E.		291.76'	550.	908.
91	S. 06°11'47" E.		176.03'	830.	826.
92	S. 17°10'14" W.		745.21'	849.	365,651.
93	S. 11°41'22" W.		59.23'	629.	364,939.
94	S. 26°06'50" W.		56.80'	617.	881.
95	S. 37°34'07" W.		32.80'	592.	830.
96	S. 72°15'19" W.		52.50'	572.	804.
97	N. 89°05'26" W.		63.01'	522.	788.
98	S. 83°28'49" W.		140.91'	459.	789.
99	S. 49°45'49" W.		68.12'	319.	773.
100	S. 39°33'35" W.		29.47'	267.	729.
101	N. 57°23'45" W.		184.99'	248.23	706.28
102	N. 51°50'40" E.		92.34'	092.39	805.95
103	N. 82°25'48" E.		127.48'	165.	863.
104	N. 81°10'26" E.		162.93'	079.	922.
105	N. 64°18'11" E.		147.60'	439.	364,947.
106				1,499,572.	365,011.

**GRANT BOUNDARY**

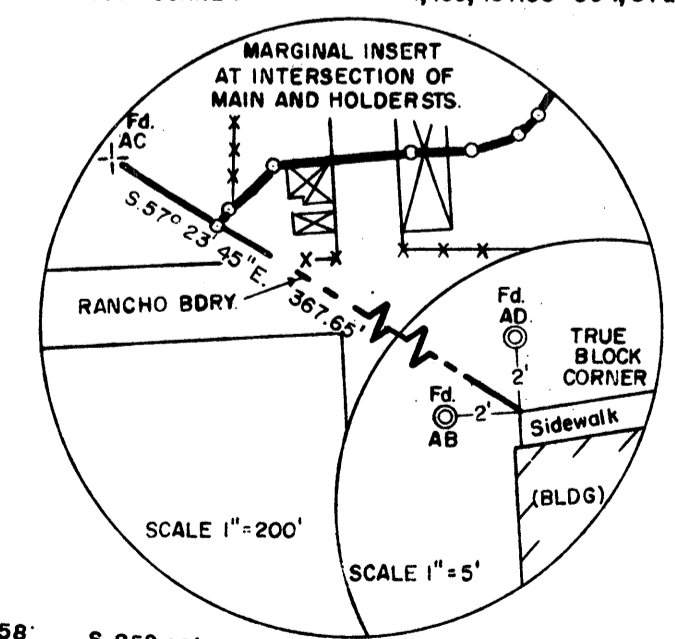
STA	BEARING	COURSES	DISTANCE	COORDINATES (3)	
				X	Y
106	N. 10°04'50" E.		228.53'	1,499,572.	365,011.
107	N. 17°54'08" E.		374.11'	612.	236.
108	N. 06°12'12" E.		46.27'	727.	592.
109	N. 14°02'10" W.		37.11'	732.	638.
110	N. 45°00'00" W.		32.53'	723.	674.
111	N. 61°46'58" W.		46.53'	700.	697.
112	S. 74°28'33" W.		37.36'	659.	719.
113	N. 68°59'36" W.		133.90'	623.	709.
114	N. 60°54'31" W.		152.20'	498.	757.
115	N. 41°25'25" W.		249.39'	365.	365,831.
116	N. 09°22'32" W.		325.34'	200.	366,018.
117	N. 33°01'26" W.		47.71'	147.	339.
118	N. 67°41'38" E.		42.15'	121.	379.
119	N. 29°05'28" E.		304.40'	160.	395.
120	N. 38°36'20" E.		165.08'	308.	661.
121	N. 60°35'04" E.		107.91'	411.	790.
122	N. 74°33'37" E.		108.93'	505.	843.
123	S. 82°28'27" E.		549.74'	1,499,610.	872.
124	N. 79°32'24" E.		66.10'	1,500,155.	800.
125	N. 68°33'39" E.		440.48'	220.	812.
126	N. 59°20'08" E.		525.48'	1,500,630.	366,973.
127	N. 47°26'02" E.		316.36'	1,501,082.	367,241.
128	N. 14°02'10" E.		507.14'	315.	455.
129	N. 29°38'18" W.		66.73'	438.	367,947.
130	N. 18°40'01" E.		156.22'	405.	368,005.
131				1,501,455.	366,153.

- MONUMENTS**
- Set: "TANNERY" B.C. in Drill Hole in Curb 1,499,548.61 365,033.14
  - Set: "WHIPPLE" B.C. in 10"x10" Conc. Mon. 1,497,588.36 367,517.46
  - Set: "CHESTNUT" B.C. in 10"x10" Conc. Mon. 1,503,166.66 364,727.82
  - Fd: "EAST 1/4 CORNER" 2 1/2" Capped I.P. in Conc. 1,500,247.98 367,971.60
  - Fd: "A" Oct. BC in 9" square Conc. Mon. 1,503,370.18 367,854.47
  - Fd: "B" " " " 10" Dia. 1,503,244.05 367,790.66
  - Fd: "C" " " " Conc. Post. 1,503,419.12 367,807.04
  - Fd: "AB" 1/2" Iron Rod in Conc. Filled 6" OD IP. 1,499,455.03 364,572.60
  - Fd: "AD" 1/2" Iron Rod in Conc. Filled 6" OD IP. 1,499,456.93 364,574.72
  - Fd: "AC" 2"x6" With Cu. Nail 1,499,147.32 364,770.82
  - Fd: "TRUE BLOCK CORNER" 1,499,457.03 364,572.72

**NOTE**

Bearings, distances and coordinates shown on this plat conform with California Coordinate System, Zone III. Distances shown upon this plat are grid distances. The corresponding geodetic distance is obtained by multiplying the grid distance by 1.0000609. All stations monumented are designated as such on this plat.

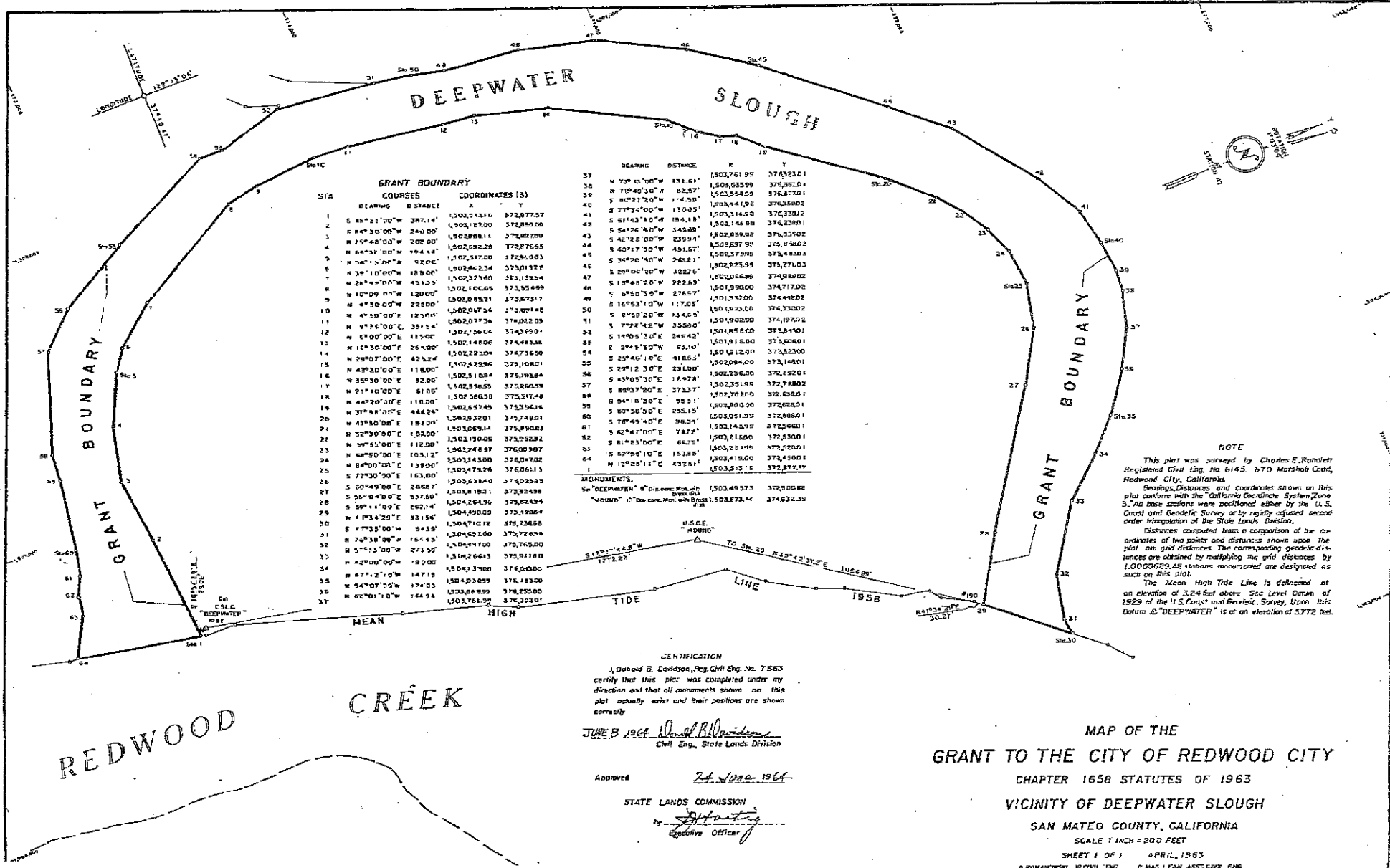
The Mean High Tide Line is delineated at an elevation of 3.24 feet above Sea Level Datum of 1929. Upon this Datum "TANNERY" is at an elevation of 12350 feet.



**MAP OF THE GRANT TO THE CITY OF REDWOOD CITY**  
 CHAPTER 34 STATUTES OF 1954 (1<sup>ST</sup> E.S.)  
 VICINITY OF REDWOOD CREEK  
 SAN MATEO COUNTY, CALIFORNIA  
 SCALE 1 INCH = 200 FEET

SHEET 5 OF 5 MAY TO AUGUST 1958  
 W.W. KUNNECKE CIVIL ENG. TECHNICIAN F.D. UZES ASSISTANT CIVIL ENG.  
 C.D. ROBERTSON ASSOCIATE CIVIL ENG.

**STATE OF CALIFORNIA**  
**STATE LANDS COMMISSION**      **STATE LANDS DIVISION**



**NOTE**

This plat was surveyed by Charles E. Randlett Registered Civil Eng. No. 6145, 670 Marshall Court, Redwood City, California.

Bearings, Distances and coordinates shown on this plat conform with the California Coordinate System, Zone 3, All base stations were positioned either by the U.S. Coast and Geodetic Survey or by rigidly adjusted second order triangulation of the State Lands Division.

Distances computed from a comparison of the coordinates of two points and distances shown upon the plat one grid distance. The corresponding geodesic distances are obtained by multiplying the grid distances by 1.000029. All stations monumented are designated as such on this plat.

The Mean High Tide Line is delineated at an elevation of 3.24 feet above Sea Level Datum of 1929 of the U.S. Coast and Geodetic Survey. Upon this datum "DEEPCREEK" is at an elevation of 3772 feet.

**CERTIFICATION**

I, Donald B. Davidson, Reg. Civil Eng. No. 7563 certify that this plat was completed under my direction and that all monuments shown on this plat actually exist and their positions are shown correctly.

JUNE 8 1964 *Donald B. Davidson*  
Civil Eng., State Lands Division

Approved *R. J. Lugo* 1964

STATE LANDS COMMISSION  
by *[Signature]*  
Executive Officer

MAP OF THE  
**GRANT TO THE CITY OF REDWOOD CITY**  
CHAPTER 1658 STATUTES OF 1963  
VICINITY OF DEEPCREEK SLOUGH  
SAN MATEO COUNTY, CALIFORNIA  
SCALE 1 INCH = 200 FEET  
SHEET 1 OF 1 APRIL, 1963  
B. ROMANOWSKI, JR. CIVIL ENG. R. MAC LEAN, ASSIST. CIVIL ENG.  
C. L. ROBERTSON, ASSOCIATE CIVIL ENG.

Disclaimer of Liability

This exhibit does not purport to show the grant boundaries accurately. Therefore, while it may be helpful for general grant administration purposes, the true boundaries may not be those depicted. This exhibit does not replace the grant description contained in the California State legislative grant statutes. It does not reflect court decisions, title settlements, boundary line agreements and other such information. The user assumes all risk of use. The California State Lands Commission makes no warranty as to the accuracy nor assumes any liability for other uses.

STATE OF CALIFORNIA  
STATE LANDS COMMISSION STATE LANDS DIVISION

Disclaimer of Liability

This exhibit does not purport to show the grant boundaries accurately. Therefore, while it may be helpful for general grant administration purposes, the true boundaries may not be those depicted. This exhibit does not replace the grant description contained in the California State legislative grant statutes. It does not reflect court decisions, title settlements, boundary line agreements and other such information. The user assumes all risk of use. The California State Lands Commission makes no warranty as to the accuracy nor assumes any liability for other uses.

