

HOW TO FIND A POTENTIAL LEAK



Leak Detection Checklist:

Toilets



These silent leaks go undetected due to the lack of noticeable water leakage. Use color dye or leak detector dye tablets to determine if the toilet is running. Contact Public Works at 650-780-7464 if you would like to receive some dye tablets.

Faucets

Look for faucets or hose bibs with a continuous drip or trickle of water.



Irrigation system



Look for:

- Noisy valves when irrigation system is off.
- Ponding around sprinkler heads and valves.
- Drip and other irrigation systems that have been left on overnight.
- Sprinkler heads that continuously leak/flow indicating a malfunctioning irrigation valve.

Swimming pool and water features

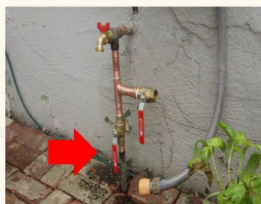
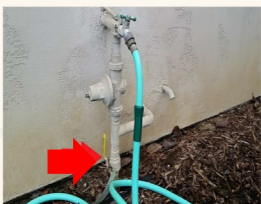
- Malfunctioning equipment (esp. autofill and float valve)
- Broken lines

Toilets and irrigation systems are the most common leak found.

Unable To Find The Leak?

1. Turn off your house valve

Your house valve is typically located below the hose bib in the front of the house.



2. Locate your water meter

Your meter is located below ground and usually near the street. The lid is labeled 'Water.' Use a screwdriver to lift up the lid.



3. Check the meter

Flow Indicator:

Look for movement on the meter leak indicator.

Digital



A plus sign (+) indicates that water is flowing through meter

Touch Read



If the red dial is moving, water is flowing through meter

Direct Read



If the triangle rotates, water is flowing through meter

Meter Reading:

If the last two digits at the far right stop moving, then the leak is coming from inside the house, or irrigation connected after the valve.

If the digits continue to increase, it's most likely that the leak is in your water service line, between the meter and the house valve. If your irrigation system is connected before the house valve it could also be an irrigation leak. For further guidance, call us at (650) 780-7436.

Street/Curb Side



Private Property Side

Customers are responsible for repairing leaks on their private property.